

| | | | |
|--|------------------------|-----------------------------|---|
| WAAS CH 45632 W24A | APP CRS 240° | Rwy Idg TDZE Apt Elev | 4601 2573 2573 |
|--|------------------------|-----------------------------|---|

RNAV (GPS) RWY 24

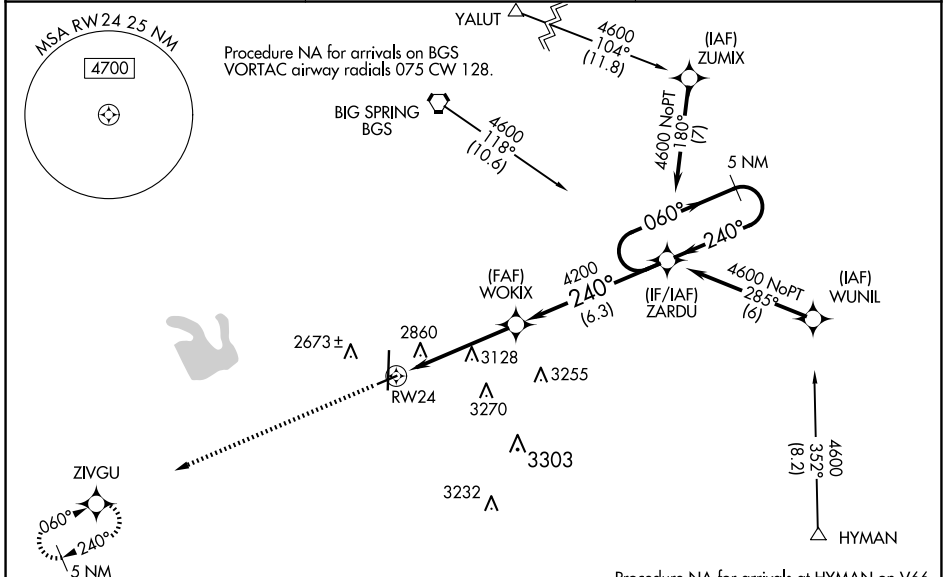
BIG SPRING/MC MAHON-WRINKLE (BPG)

RNP APCH.

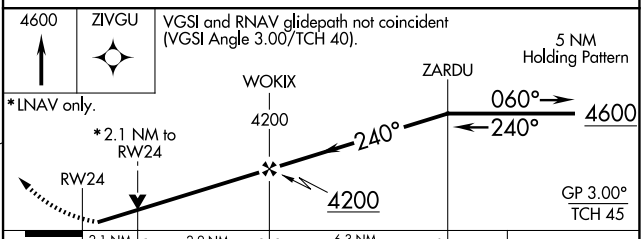
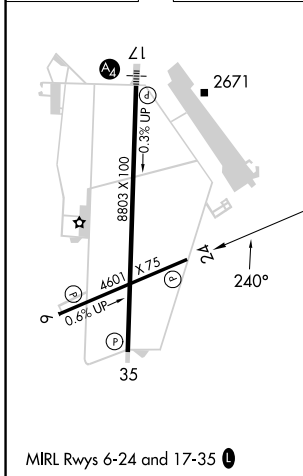
⚠ For uncompensated Baro-VNAV systems, LNAV/VNAV NA below -20°C or above 54°C. When local altimeter setting not received, use Midland Intl Air and Space Port altimeter setting: increase all DA 130 feet and all MDA 140 feet; increase LPV and LNAV/VNAV Cats A/B visibility ½ SM, and LNAV Cat A visibility ¼ SM. Baro-VNAV and VDP NA with Midland Intl Air and Space Port altimeter setting. Rwy 24 helicopter visibility reduction below ¾ SM NA.

MISSED APPROACH: Climb to 4600 direct ZIVGU and hold.

| | | |
|----------------------------|---|---------------------------------|
| AWOS-3PT 118.025 | FORT WORTH CENTER 133.7 350.2 | UNICOM 122.8 (CTAF) 0 |
|----------------------------|---|---------------------------------|



| | |
|-----------|-----------|
| ELEV 2573 | TDZE 2573 |
|-----------|-----------|



| CATEGORY | A | B | C | D |
|--------------|-----------------------|-------------------------|---|----|
| LPV DA | 2823-¾ | 250 (300-¾) | | NA |
| LNAV/VNAV DA | 3236-2¼ | 663 (700-2¼) | | NA |
| LNAV MDA | 3380-1 807 (900-1) | 3380-1¼ 807 (900-1¼) | | NA |

SC-2, 17 APR 2025 to 15 MAY 2025

SC-2, 17 APR 2025 to 15 MAY 2025