

NDB-A

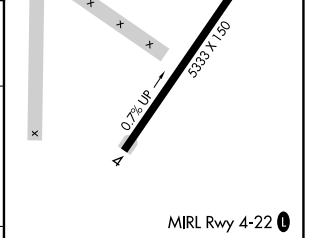
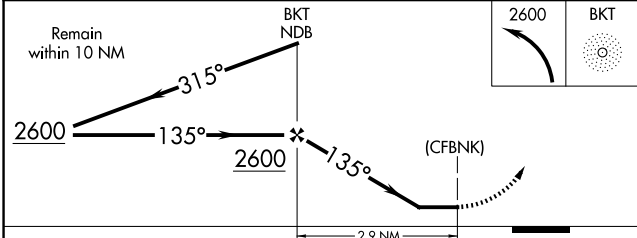
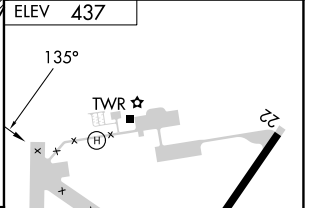
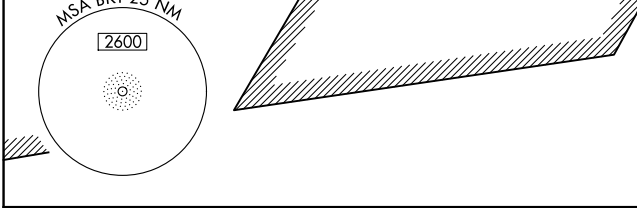
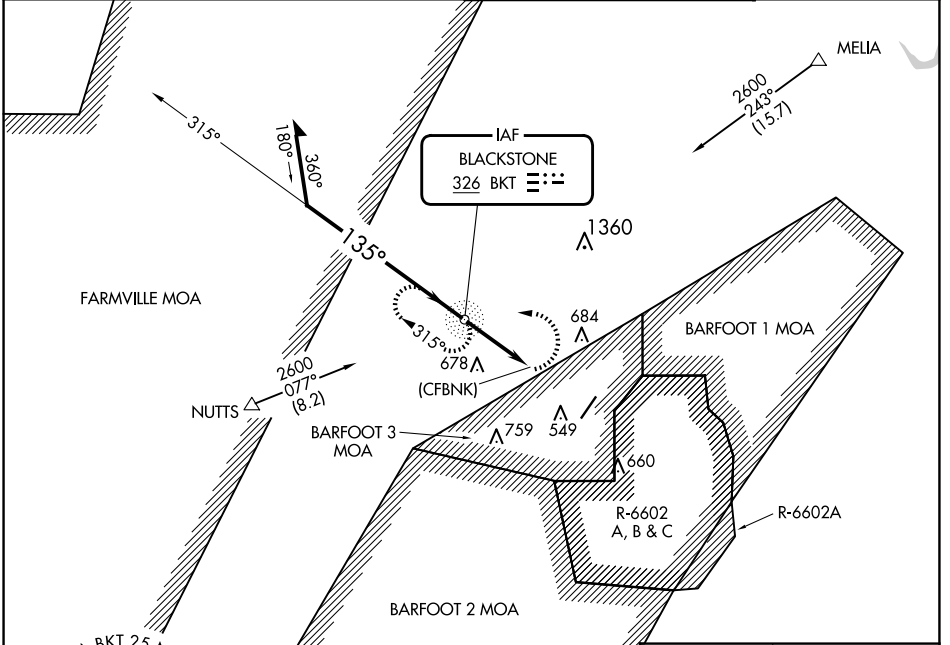
ALLAN C PERKINSON/BLACKSTONE AAF (BKT)

NDB BKT 326	APP CRS 135°	Rwy Idg TDZE Apt Elev	N/A N/A 437
-----------------------	------------------------	-----------------------------	--

⚠ Circling NA east of Rwy 4-22.

MISSED APPROACH: Climbing left turn to 2600 direct BKT NDB and hold, continue climb-in-hold to 2600.

ATIS 119.225	WASHINGTON CENTER 118.75 377.1	BLACKSTONE TOWER★ 134.7 (CTAF) 292.7	GND CON 127.625
------------------------	--	--	---------------------------



CATEGORY	A			B		C		D		FAF to MAP 2.9 NM					
	980-3	543	(600-3)	1000-3	563	(600-3)	NA	Knots	60	90	120	150	180		
C CIRCLING										Min:Sec	2:54	1:56	1:27	1:10	0:58

NDB-A

NE-3, 17 APR 2025 to 15 MAY 2025

NE-3, 17 APR 2025 to 15 MAY 2025