

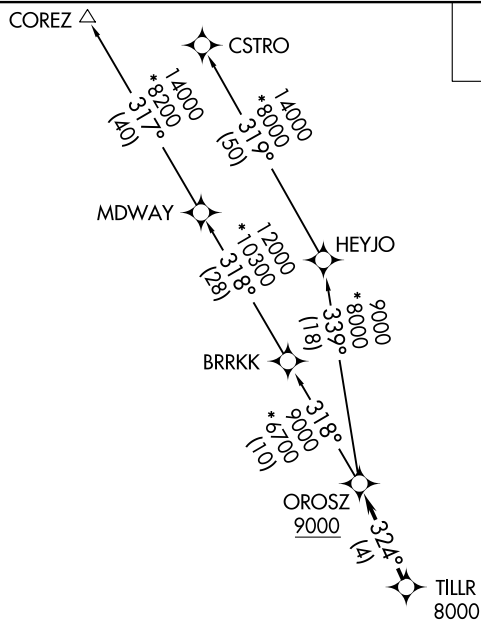
OROSZ TWO DEPARTURE (RNAV)

AL-67 (FAA)

BOB HOPE (BUR)
BURBANK, CALIFORNIA

CLNC DEL
118.0 348.6
CPDLC
SOCAL DEP CON
124.6 298.85

TOP ALTITUDE:
FL230

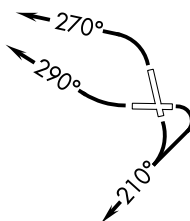


NOTE: DME/DME/IRU or GPS required.
NOTE: RNAV 1.
NOTE: RADAR required.
NOTE: Maintain at or below 250K unless
otherwise directed by ATC.

TAKEOFF MINIMUMS

Rwy 8: Standard with minimum climb of 420' per NM to 2500.
Rwy 15: Standard with minimum climb of 340' per NM to 2100.
Rwy 26: Standard with minimum climb of 380' per NM to 4800.
Rwy 33: Standard with minimum climb of 460' per NM to 4900.

NOTE: Chart not to scale.



DEPARTURE ROUTE DESCRIPTION

TAKEOFF RUNWAYS 8, 15: Climbing right turn heading 210° or as assigned by ATC, expect vectors to cross TILLR at or above 8000, then on track 324° to cross OROSZ at or above 9000, thence. . .

TAKEOFF RUNWAY 26: Climbing right turn heading 290° or as assigned by ATC, expect vectors to cross TILLR at or above 8000, then on track 324° to cross OROSZ at or above 9000, thence. . .

TAKEOFF RUNWAY 33: Climbing left turn heading 270° or as assigned by ATC, expect vectors to cross TILLR at or above 8000, then on track 324° to cross OROSZ at or above 9000, thence. .

...on (transition) maintain FL230. Expect filed altitude 10 minutes after departure.

COREZ TRANSITION (OROSZ2.COREZ)

CSTRO TRANSITION (OROSZ2.CSTRO)

OROSZ TWO DEPARTURE (RNAV)
(OROSZ2.OROSZ) 01FEB18

BURBANK, CALIFORNIA
BOB HOPE (BUR)

SW-3, 17 APR 2025 to 15 MAY 2025

SW-3, 17 APR 2025 to 15 MAY 2025