

HI-VOR Z or TACAN Z RWY 15

VORTAC CHS 113.5 Chan 82	APCH CRS 157°	Rwy Idg TDZE Arpt Elev 9001 43 46
----------------------------------------------	-------------------------	-----------------------------------------------------------------------

[USAF]

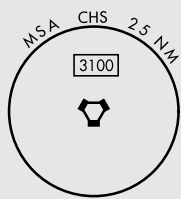
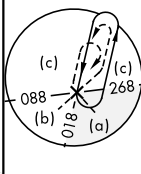
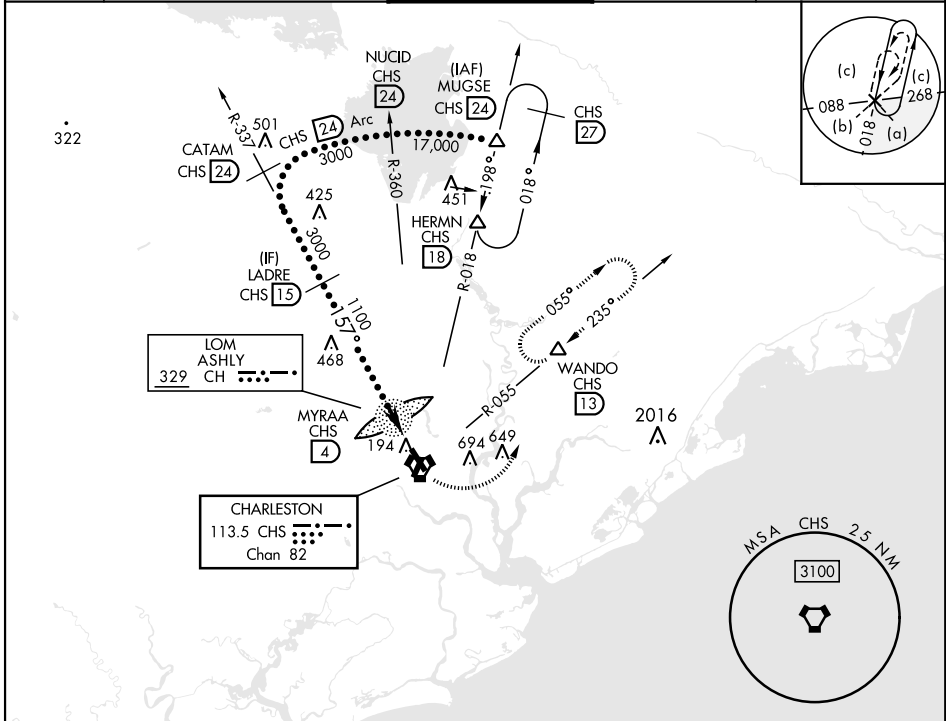
CHARLESTON AFB/INTL (KCHS)

DME required
 * When ALS inop, increase CAT CDE RVR to 60, vis to 1 1/8 miles.



MISSED APPROACH: Climb to 500 then climbing left turn to 3500 on CHS VORTAC R-055 to WANDO/CHS 13 DME and hold, continue climb-in-hold to 3500.

ATIS 124.75	APP CON 120.7 306.925 (151° - 330°) 121.275 379.925 (331° - 150°)	TOWER 126.0 239.0	GND CON 121.9 348.6	CLNC DEL 127.325 291.65
-----------------------	---------------------------------------------------------------------------------------	-----------------------------	-------------------------------	-----------------------------------

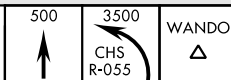


SE-2, 17 APR 2025 to 15 MAY 2025

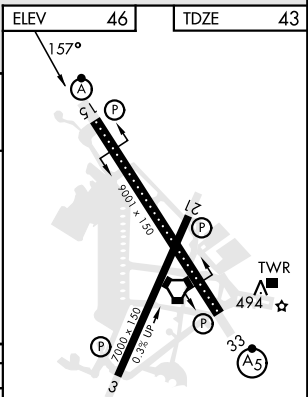
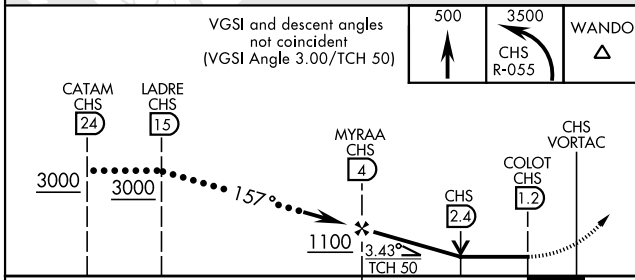
SE-2, 17 APR 2025 to 15 MAY 2025

EMERG SAFE ALT 100 NM 3200

VGSI and descent angles not coincident (VGSI Angle 3.00/TCH 50)



ELEV	46	TDZE	43
------	----	------	----



CATEGORY	C	D	E
S-15*	460/40	417	(500-3)
CIRCLING	540-1 1/2 494 (500-1 1/2)	740-2 1/4 694 (700-2 1/4)	740-2 1/2 694 (700-2 1/2)

HIRL all rwys
 REIL Rwys 3 and 21
 TDZL/CL Rwy 15

HI-VOR Z or TACAN Z RWY 15