

WAAS CH <b>45620</b> <b>W31A</b>	APP CRS <b>319°</b>	Rwy Idg TDZE Apt Elev	<b>5001</b> <b>42</b> <b>42</b>
--	------------------------	-----------------------------	---------------------------------------

# RNAV (GPS) RWY 31

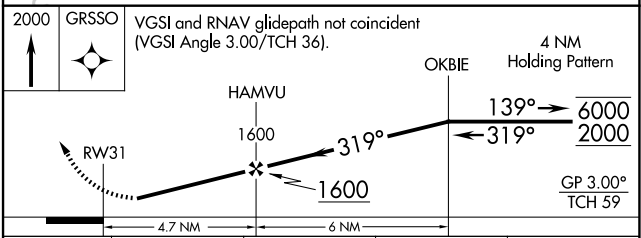
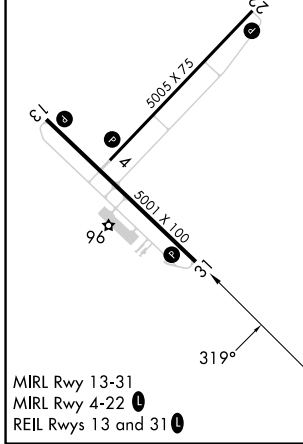
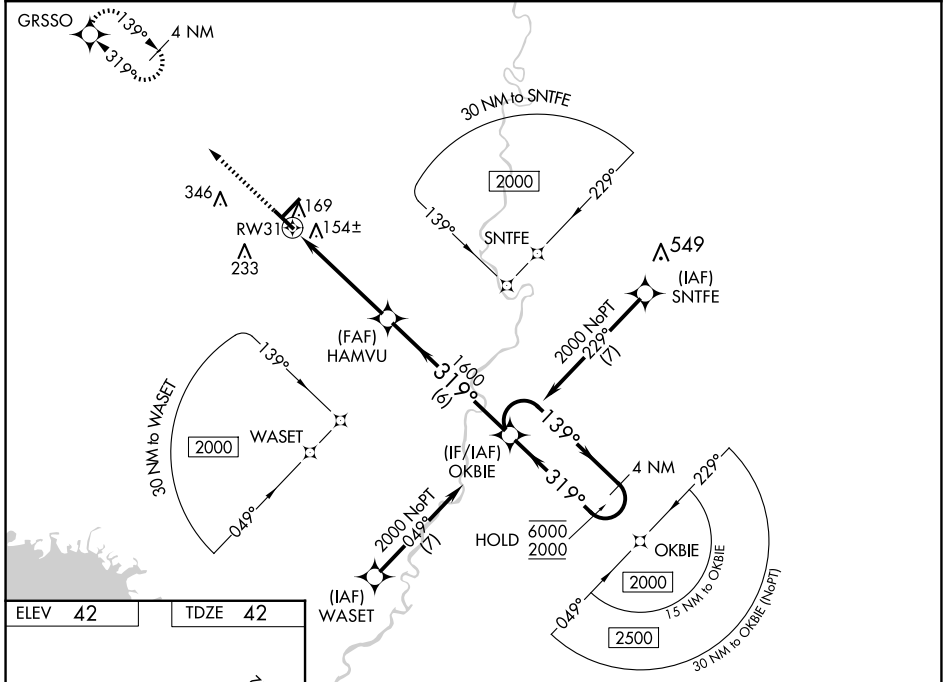
CROSS CITY (CTY)

RNP APCH - GPS.

**⚠** Rwy 31 helicopter visibility reduction below 1 SM NA. Baro-VNAV NA when using X60 altimeter setting. For uncompensated Baro-VNAV systems, LNAV/VNAV NA below 15°C or above 54°C. When local altimeter setting not received, use X60 altimeter setting and increase LPV DA to 383 feet; increase LNAV/VNAV DA to 514 feet and all visibilities ¼ SM. Increase all MDAs 100 feet and LNAV visibility Cats C and D ¼ SM, and Circling visibility Cats C and D ¼ SM. Straight-in Rwy 31 NA at night, Circling Rwy 4, 13, 31 NA at night.

**MISSED APPROACH:**  
Climb to 2000 direct GRSO and hold.

AWOS-3PT <b>120.775</b>	X60 AWOS-3T <b>118.425</b>	JACKSONVILLE CENTER <b>127.8 352.0</b>	UNICOM <b>122.8 (CTAF) 0</b>
----------------------------	-------------------------------	---	---------------------------------



CATEGORY	A	B	C	D
LPV DA		292-1	250 (300-1)	
LNAV/VNAV DA		423-1½	381 (400-1½)	
LNAV MDA	500-1	458 (500-1)	500-1¾	458 (500-1¾)
<b>C</b> CIRCLING	500-1 458 (500-1)	520-1 478 (500-1)	660-1¾ 618 (700-1¾)	660-2 618 (700-2)

SE-3, 17 APR 2025 to 15 MAY 2025

SE-3, 17 APR 2025 to 15 MAY 2025