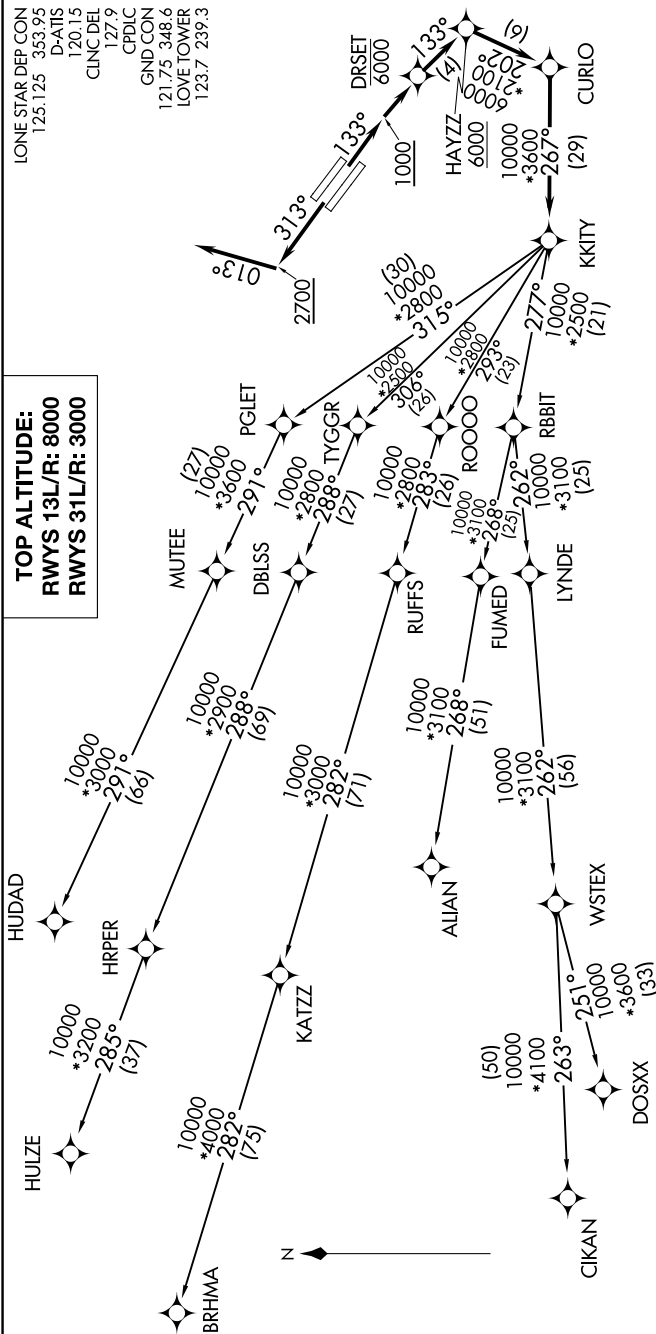


KKITY FIVE DEPARTURE (RNAV)

SC-2, 17 APR 2025 to 15 MAY 2025



LONE STAR DEP CON
125.125 353.95
D-ATIS
120.15
CLNCDEL
127.9
CPDIC
GND CON
121.75 348.6
LOVE TOWER
123.7 239.3

TAKEOFF MINIMUMS
RWys 13L/R: Standard with minimum climb of 500' per NM to 1200.
RWys 31L/R: Standard with minimum climb of 500' per NM to 1000.

- NOTE: RADAR required.
- NOTE: DME/DME/IRU or GPS required.
- NOTE: RNAV 1.
- NOTE: For use by turbojet aircraft only.
- NOTE: RNAV-capable props: File and expect the SWABR RNAV SID.
- NOTE: ALIAN Transition: ATC assigned only.
- NOTE: BRHMA Transition: For aircraft inbound to Lubbock terminal area.
- NOTE: Use WORTH DEPARTURE during the period 2100-0600 local time in lieu of the KKITY DEPARTURE.
- NOTE: WSTEX Transition: For aircraft inbound to Abilene and San Angelo terminal area airports only.

(NARRATIVE ON FOLLOWING PAGE)

NOTE: Chart not to scale.

KKITY FIVE DEPARTURE (RNAV)

SC-2, 17 APR 2025 to 15 MAY 2025