

KRUMM ONE DEPARTURE

LONE STAR DEP CON
118.55 290.35
D-ATIS
120.15
CLNC DEL
127.9
CPDLC
GND CON
121.75 348.6
LOVE TOWER
123.7 239.3

**TOP ALTITUDE:
5000**

NOTE: This DP is to be used only upon assignment by Love Tower normally between 2100-0600 LCL time.
NOTE: WILL ROGERS Transition: For all aircraft inbound to the Oklahoma City area or overflying IRW VORTAC.
NOTE: TULSA Transition: For all aircraft overflying TUL VORTAC.
NOTE: OKMULGEE Transition: For all aircraft overflying OKM VOR/DME proceeding on J181 BDF VORTAC proceeding to destinations in the Chicago Terminal area and north.

DME and RADAR required.

TULSA
114.4 TUL
Chan 91

OKMULGEE
114.9 OKM
Chan 96

WILL ROGERS
114.1 IRW
Chan 88

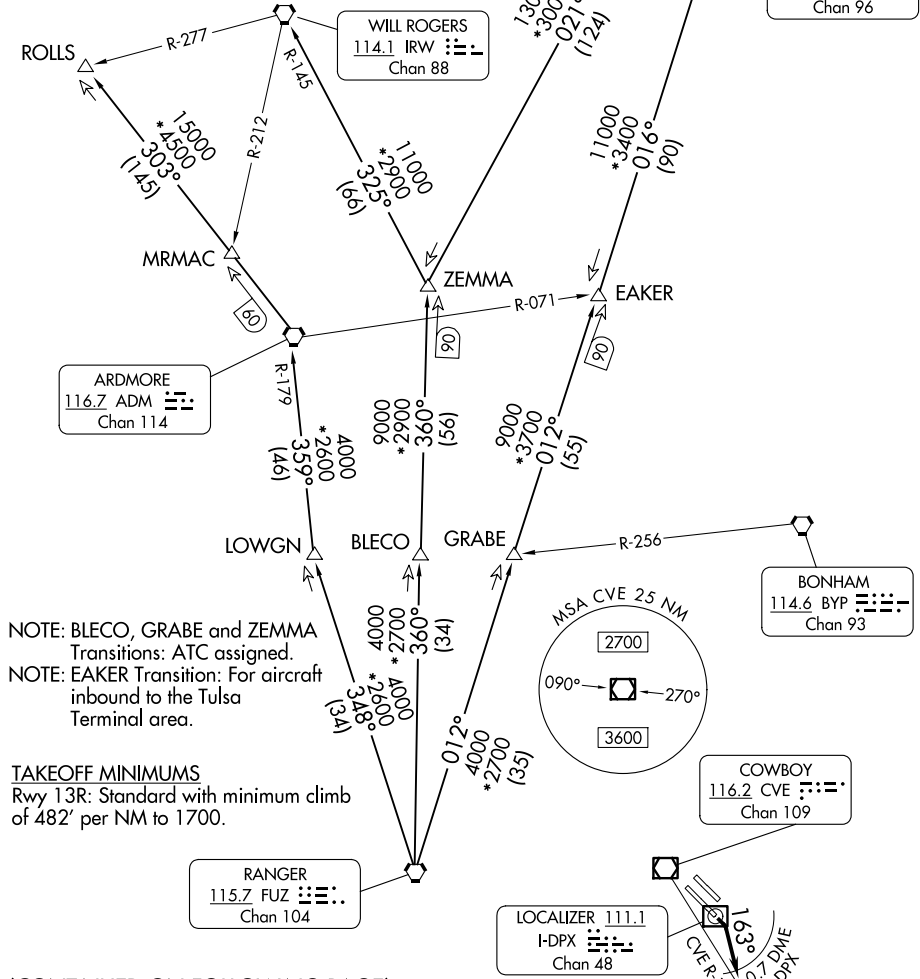
ARDMORE
116.7 ADM
Chan 114

BONNHAM
114.6 BYP
Chan 93

COWBOY
116.2 CVE
Chan 109

RANGER
115.7 FUZ
Chan 104

LOCALIZER 111.1
I-DPX
Chan 48



NOTE: BLECO, GRABE and ZEMMA Transitions: ATC assigned.
NOTE: EAKER Transition: For aircraft inbound to the Tulsa Terminal area.

TAKEOFF MINIMUMS
Rwy 13R: Standard with minimum climb of 482' per NM to 1700.

(CONTINUED ON FOLLOWING PAGE)

NOTE: Chart not to scale.

SC-2, 17 APR 2025 to 15 MAY 2025

SC-2, 17 APR 2025 to 15 MAY 2025

KRUMM ONE DEPARTURE