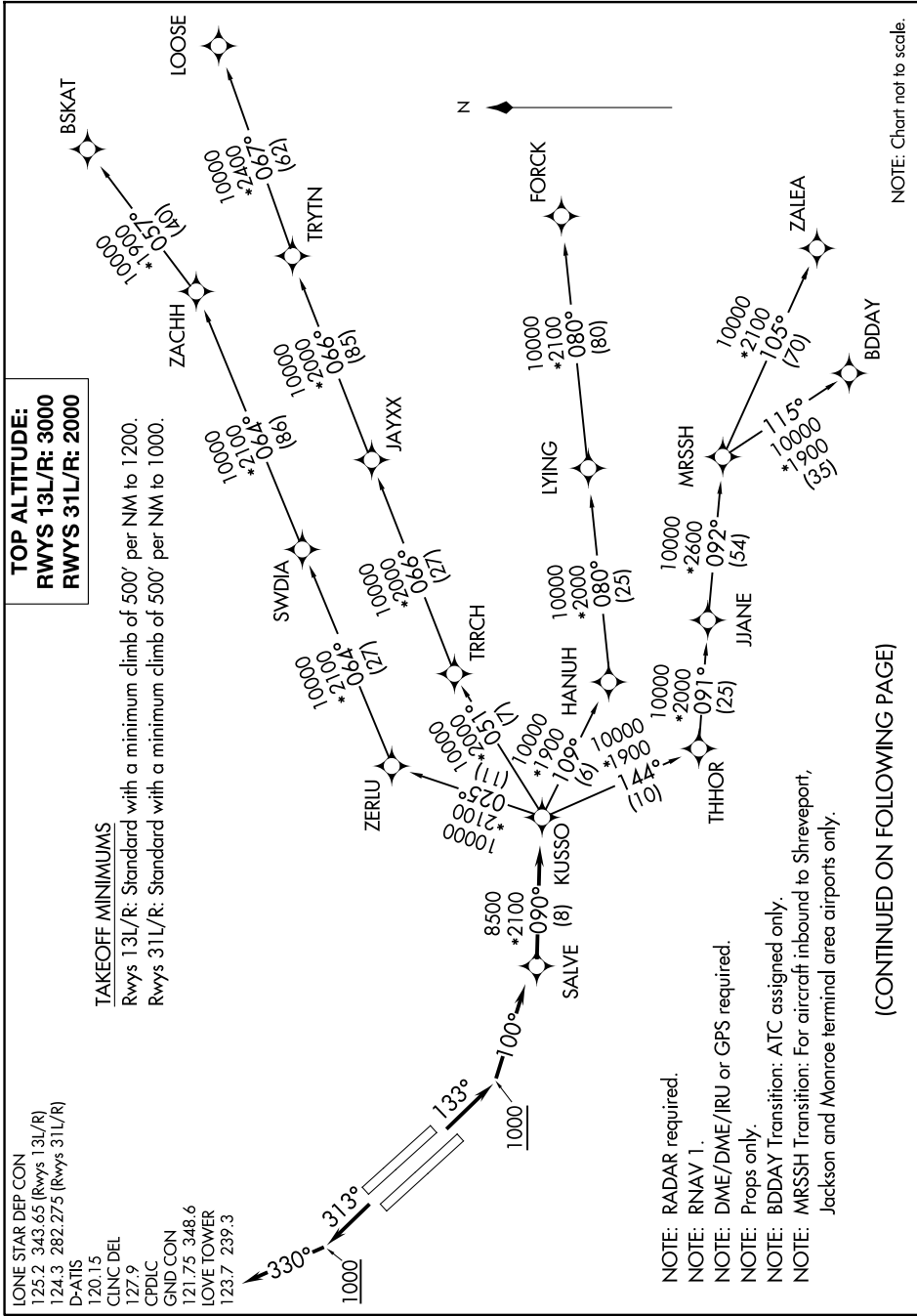


KUSSO ONE DEPARTURE (RNAV)

SC-2, 17 APR 2025 to 15 MAY 2025



TOP ALTITUDE:
RWYS 13L/R: 3000
RWYS 31L/R: 2000

TAKEOFF MINIMUMS
 Rwys 13L/R: Standard with a minimum climb of 500' per NM to 1200.
 Rwys 31L/R: Standard with a minimum climb of 500' per NM to 1000.

LONE STAR DEP CON
 125.2 343.65 (Rwys 13L/R)
 124.3 282.275 (Rwys 31L/R)
 D-ATIS
 120.15
 CLNC DEL
 127.9
 CPDLC
 GND CON
 121.75 348.6
 LOVE TOWER
 123.7 239.3

NOTE: RADAR required.
 NOTE: RNAV 1.
 NOTE: DME/DME/IRU or GPS required.
 NOTE: Props only.
 NOTE: BDDAY Transition: ATC assigned only.
 NOTE: MRSSH Transition: For aircraft inbound to Shreveport, Jackson and Monroe terminal area airports only.

(CONTINUED ON FOLLOWING PAGE)

NOTE: Chart not to scale.

KUSSO ONE DEPARTURE (RNAV)

SC-2, 17 APR 2025 to 15 MAY 2025