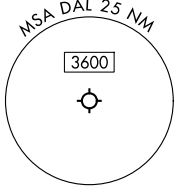


SWTSR SEVEN DEPARTURE (RNAV)

LONE STAR DEP CON
118.55 290.35
D-ATIS
120.15
CLNC DEL
127.9
CPDLC
GND CON
121.75 348.6
LOVE TOWER
123.7 239.3

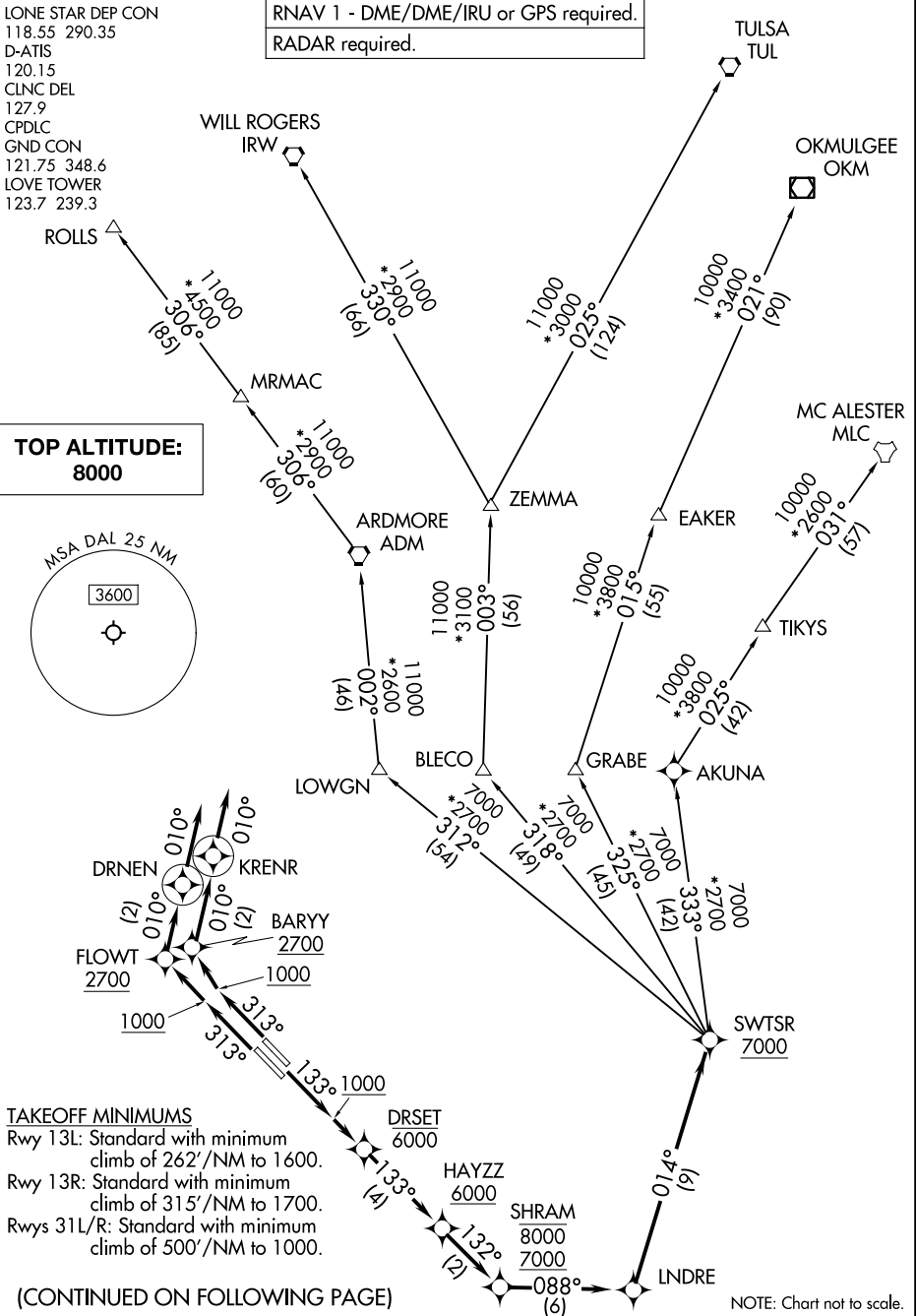
RNAV 1 - DME/DME/IRU or GPS required.
RADAR required.

**TOP ALTITUDE:
8000**



SC-2, 17 APR 2025 to 15 MAY 2025

SC-2, 17 APR 2025 to 15 MAY 2025



TAKEOFF MINIMUMS
 Rwy 13L: Standard with minimum climb of 262'/NM to 1600.
 Rwy 13R: Standard with minimum climb of 315'/NM to 1700.
 Rws 31L/R: Standard with minimum climb of 500'/NM to 1000.

(CONTINUED ON FOLLOWING PAGE)

NOTE: Chart not to scale.

SWTSR SEVEN DEPARTURE (RNAV)