

# VENUS FOUR DEPARTURE

LONE STAR DEP CON  
125.125 353.95  
D-ATIS  
120.15  
CLNC DEL  
127.9  
CPDLC  
GND CON  
121.75 348.6  
LOVE TOWER  
123.7 239.3

RADAR required. DME required.

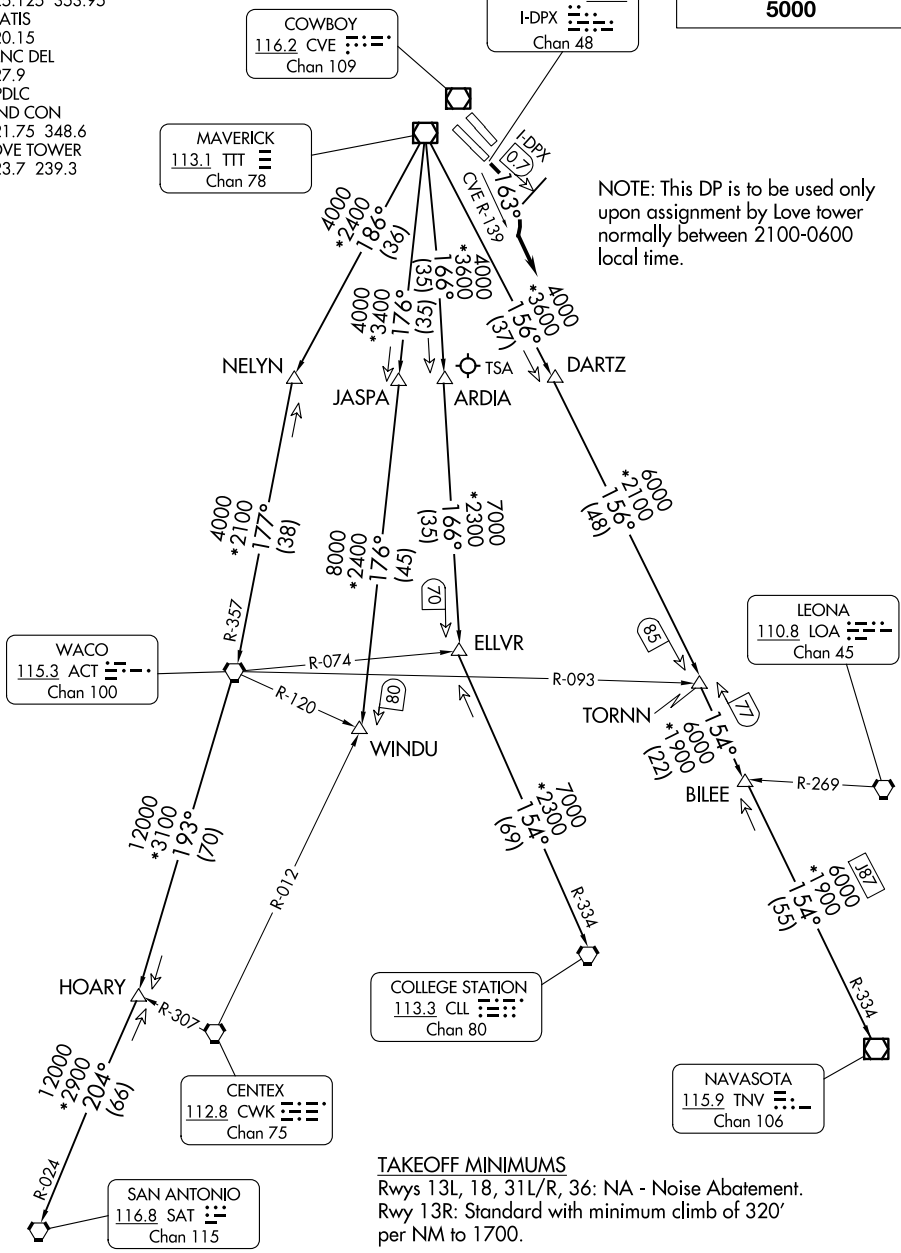
LOCALIZER 111.1  
I-DPX  
Chan 48

**TOP ALTITUDE:  
5000**

COWBOY  
116.2 CVE  
Chan 109

MAVERICK  
113.1 TTT  
Chan 78

NOTE: This DP is to be used only upon assignment by Love tower normally between 2100-0600 local time.



**TAKEOFF MINIMUMS**  
Rwys 13L, 18, 31L/R, 36: NA - Noise Abatement.  
Rwy 13R: Standard with minimum climb of 320' per NM to 1700.

(CONTINUED ON FOLLOWING PAGE)

NOTE: Chart not to scale.

SC-2, 17 APR 2025 to 15 MAY 2025

SC-2, 17 APR 2025 to 15 MAY 2025

# VENUS FOUR DEPARTURE