

(KAYLN3.KAYLN) 24137

KAYLN THREE DEPARTURE (RNAV)

AL-118 (FAA)

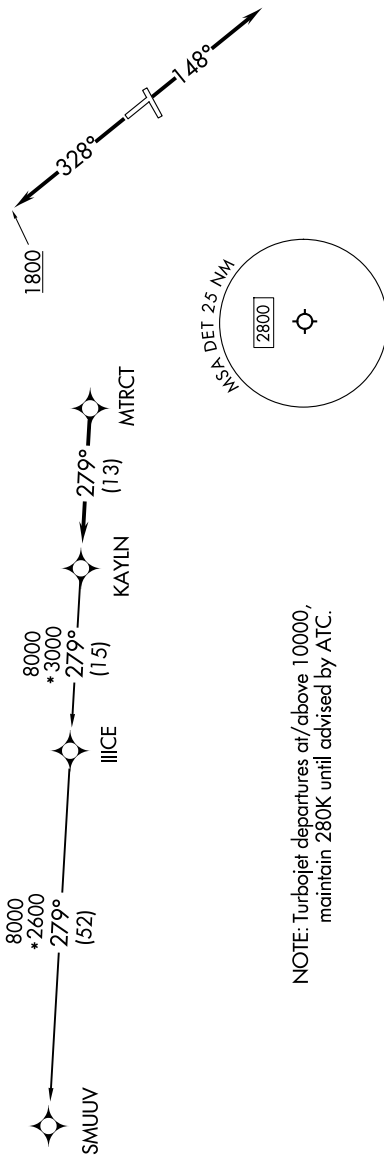
COLEMAN A YOUNG MUNI (DET)

DETROIT, MICHIGAN

EC-1, 17 APR 2025 to 15 MAY 2025

DETROIT DEP CON
134.3 284.0
ATIS
124.875
GND CON
121.85
DETROIT CITY TOWER
121.3 257.8

TAKEOFF MINIMUMS:
Rwy 15, 33: Standard.



NOTE: Turbojet departures at/above 10000, maintain 280K until advised by ATC.

NOTE: Chart not to scale.

**TOP ALTITUDE:
ASSIGNED AT ATC**

RNAV-1 DME/DME/IRU or GPS.
RADAR required.

DEPARTURE ROUTE DESCRIPTION

TAKEOFF RUNWAY 15: Climb on heading 148° or as assigned by ATC, thence....
TAKEOFF RUNWAY 33: Climb on heading 328° to 1800 then as assigned by ATC, thence....

....for RADAR vectors to MTRCT, then on track 279° to KAYLN, then on (transition). Maintain ATC assigned altitude, expect filed altitude 10 minutes after departure.

SMUUV TRANSITION (KAYLN3.SMUUV):

KAYLN THREE DEPARTURE (RNAV)
(KAYLN3.KAYLN) 16MAY24

DETROIT, MICHIGAN
COLEMAN A YOUNG MUNI (DET)

EC-1, 17 APR 2025 to 15 MAY 2025