

WAAS CH <b>50213</b> <b>W17A</b>	APP CRS <b>175°</b>	Rwy Idg <b>8002</b> TDZE <b>1165</b> Apt Elev <b>1167</b>
--	------------------------	---

# RNAV (GPS) RWY 17

ENID WOODRING RGNL (WDG)

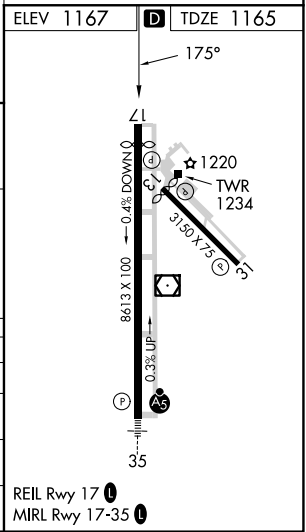
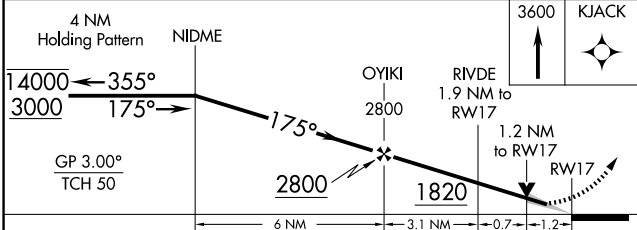
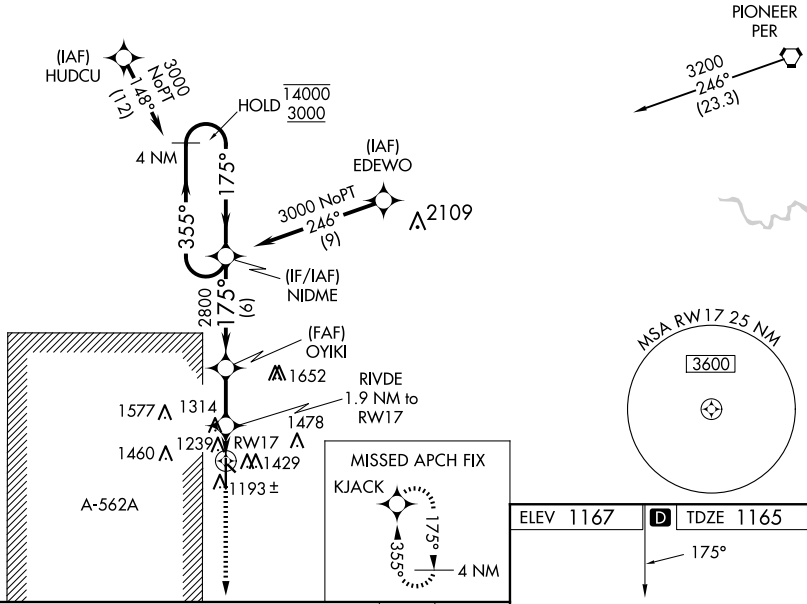
RNP APCH-GPS.		MISSED APPROACH: Climb to 3600 direct KJACK and hold.	
<p><b>⚠</b> Circling Rwy 13 NA at night. For uncompensated Baro-VNAV systems, LNAV/VNAV NA below -17°C or above 54°C.</p>			

AWOS-3PT <b>123.725</b>	VANCE APP CON ★ <b>121.3 346.325</b>	WOODRING TOWER ★ <b>118.9 (CTAF) 0 257.95</b>	GND CON <b>121.925</b>
----------------------------	---	--	---------------------------

Procedure NA for arrival on PER VORTAC  
airway radials 173 CW 335.

SC-1, 17 APR 2025 to 15 MAY 2025

SC-1, 17 APR 2025 to 15 MAY 2025



CATEGORY	A	B	C	D	E
LPV DA		1415-¾	250 (300-¾)		
LNAV/VNAV DA		1415-¾	250 (300-¾)		
LNAV MDA	1580-1	415 (500-1)	1580-1½	415 (500-1½)	
<b>C</b> CIRCLING	1760-1	593 (600-1)	1820-1¾ 653 (700-1¾)	1880-2¼ 713 (800-2¼)	2000-3 833 (900-3)