


WAAS CH 61129 W16A	APP CRS 163°	Rwy Idg TDZE Apt Elev	9010 570 608
--	------------------------	-----------------------------	---

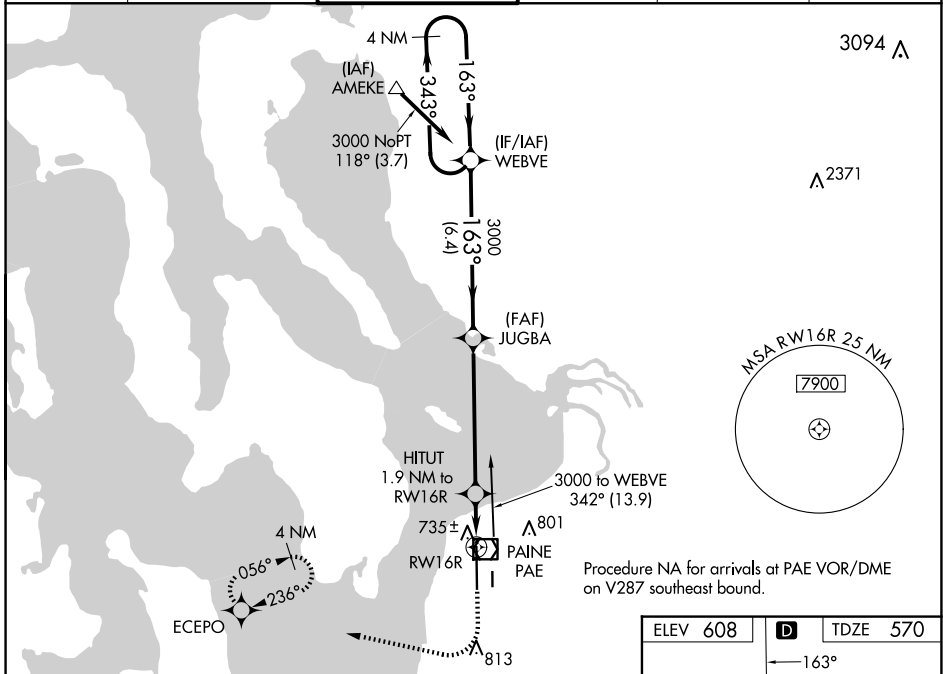
RNAV (GPS) Z RWY 16R

SEATTLE PAINE FLD INTL (P.A.E.)

▽ For uncompensated Baro-VNAV systems, LNAV/VNAV NA below -5°C (23°F) or above 54°C (130°F). Circling Rwy 34R NA at night. DME/DME RNP-0.3 NA.

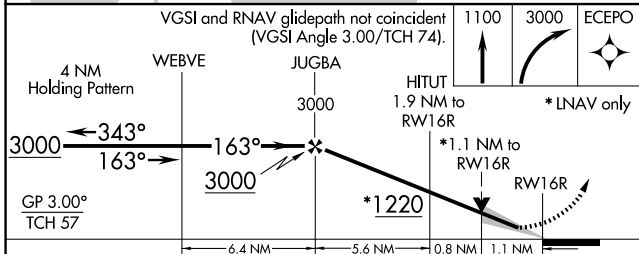
MALSR
 MISSED APPROACH: (Do not exceed 240K until ECEPO) Climb to 1100 then climbing right turn to 3000 direct ECEPO and hold, continue climb-in-hold to 3000.

ATIS 128.65	SEATTLE APP CON 128.5 306.9	PAINE TOWER * 132.95 (CTAF) 0 256.7	GND CON 121.8 339.8	CLNC DEL 127.175	UNICOM 122.95
-----------------------	---------------------------------------	---	-------------------------------	----------------------------	-------------------------

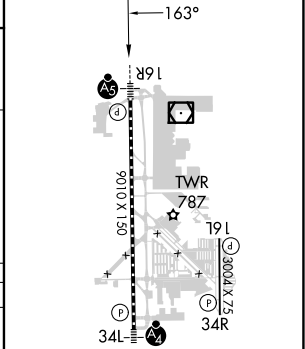


NW-1, 17 APR 2025 to 15 MAY 2025

NW-1, 17 APR 2025 to 15 MAY 2025



ELEV 608	D	TDZE 570
----------	----------	----------



CATEGORY	A	B	C	D
LPV DA		770/18	200 (200-½)	
LNAV/VNAV DA		913/30	343 (400-⅝)	
LNAV MDA	1000/24	430 (400-½)	1000/40	430 (400-¾)
C CIRCLING	1100-1	492 (500-1)	1120-1½ 512 (600-1½)	1160-2 552 (600-2)

TDZ/CL Rwy 16R
HIRL Rwy 16R-34L
REIL Rwy 16L and 34R
MIRL Rwy 16L-34R