

APP CRS	Rwy Idg	6000
191°	TDZE	144
	Apt Elev	147

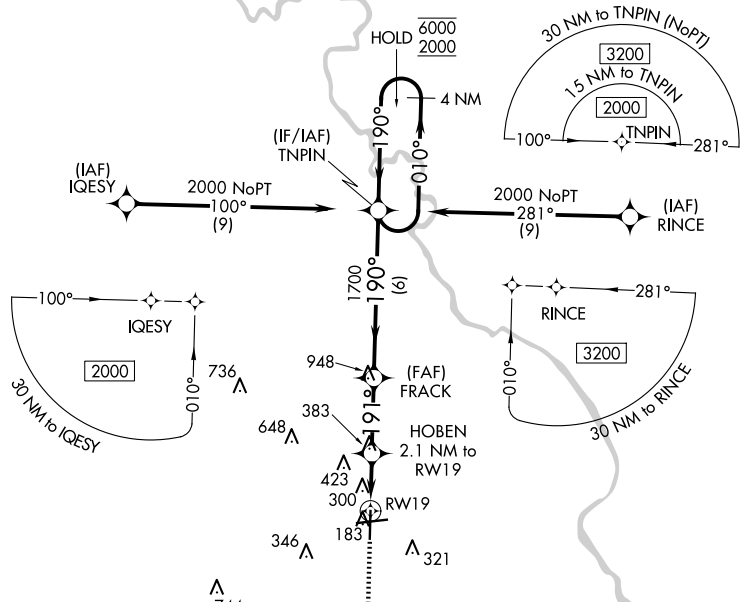
RNAV (GPS) RWY 19

FLORENCE RGNL (FLO)

RNP APCH - GPS.		MISSED APPROACH: Climb to 2000 direct PAILS and on track 188° to NUTAL and hold.			
<p>▼ Rwy 19 helicopter visibility reduction below 1 SM NA. Straight-in Rwy 19 NA at night, Circling Rwy 1, 19 NA at night.</p>					
ATIS	FLORENCE APP CON★	FLORENCE TOWER★	GND CON	CLNC DEL	UNICOM
123.625	118.6 341.7 <small>(256°-074°)</small> 135.25 316.15 <small>(075°-255°)</small>	125.1 (CTAF) 353.85	121.9 353.85	121.9 353.85	122.95

SE-2, 17 APR 2025 to 15 MAY 2025

SE-2, 17 APR 2025 to 15 MAY 2025



ELEV 147	TDZE 144
191°	
<p>MIRL Rwy 1-19 REIL Rwys 1, 19 and 27 HIRL Rwy 9-27</p>	

2000	PAILS	NUTAL	VGSi and descent angles not coincident (VGSi Angle 3.00/TCH 32).	
↑	✦	△	4 NM	TNPIN Holding Pattern
2000	tr 188°	△	4 NM	TNPIN Holding Pattern
<p>FRACK HOBEN 2.1 NM to RWY 19 RWY 19</p>		<p>010° → 6000 ← 190° 2000</p>		
<p>2.1 NM</p>		<p>2.7 NM</p>		
<p>6 NM</p>				
CATEGORY	A	B	C	D
LNAV MDA	560-1	416 (500-1)	560-1 ¹ / ₈	416 (500-1 ¹ / ₈)
CIRCLING	640-1 493 (500-1)	660-1 513 (600-1)	900-2 ¹ / ₄ 753 (800-2 ¹ / ₄)	900-2 ¹ / ₂ 753 (800-2 ¹ / ₂)