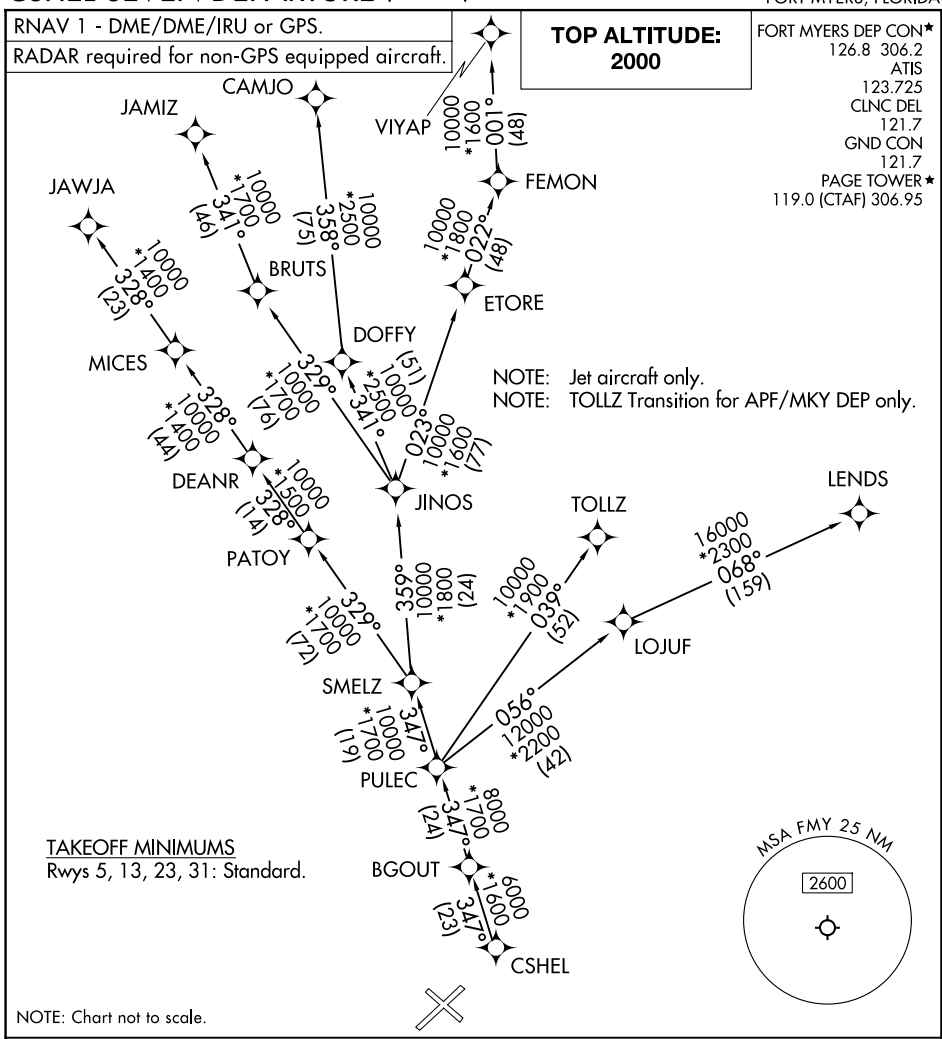


# CSHEL SEVEN DEPARTURE (RNAV)



SE-3, 17 APR 2025 to 15 MAY 2025

SE-3, 17 APR 2025 to 15 MAY 2025

## DEPARTURE ROUTE DESCRIPTION

**TAKEOFF RUNWAYS 5, 13, 23, 31:** Climb on assigned heading for RADAR vectors to CSHEL, thence...

... on assigned transition. Maintain 2000. Expect clearance to filed altitude within 10 minutes after departure.

CAMJO TRANSITION (CSHEL7.CAMJO)

JAMIZ TRANSITION (CSHEL7.JAMIZ)

JAWJA TRANSITION (CSHEL7.JAWJA)

LEND S TRANSITION (CSHEL7.LEND S)

TOLLZ TRANSITION (CSHEL7.TOLLZ)

VIYAP TRANSITION (CSHEL7.VIYAP)

# CSHEL SEVEN DEPARTURE (RNAV)