

LOC I-FMY <b>110.7</b>	APP CRS <b>051°</b>	Rwy Idg <b>5545</b> TDZE <b>15</b> Apt Elev <b>17</b>
---------------------------	------------------------	---

# ILS or LOC RWY 5

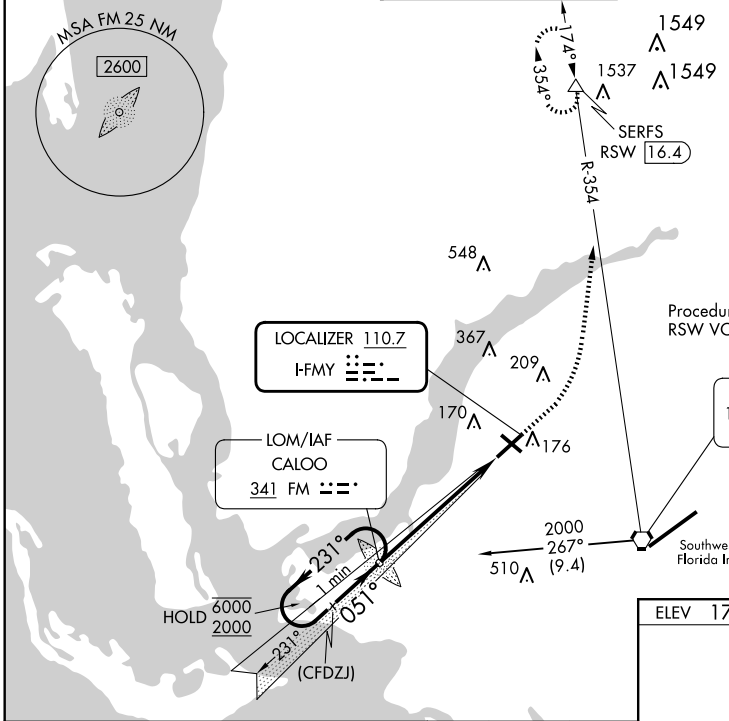
PAGE FLD (FMY)

ADF or RADAR required for procedure entry. ADF required for LOC only.  
DME Required.

**⚠** Rwy 5 helicopter visibility reduction below  $\frac{3}{4}$  SM NA. When Circling to Rwy 31 at night, operational VGSI required, remain on or above VGSI glidepath until threshold.

MISSED APPROACH: Climb to 1000 then climbing left turn to 2600 on RSW VORTAC R-354 to SERFS/RSW 16.4 DME and hold.

ATIS <b>123.725</b>	FORT MYERS APP CON ★ <b>125.15 306.2</b> (Rwys 5, 13) <b>126.8 306.2</b> (Rwys 23, 31)	PAGE TOWER ★ <b>119.0</b> (CTAF) <b>306.95</b>	GND CON <b>121.7</b>	CLNC DEL <b>121.7</b>
------------------------	--	---	-------------------------	--------------------------

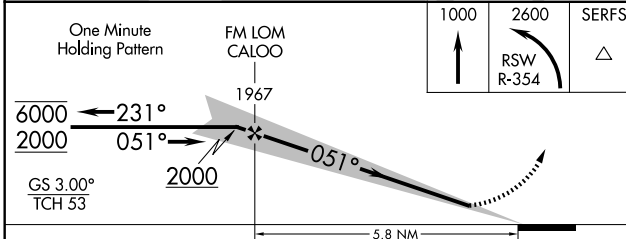


ALTERNATE MISSED APCH FIX

CALOO FM 341

Procedure NA for arrival on RSW VORTAC airway radial 312.

LEE COUNTY 114.15 RSW Chan 88(Y)



ELEV 17	D	TDZE 15
---------	---	---------

TWR 100

6006 X 150

4610 X 150

051°

231°

REIL Rwys 5, 13, 23 and 31

MIRL Rwy 5-23 and 13-31

FAF to MAP 5.8 NM

Knots	60	90	120	150	180
Min:Sec	5:48	3:52	2:54	2:19	1:56

CATEGORY	A	B	C	D
S-ILS 5	265-1		250 (300-1)	
S-LOC 5	460-1	445 (500-1)	460-1 $\frac{3}{8}$	445 (500-1 $\frac{3}{8}$ )
CIRCLING	540-1	523 (600-1)	600-1 $\frac{1}{2}$ 583 (600-1 $\frac{1}{2}$ )	680-2 663 (700-2)

SE-3, 17 APR 2025 to 15 MAY 2025

SE-3, 17 APR 2025 to 15 MAY 2025