

(SRQ.PUMPP1) 24249

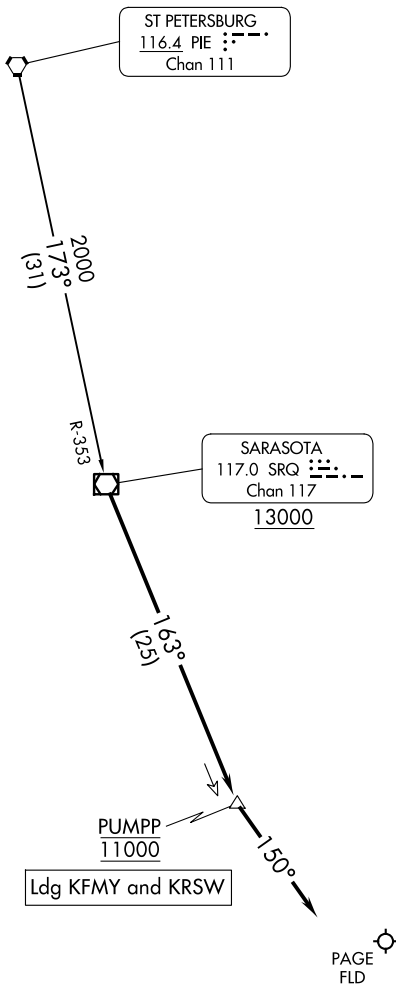
AL-154 (FAA)

PUMPP ONE ARRIVAL

FORT MYERS, FLORIDA

FORT MYERS APP CON ★
134.425 306.2
FMY ATIS
123.725
RSW D-ATIS
124.65

RADAR required.
DME required.



NOTE: Chart not to scale.

ARRIVAL ROUTE DESCRIPTION

ST PETERSBURG TRANSITION (PIE.PUMPP1): From over PIE VORTAC on PIE R-173 and SRQ R-353 to SRQ VOR/DME, thence. . .

. . .from over SRQ VOR/DME on SRQ R-163 to cross PUMPP at 11000, then on heading 150°. Expect RADAR vectors to final approach course.

PUMPP ONE ARRIVAL

FORT MYERS, FLORIDA

(SRQ.PUMPP1) 05SEP24

SE-3, 17 APR 2025 to 15 MAY 2025

SE-3, 17 APR 2025 to 15 MAY 2025