

|  |                        |   |
|--|------------------------|---|
| WAAS<br>CH <b>77638</b><br><b>W31A</b> | APP CRS<br><b>313°</b> | Rwy Idg <b>2821</b><br>TDZE <b>836</b><br>Apt Elev <b>836</b> |
|--|------------------------|---|

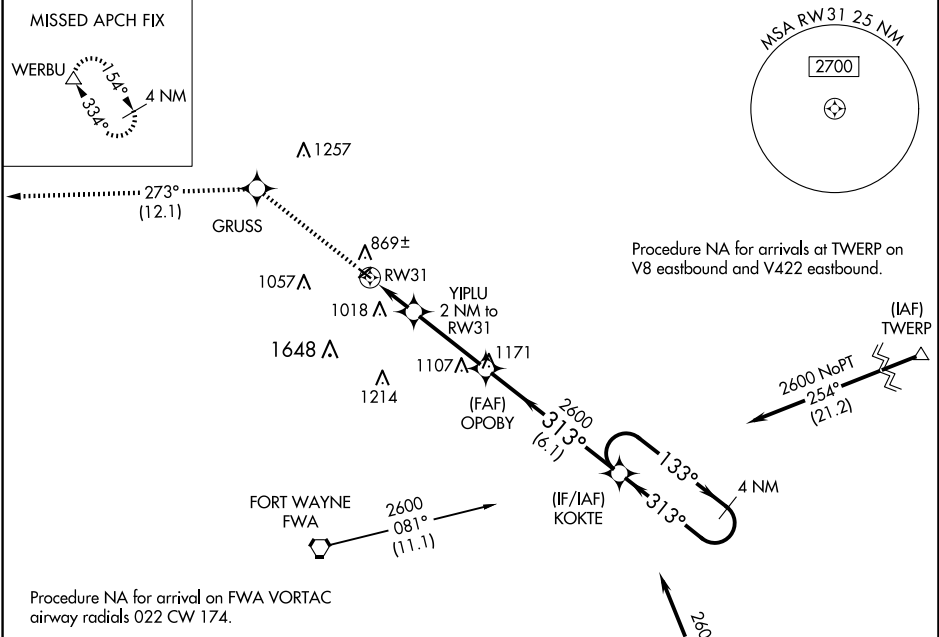
# RNAV (GPS) RWY 31

SMITH FLD (SMD)

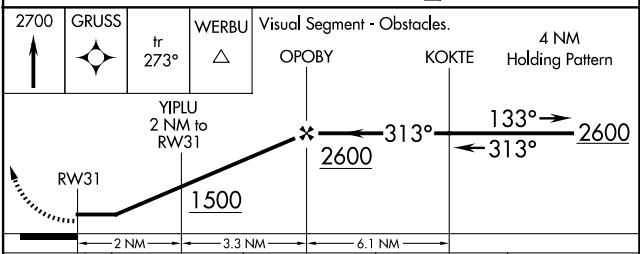
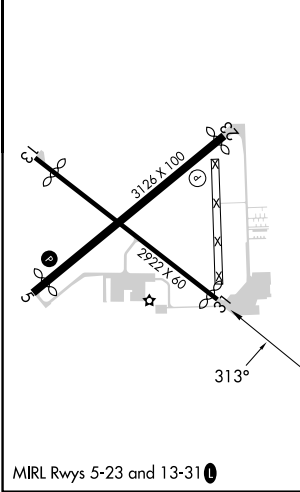
**▽** Rwy 31 helicopter visibility reduction below 1 SM NA. DME/DME RNP-0.3 NA.  
**⚠** NA Procedure NA at night. When local altimeter setting not received, use Fort Wayne Intl altimeter setting and increase all MDA 40 feet, LP Cat C visibility 1/2 SM and LNAV Cat C visibility 1/2 SM.

MISSED APPROACH: Climb to 2700 direct GRUSS and on track 273° to WERBU and hold.

|                         |  |                                 |
|-------------------------|--|---------------------------------|
| AWOS-3<br><b>124.55</b> | FORT WAYNE APP CON<br><b>127.2 284.6</b> | UNICOM<br><b>122.8 (CTAF) 0</b> |
|-------------------------|--|---------------------------------|



|          |          |
|----------|----------|
| ELEV 836 | TDZE 836 |
|----------|----------|



| CATEGORY          | A      | B           | C                             | D  |
|-------------------|--------|-------------|-------------------------------|----|
| LP MDA            | 1240-1 | 404 (500-1) | 1240-1 1/8<br>404 (500-1 1/8) | NA |
| LNAV MDA          | 1260-1 | 424 (500-1) | 1260-1 1/4<br>424 (500-1 1/4) | NA |
| <b>C</b> CIRCLING | 1400-1 | 564 (600-1) | 1940-3<br>1104 (1200-3)       | NA |

EC-2, 17 APR 2025 to 15 MAY 2025

EC-2, 17 APR 2025 to 15 MAY 2025