

# HI-ILS Y or LOC Y RWY 18

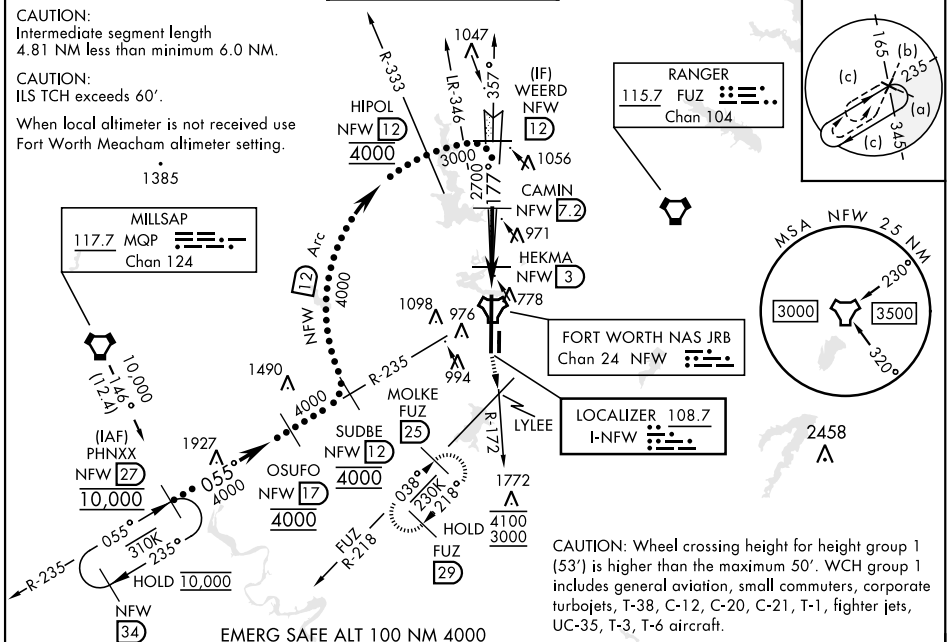
LOC I-NFW <b>108.7</b>	APCH CRS <b>177°</b>	Rwy Ldg <b>11,999</b> TDZE <b>636</b> Arpt Elev <b>650</b>	[USN]	FORT WORTH NAS JRB (CARSWELL FLD) (KNFW)
---------------------------	-------------------------	--	-------	--

FUZ VORTAC or RADAR required.

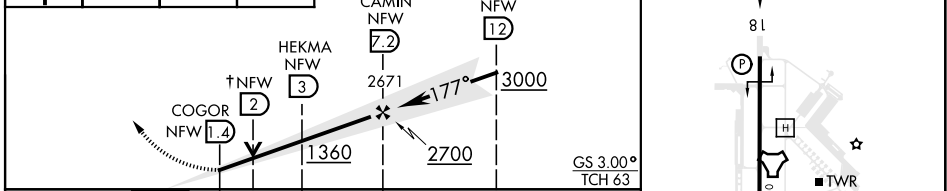
\* Circling not authorized E of Rwy 18-36.

MISSED APPROACH: Climb to 3000 direct LYLEE to intercept FUZ VORTAC R-218 to MOLKE and hold.

ATIS★ <b>351.675</b>	LONE STAR APP CON <b>125.8 257.95</b>	NAVY FORT WORTH TOWER★ <b>120.95 269.325</b>	GND CON <b>121.675 279.575</b>	CLNC DEL <b>126.4 254.325</b>	ASR/ PAR
-------------------------	--	---	-----------------------------------	----------------------------------	-------------



3000	LYLEE	FUZ R-218	MOLKE FUZ 25	↑ VDP NA when using FTW altimeter setting	ELEV 650	TDZE 636
------	-------	-----------	--------------	---	----------	----------



CATEGORY	C	D	E
S-ILS 18	836-¾	200	(200-¾)
S-LOC 18	1040-1⅞	404	(400-1⅞)
<b>C</b> CIRCLING*	1320-1¾ 670 (700-1¾)	1340-2¼ 690 (700-2¼)	1440-2¾ 790 (800-2¾)
FORT WORTH MEACHAM ALTIMETER			
S-ILS 18	856-¾	220	(300-¾)
S-LOC 18	1060-1¼	424	(500-1¼)
<b>C</b> CIRCLING*	1340-2 690 (700-2)	1360-2¼ 710 (800-2¼)	1460-2¾ 810 (900-2¾)

FAF to MAP 5.8 NM					
Knots	120	140	160	180	200
Min:Sec	2:54	2:29	2:11	1:56	1:44

# HI-ILS Y or LOC Y RWY 18

SC-2, 17 APR 2025 to 15 MAY 2025

SC-2, 17 APR 2025 to 15 MAY 2025