

FORT WORTH, TEXAS

ILS Z or LOC Z RWY 18

LOC I-NFW 108.7	APCH CRS 177°	Rwy Idg 11,999 TDZE 636 Arpt Elev 650
---------------------------	-------------------------	--

[USN] FORT WORTH NAS JRB (CARSWELL FLD) (KNFW)

FUZ VORTAC or RADAR required

MISSED APPROACH: Climb to 3000 direct LYLEE to intercept FUZ VORTAC R-218 to MOLKE and hold.

* Circling not authorized E of Rwy 18-36.

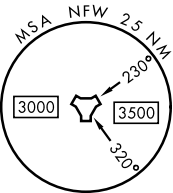
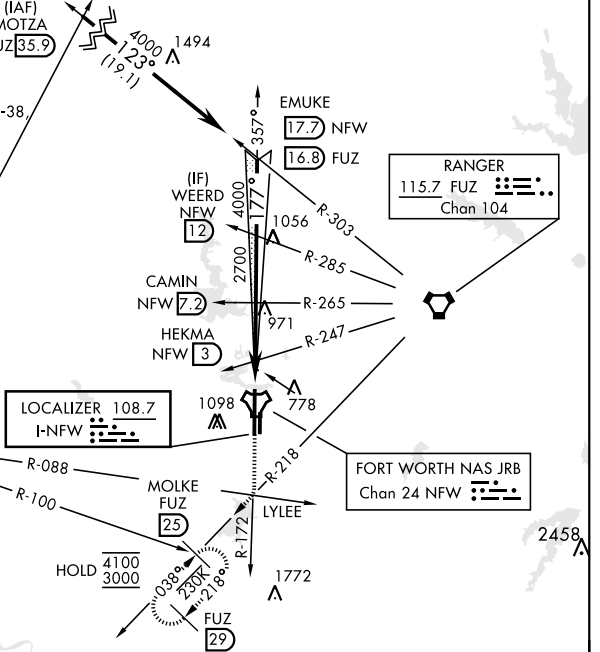
ATIS* 351.675	LONE STAR APP CON 125.8 257.95	NAVY FORT WORTH TOWER* 120.950 269.325	GND CON 121.675 279.575	CLNC DEL 126.4 254.325	ASR/ PAR
-------------------------	--	--	-----------------------------------	----------------------------------	-------------

CAUTION: ILS TCH exceeds 60'.

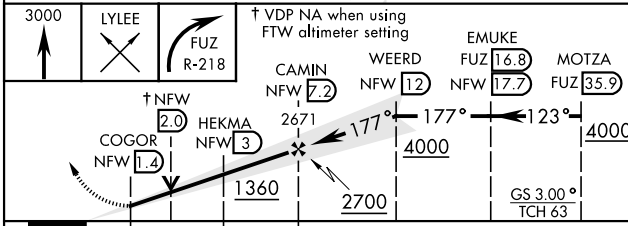
CAUTION: Wheel crossing height for height group 1 (53') is higher than the maximum 50'. Wheel crossing height group 1 includes general aviation, small commuters, corporate turboprops, T-38, C-12, C-20, C-21, T-1, fighter jets, UC-35, T-3, T-6 aircraft.
1470

When local altimeter is not received, use Fort Worth Meacham altimeter setting.

MILLSAP
117.7 MQP
Chan 124

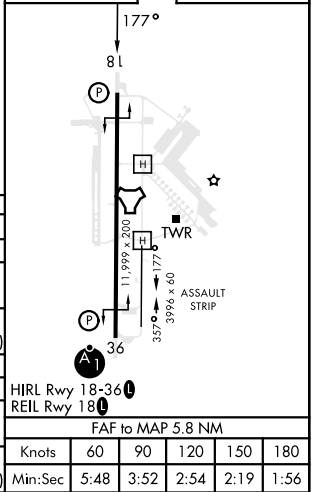


EMERG SAFE ALT 100 NM 4000



ELEV 650	TDZE 636
----------	----------

CATEGORY	A	B	C	D	E
S-ILS 18	836- ³ / ₄		200	(200- ³ / ₄)	
S-LOC 18	1040-1	404 (400-1)	1040-1 ¹ / ₈	404	(400-1 ¹ / ₈)
C CIRCLING*	1220-1 570 (600-1)	1320-1 670 (700-1)	1320-1 ³ / ₄ 670 (700-1 ³ / ₄)	1340-2 ¹ / ₄ 690 (700-2 ¹ / ₄)	1440-2 ³ / ₄ 790 (800-2 ³ / ₄)
FORT WORTH MEACHAM ALTIMETER					
S-ILS 18	856- ³ / ₄		220	(300- ³ / ₄)	
S-LOC 18	1060-1	424 (500-1)	1060-1 ¹ / ₄	424	(500-1 ¹ / ₄)
C CIRCLING*	1240-1 590 (600-1)	1340-1 690 (700-1)	1340-2 690 (700-2)	1360-2 ¹ / ₄ 710 (800-2 ¹ / ₄)	1460-2 ³ / ₄ 810 (900-2 ³ / ₄)



FORT WORTH, TEXAS 32°46'N-97°26'W FORT WORTH NAS JRB (CARSWELL FLD) (KNFW)

Orig 18MAY23

ILS Z or LOC Z RWY 18

SC-2, 17 APR 2025 to 15 MAY 2025

SC-2, 17 APR 2025 to 15 MAY 2025