

NANDR THREE DEPARTURE (RNAV)

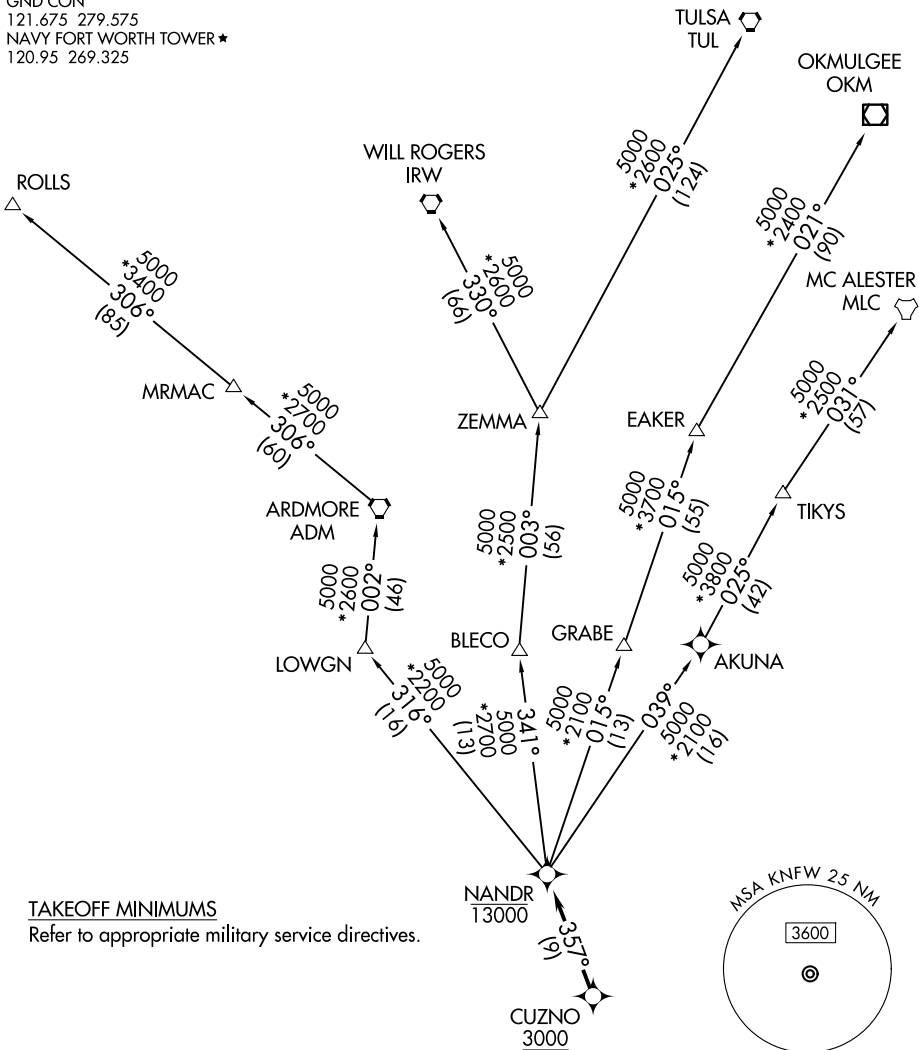
FORT WORTH, TEXAS

LONE STAR DEP CON
 125.8 257.95
 ATIS*
 351.675
 GND CON
 121.675 279.575
 NAVY FORT WORTH TOWER*
 120.95 269.325

RNAV 1 - DME/DME/IRU or GPS.

RADAR required.

**TOP ALTITUDE:
ASSIGNED BY ATC**



SC-2, 17 APR 2025 to 15 MAY 2025

SC-2, 17 APR 2025 to 15 MAY 2025

TAKEOFF MINIMUMS

Refer to appropriate military service directives.



NOTE: EAKER Transition: For TUL terminal arrivals only.
 NOTE: TULSA Transition: For all aircraft overflying TUL VORTAC.
 NOTE: Aircraft arriving to the Oklahoma City terminal area, file and expect the ZEMMA enroute transition.

NOTE: Chart note to scale.

(CONTINUED ON FOLLOWING PAGE)

NANDR THREE DEPARTURE (RNAV)

FORT WORTH, TEXAS

(NANDR3.NANDR) 17 APR 25

FORT WORTH NAS JRB (CARSWELL FLD) (NFW)