

FORT WORTH, TEXAS

TACAN Z RWY 18

TACAN NFW Chan 24	APCH CRS 172°	Rwy Ldg TDZE Arprt Elev 11,999 636 650
-----------------------------	-------------------------	--

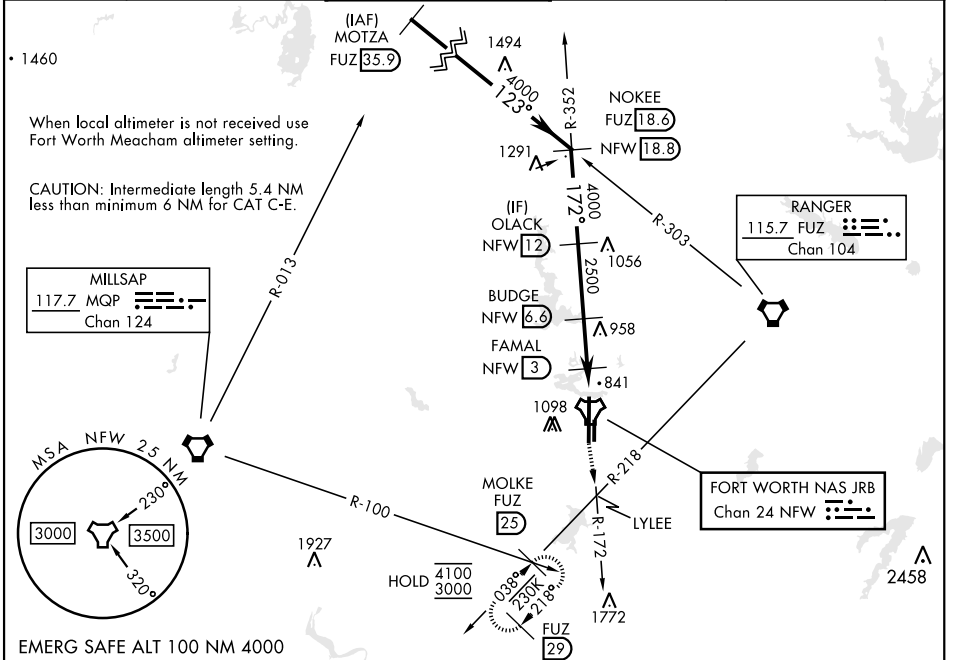
[USN] FORT WORTH NAS JRB (CARSWELL FLD) (KNFW)

FUZ VORTAC or RADAR required.

▼ * Circling not authorized E of Rwy 18-36.

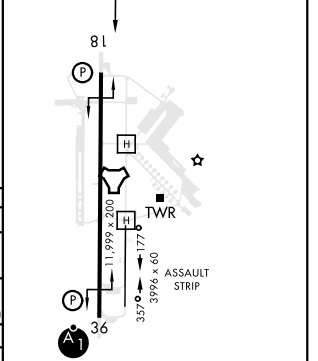
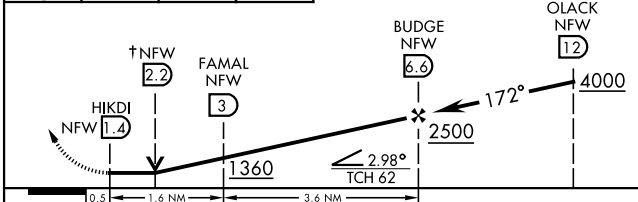
MISSED APPROACH: Climb to 3000 direct LYLEE to intercept FUZ VORTAC R-218 to MOLKE and hold.

ATIS* 351.675	LONE STAR APP CON 125.8 257.95	NAVY FORT WORTH TOWER* 120.950 269.325	GND CON 121.675 279.575	CLNC DEL 126.4 254.325	ASR
-------------------------	--	--	-----------------------------------	----------------------------------	-----



3000	LYLEE	FUZ R-218	MOLKE FUZ 25	† VDP NA when using FTW altimeter setting
------	-------	-----------	--------------	---

ELEV 650	TDZE 636
----------	----------



CATEGORY	A	B	C	D	E
S-18	1100-1 464 (500-1)		1100-1 3/8 464 (500-1 3/8)		
C CIRCLING*	1220-1 570 (600-1)	1320-1 670 (700-1)	1320-1 3/4 670 (700-1 3/4)	1340-2 1/4 690 (700-2 1/4)	1440-2 3/4 790 (800-2 3/4)
FORT WORTH MEACHAM ALTIMETER					
S-18	1120-1 484 (500-1)		1120-1 3/8 484 (500-1 3/8)		
C CIRCLING*	1240-1 590 (600-1)	1340-1 690 (700-1)	1340-2 690 (700-2)	1360-2 1/4 710 (800-2 1/4)	1460-2 3/4 810 (900-2 3/4)

FORT WORTH, TEXAS 32°46'N-97°26'W FORT WORTH NAS JRB (CARSWELL FLD) (KNFW)

Orig 18MAY23

TACAN Z RWY 18

SC-2, 17 APR 2025 to 15 MAY 2025

SC-2, 17 APR 2025 to 15 MAY 2025