

WAAS CH <b>70617</b> <b>W17A</b>	APP CRS <b>172°</b>	Rwy Idg TDZE Apt Elev	<b>7852</b> <b>1884</b> <b>1887</b>
--	------------------------	-----------------------------	---

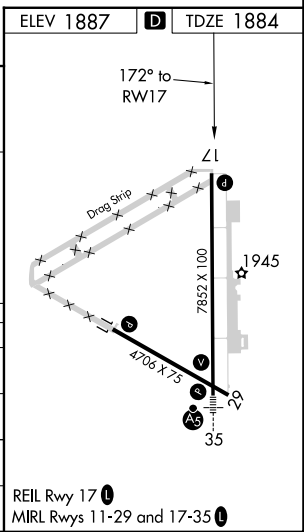
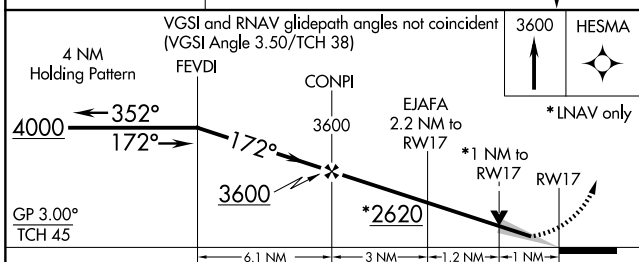
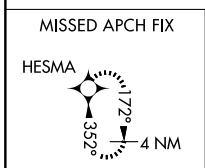
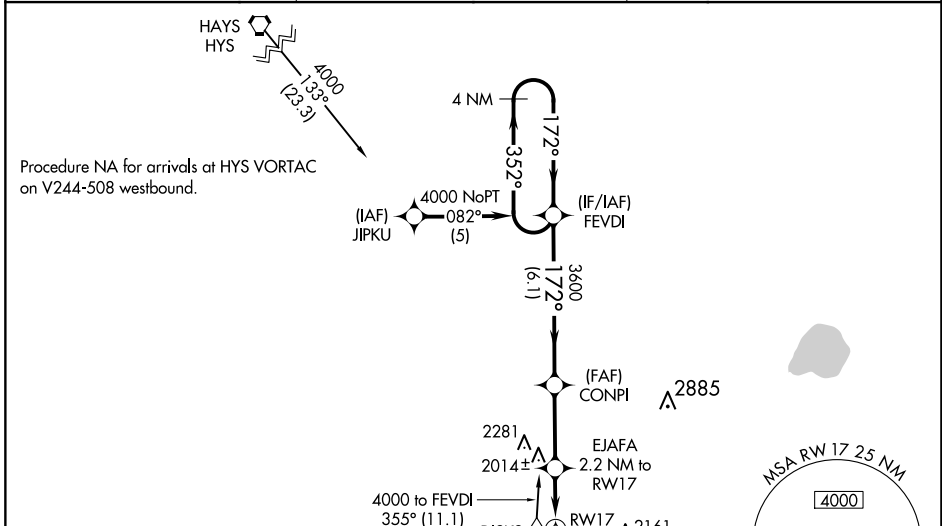
# RNAV (GPS) RWY 17

GREAT BEND MUNI (G·B·D)

**⚠** DME/DME RNP-0.3 NA. For uncompensated Baro-VNAV systems, LNAV/VNAV NA below -18°C (0°F) or above 54°C (130°F).

MISSED APPROACH: Climb to 3600 direct HESMA and hold.

AWOS-3PT <b>119.275</b>	KANSAS CITY CENTER <b>118.8 322.425</b>	UNICOM <b>122.8 (CTAF) 0</b>
----------------------------	--	---------------------------------



CATEGORY	A	B	C	D
LPV DA		2084-3/4	200 (200-3/4)	
LNAV/VNAV DA		2282-1 1/2	398 (400-1 1/2)	
LNAV MDA	2280-1	396 (400-1)		2280-1 1/4 396 (400-1 1/4)
CIRCLING	2320-1 433 (500-1)	2340-1 453 (500-1)	2520-1 3/4 633 (700-1 3/4)	2640-2 1/2 753 (800-2 1/2)

NC-2, 17 APR 2025 to 15 MAY 2025

NC-2, 17 APR 2025 to 15 MAY 2025