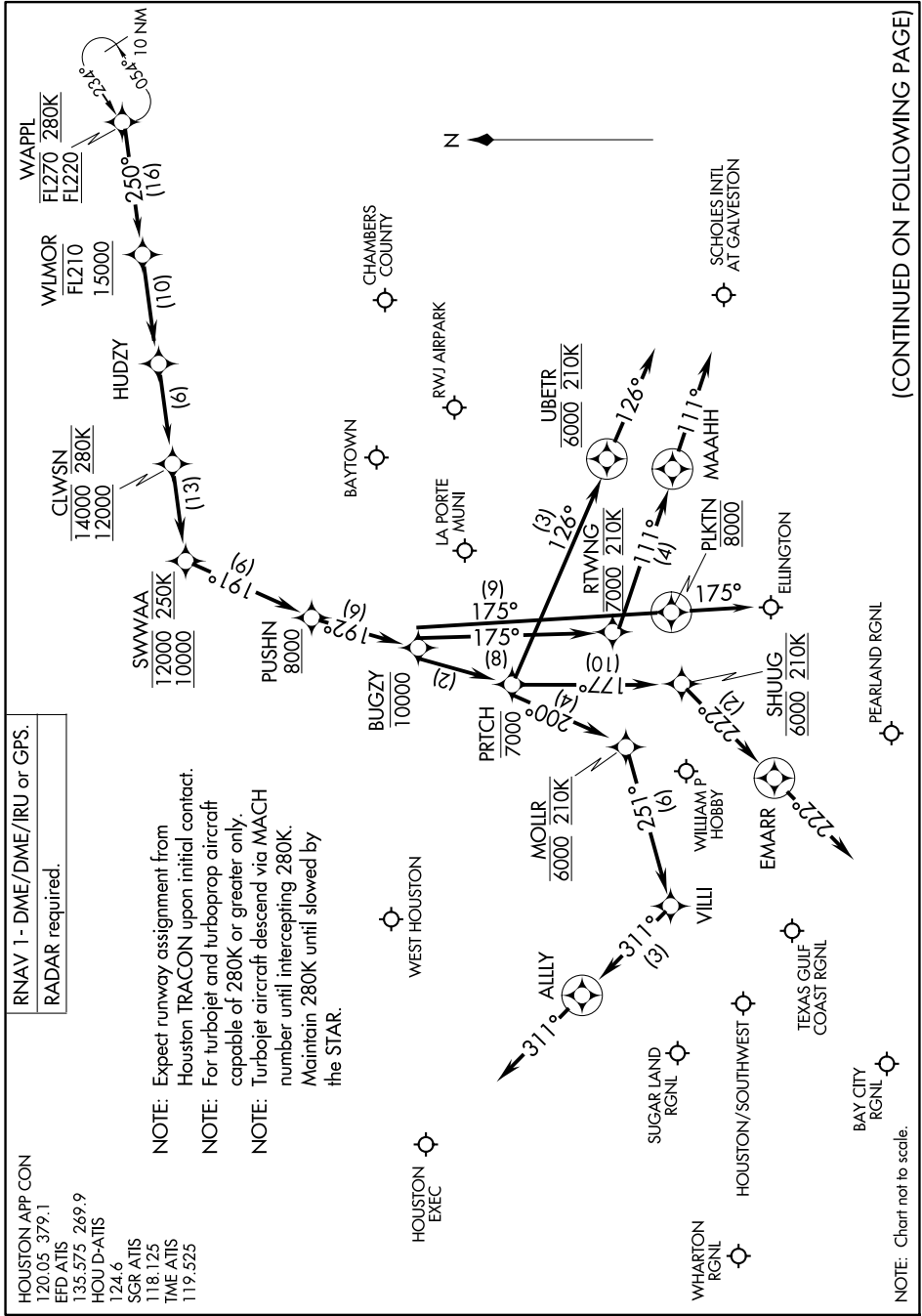


WAPPL SIX ARRIVAL (RNAV) Arrival Routes

HOUSTON, TEXAS

SC-5, 17 APR 2025 to 15 MAY 2025



RNAV 1 - DME/DME/IRU or GPS.
 RADAR required.

NOTE: Expect runway assignment from Houston TRACON upon initial contact.
NOTE: For turbojet and turboprop aircraft capable of 280K or greater only.
NOTE: Turbojet aircraft descend via MACH number until intercepting 280K. Maintain 280K until slowed by the STAR.

(CONTINUED ON FOLLOWING PAGE)

SC-5, 17 APR 2025 to 15 MAY 2025

WAPPL SIX ARRIVAL (RNAV) Arrival Routes

HOUSTON, TEXAS

NOTE: Chart not to scale.