

LOC/DME I-HON <b>110.3</b> Chan <b>40</b>	APP CRS <b>121°</b>	Rwy Idg <b>7201</b> TDZE <b>1289</b> Apt Elev <b>1289</b>
---	------------------------	---

# ILS or LOC RWY 12

HURON RGNL (HON)

RNAV 1-GPS or RADAR required for procedure entry. ADF required.  
From HUMSO and WEDEM: RNAV-1 GPS required.

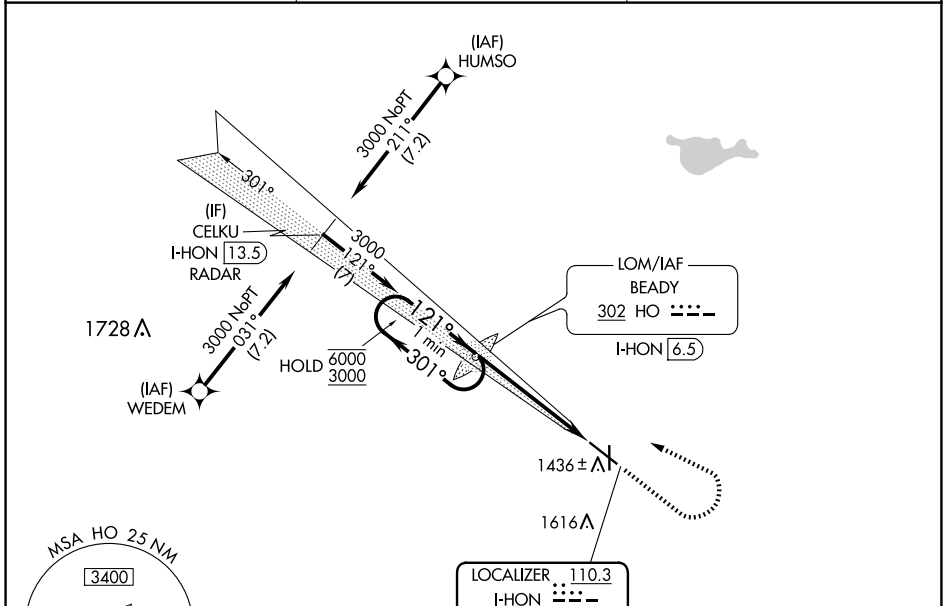
MALSR



MISSED APPROACH: Climb to 3000 then left turn direct BEADY LOM and hold.

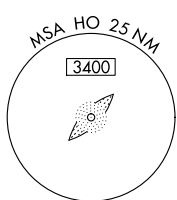
**▼** Circling Rwy 18, 36 NA at night. For inop ALS, increase S-LOC 12  
**▲** Cat C/D to 1 3/8 SM.

ASOS <b>118.125</b>	MINNEAPOLIS CENTER <b>126.25 339.8</b>	UNICOM <b>123.0 (CTAF)</b>
------------------------	---	-------------------------------

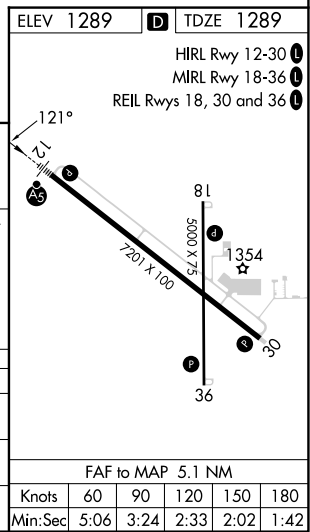
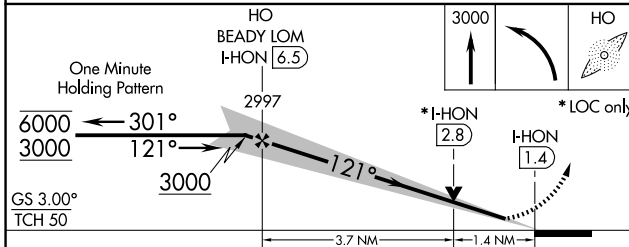


NC-1, 17 APR 2025 to 15 MAY 2025

NC-1, 17 APR 2025 to 15 MAY 2025



ELEV 1289	<b>D</b> TDZE 1289
HIRL Rwy 12-30 <b>!</b>	
MIRL Rwy 18-36 <b>!</b>	
REIL Rws 18, 30 and 36 <b>!</b>	



CATEGORY	A	B	C	D
S-ILS 12	1489-1/2 200 (200-1/2)			
S-LOC 12	1780-1/2	491 (500-1/2)	1780-1	491 (500-1)
<b>C</b> CIRCLING	1820-1	531 (600-1)	1920-1 3/4 631 (700-1 3/4)	1980-2 1/4 691 (700-2 1/4)

FAF to MAP 5.1 NM					
Knots	60	90	120	150	180
Min:Sec	5:06	3:24	2:33	2:02	1:42