

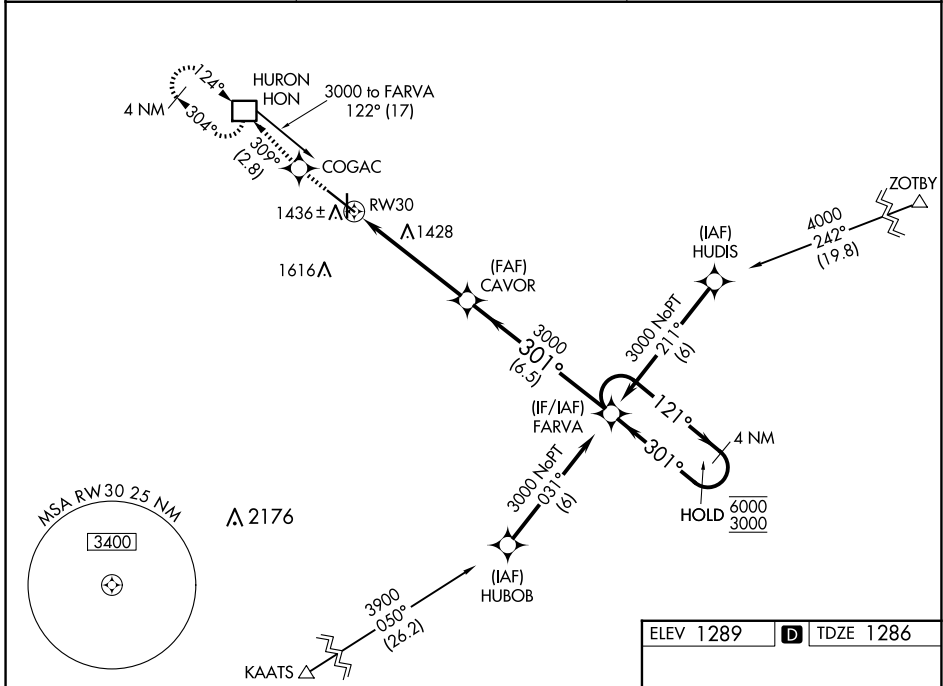
WAAS CH 77514 W30A	APP CRS 301°	Rwy Idg TDZE Apt Elev	7201 1286 1289
--	------------------------	-----------------------------	---

RNAV (GPS) RWY 30

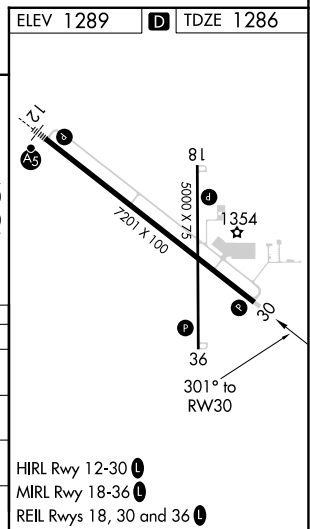
HURON RGNL (HON)

RNP APCH.	MISSED APPROACH: Climb to 3000 direct COGAC and on track 309° to HON DME and hold.
<p>▼ Circling Rwy 18, 36 NA at night. Rwy 30 helicopter visibility reduction below 3/4 SM NA. For uncompensated Baro-VNAV systems, LNAV/VNAV NA below -17°C or above 54°C.</p>	

ASOS 118.125	MINNEAPOLIS CENTER 126.25 339.8	UNICOM 123.0 (CTAF) 0
------------------------	---	---------------------------------



3000	COGAC	HON	CAVOR	FARVA	4 NM Holding Pattern
↑	✦	tr 309°	□		
*LNAV only					
<p>*1.3 NM to RWY 30</p>					
1.3 NM		3.9 NM		6.5 NM	
CATEGORY	A	B	C	D	
LPV DA	1559-1		273 (300-1)		
LNAV/VNAV DA	1721-1½		435 (500-1½)		
LNAV MDA	1760-1	474 (500-1)	1760-1⅜ 474 (500-1⅜)	1760-1½ 474 (500-1½)	
C CIRCLING	1820-1	531 (600-1)	1920-1¾ 631 (700-1¾)	1980-2¼ 691 (700-2¼)	



NC-1, 17 APR 2025 to 15 MAY 2025

NC-1, 17 APR 2025 to 15 MAY 2025

- HIRL Rwy 12-30 **L**
- MRL Rwy 18-36 **L**
- REIL Rws 18, 30 and 36 **L**