

LOC/DME I-ZUK 111.75 Chan 54 (Y)	APP CRS 230°	Rwy Idg 11200 TDZE 783 Apt Elev 796
---	------------------------	--

ILS RWY 23R (SA CAT I & II)

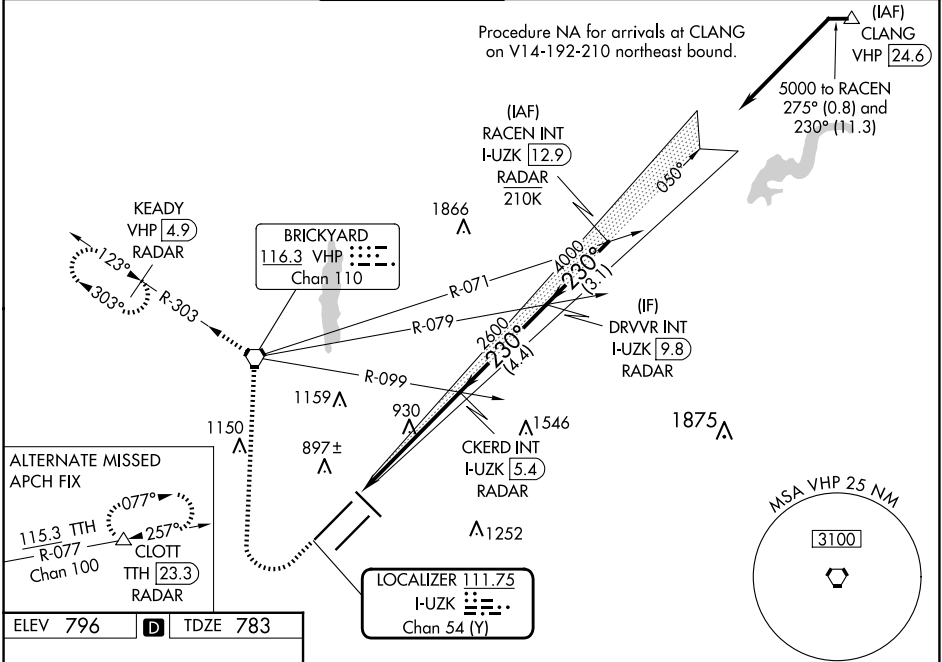
INDIANAPOLIS INTL (IND)

⚠ Simultaneous approach authorized. DME or RADAR required. Requires specific OPSPEC, MSPEC, or LOA approval and use of HUD to DH. Reduced lighting: requires specific OPSPEC, MSPEC, or LOA approval and use of autoland or HUD to touchdown.



MISSED APPROACH: Climb to 1500 then climbing right turn to 3000 direct VHP VORTAC and on VHP R-303 to KEADY/VHP 4.9 DME/RADAR and hold.

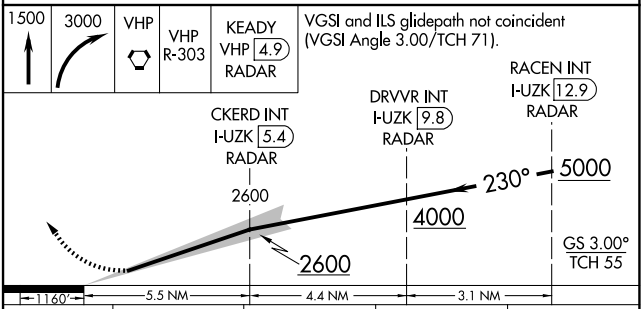
D-ATIS 134.25	INDIANAPOLIS APP CON 128.175 317.8	INDY TOWER 120.9 251.1	GND CON 121.9	CLNC DEL 128.75 251.1	CPDLC
-------------------------	--	----------------------------------	-------------------------	---------------------------------	-------



EC-2, 17 APR 2025 to 15 MAY 2025

EC-2, 17 APR 2025 to 15 MAY 2025

ELEV 796	D	TDZE 783
----------	----------	----------



CATEGORY	A	B	C	D
S-ILS 23R	SA CAT I RA 140/14 150 DA 933			
S-ILS 23R	SA CAT II RA 96/12 100 DA 883			

SA CATEGORY I & II ILS - SPECIAL AIRCREW & AIRCRAFT CERTIFICATION REQUIRED

HIRL all Rwys
TDZ/CL Rwys 5L and 5R

INDIANAPOLIS, INDIANA
Amdt 6 29MAR18

INDIANAPOLIS INTL (IND)

39°43'N-86°18'W

ILS RWY 23R (SA CAT I & II)