

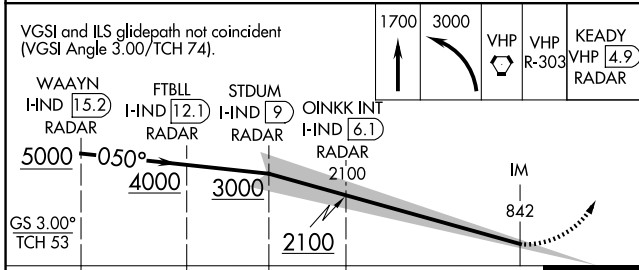
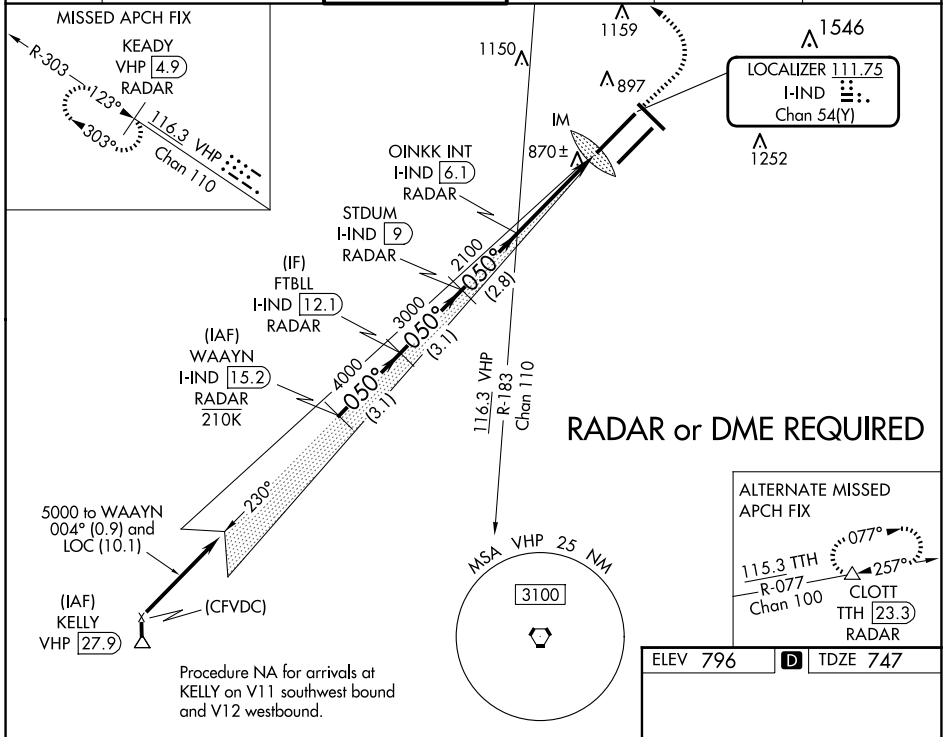
LOC/DME I-IND <b>111.75</b> Chan <b>54</b> (Y)	APP CRS <b>050°</b>	Rwy Idg <b>11200</b> TDZE <b>747</b> Apt Elev <b>796</b>
--	------------------------	--

# ILS RWY 5L (CAT II & III)

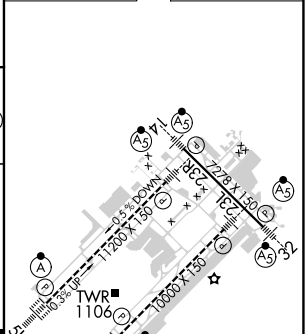
INDIANAPOLIS INTL (IND)

<b>⚠</b> Simultaneous approach authorized. CAT III: Localizer not suitable for electronic rollout guidance. DME or RADAR required.	ALSF-2 	MISSED APPROACH: Climb to 1700 then climbing left turn to 3000 direct VHP VORTAC then on VHP VORTAC R-303 to KEADY/VHP 4.9 DME/RADAR and hold.
---	------------	--

D-ATIS <b>134.25</b>	INDIANAPOLIS APP CON <b>128.175 317.8</b>	INDY TOWER <b>120.9 251.1</b>	GND CON <b>121.9</b>	CLNC DEL <b>128.75 251.1</b>	CPDLC
-------------------------	--	----------------------------------	-------------------------	---------------------------------	-------



ELEV 796	<b>D</b>	TDZE 747
----------	----------	----------



CATEGORY	A	B	C	D
S-ILS 5L	CAT II RA 113/12 100 DA 847			
S-ILS 5L	CAT III RVR 07			

**CATEGORY II & III ILS - SPECIAL AIRCREW & AIRCRAFT CERTIFICATION REQUIRED**

HIRL all Rwws  
TDZ/CL Rwws 5L and 5R

EC-2, 17 APR 2025 to 15 MAY 2025

EC-2, 17 APR 2025 to 15 MAY 2025