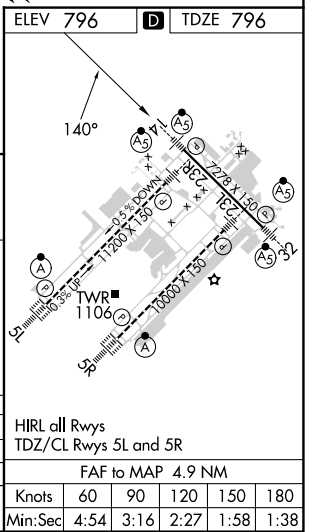
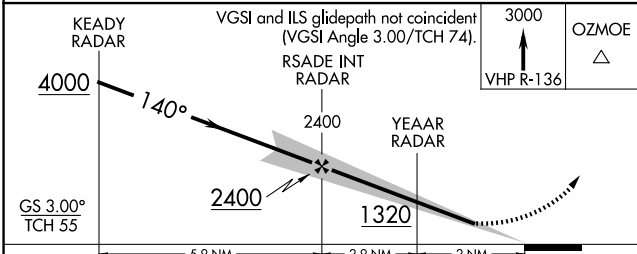
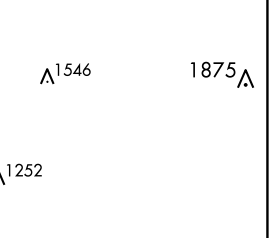
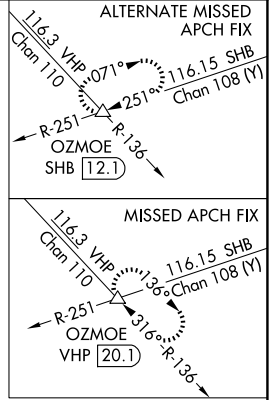
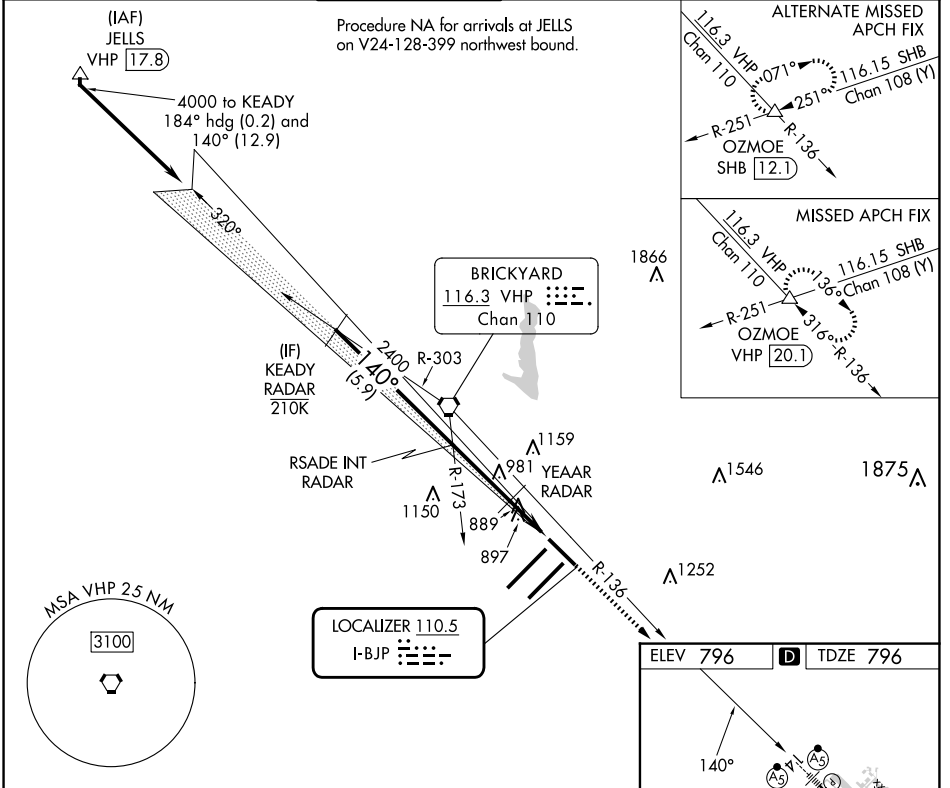


LOC I-BJP <b>110.5</b>	APP CRS <b>140°</b>	Rwy Idg <b>7278</b> TDZE <b>796</b> Apt Elev <b>796</b>
---------------------------	------------------------	---

# ILS or LOC RWY 14

INDIANAPOLIS INTL (IND)

RADAR required.		MALSR	MISSED APPROACH: Climb to 3000 on VHP R-136 to OZMOE INT/VHP 20.1 DME and hold.		
<p>▼ For inop ALS, increase S-LOC 14 Cat C and D visibility to RVR 5500.</p> <p>▲ *RVR 1800 authorized with use of FD or AP or HUD to DA.</p>					
D-ATIS <b>134.25</b>	INDIANAPOLIS APP CON <b>128.175 317.8</b>	INDY TOWER <b>120.9 251.1</b>	GND CON <b>121.9</b>	CLNC DEL <b>128.75 251.1</b>	CPDLC



CATEGORY	A	B	C	D
S-ILS 14 *	996/24 200 (200-½)			
S-LOC 14	1140/24	344 (400-½)	1140/30	344 (400-¾)
CIRCLING	1420-1 624 (700-1)		1420-1¾ 624 (700-1¾)	1560-2½ 764 (800-2½)

HIRL all Rwys		TDZ/CL Rwys 5L and 5R	
FAF to MAP 4.9 NM			
Knots	60	90	120 150 180
Min:Sec	4:54	3:16	2:27 1:58 1:38

EC-2, 17 APR 2025 to 15 MAY 2025

EC-2, 17 APR 2025 to 15 MAY 2025