

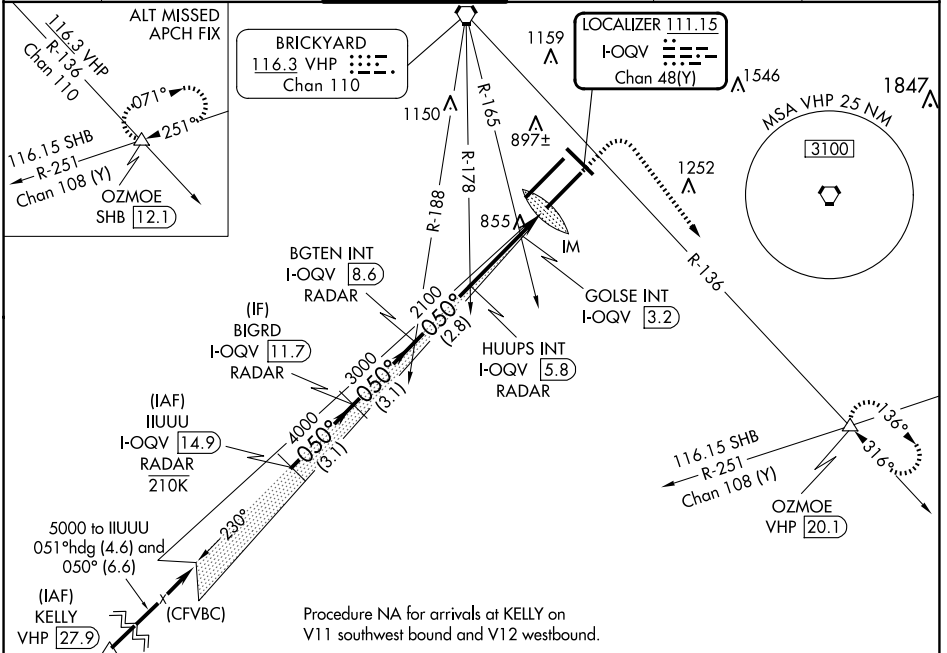
LOC/DME I-QQV <b>111.15</b> Chan 48(Y)	APP CRS <b>050°</b>	Rwy ldg <b>10000</b> TDZE <b>791</b> Apt Elev <b>796</b>
--	------------------------	--

# ILS or LOC RWY 5R

INDIANAPOLIS INTL (IND)

<b>⚠</b> DME or RADAR required. Simultaneous approach authorized.	<b>ALSF-2</b> <b>(A)</b>	MISSED APPROACH: Climb to 1500 then climbing right turn to 3000 on heading 148° and on VHP VORTAC R-136 to OZMOE INT/VHP 20.1 DME and hold.
--	-----------------------------	---

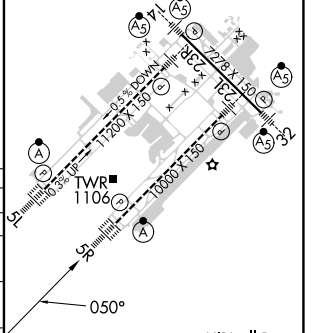
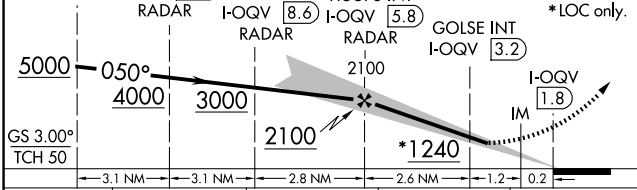
D-ATIS <b>134.25</b>	INDIANAPOLIS APP CON <b>128.175 317.8</b>	INDY TOWER <b>120.9 251.1</b>	GND CON <b>121.9</b>	CLNC DEL <b>128.75 251.1</b>	CPDLC
-------------------------	--	----------------------------------	-------------------------	---------------------------------	-------



EC-2, 17 APR 2025 to 15 MAY 2025

EC-2, 17 APR 2025 to 15 MAY 2025

IIUUU I-QQV 14.9 RADAR	BIGRD I-QQV 11.7 RADAR	BGTEN INT I-QQV 8.6 RADAR	HUUPS INT I-QQV 5.8 RADAR	GOLSE INT I-QQV 3.2	OZMOE VHP R-136	ELEV 796	TDZE 791
------------------------	------------------------	---------------------------	---------------------------	---------------------	-----------------	----------	----------



CATEGORY	A	B	C	D
S-ILS 5R	991/18 200 (200-½)			
S-LOC 5R	1240/24	449 (500-½)	1240/45	449 (500-¾)
<b>C</b> CIRCLING	1420-1	624 (700-1)	1420-1¾ 624 (700-1¾)	1560-2½ 764 (800-2½)
GOLSE FIX MINIMUMS (DUAL VOR RECEIVERS or DME REQUIRED)				
S-LOC 5R	1160/24	369 (400-½)	1160/35	369 (400-¾)
<b>C</b> CIRCLING	1420-1	624 (700-1)	1420-1¾ 624 (700-1¾)	1560-2½ 764 (800-2½)

Knots				
45	60	75	90	105
Min:Sec				
5:20	4:00	3:12	2:40	2:17