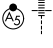


RNAV (RNP) Z RWY 23R

INDIANAPOLIS INTL (IND)

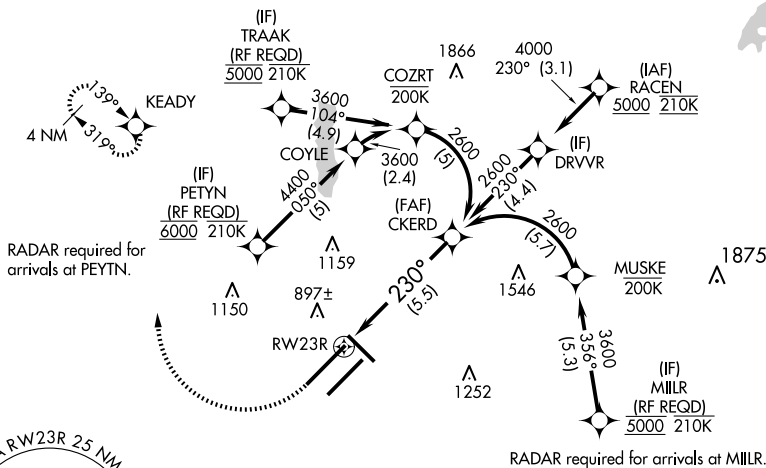
APP CRS 230°	Rwy Idg 11200
	TDZE 783
	Apt Elev 796

▽ For uncompensated Baro-VNAV systems, procedure NA below -18°C (0°F) or above 54°C (130°F). GPS Required. For inoperative ALS, increase RNP 0.15 all Cats visibility to RVR 6000 and increase RNP 0.30 all Cats visibility to 1 3/8 SM. Simultaneous approach authorized.

MALSR

MISSED APPROACH:
 Climb to 1200 then climbing right turn to 3000 direct KEADY and hold.

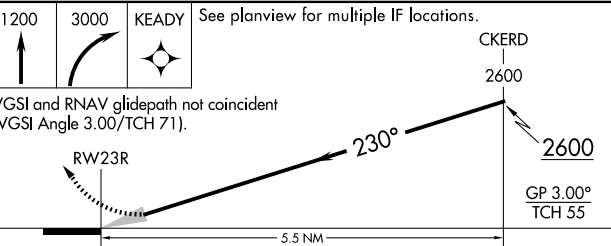
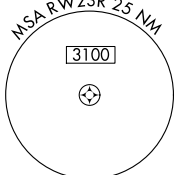
D-ATIS 134,25	INDIANAPOLIS APP CON 128.175 317.8	INDY TOWER 120.9 251.1	GND CON 121.9	CLNC DEL 128.75 251.1	CPDLC
-------------------------	--	----------------------------------	-------------------------	---------------------------------	-------

RADAR required for arrivals at TRAAK.



EC-2, 17 APR 2025 to 15 MAY 2025

EC-2, 17 APR 2025 to 15 MAY 2025



ELEV 796	D TDZE 783
----------	-------------------

CATEGORY	A	B	C	D
RNP 0.15 DA		1147/40	364 (400-3/4)	
RNP 0.30 DA		1206/50	423 (500-1)	

AUTHORIZATION REQUIRED

HIRL all Rwys
 TDZ/CL Rws 5L and 5R