

APP CRS	Rwy Idg	10000
050°	TDZE	791
	Apt Elev	796

RNAV (RNP) Z RWY 5R

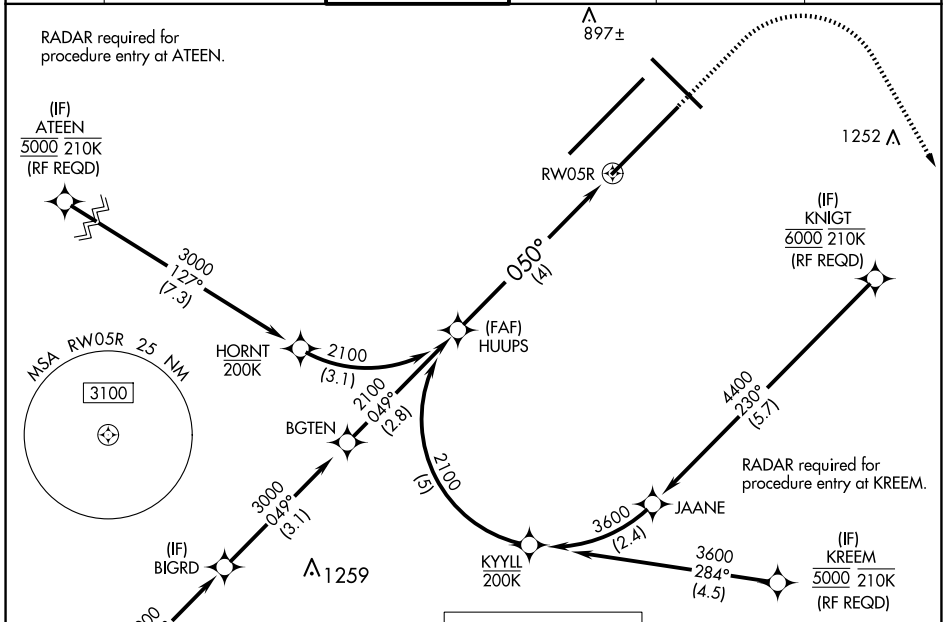
INDIANAPOLIS INTL (IND)

▽ For uncompensated Baro-VNAV systems, procedure NA below -18°C (0°F) or above 54°C (130°F). GPS required. Simultaneous approach authorized, for arrivals from IUUU only.

ALSF-2

MISSED APPROACH: Climb to 1500, then climbing right turn to 3000 direct OZMOE and hold.

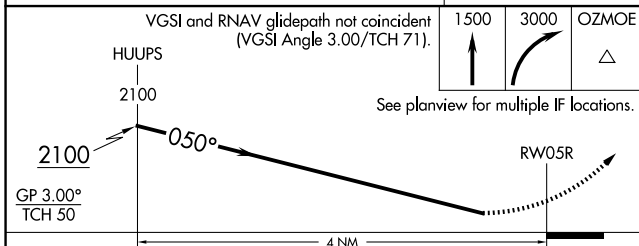
D-ATIS	INDIANAPOLIS APP CON	INDY TOWER	GND CON	CLNC DEL	CPDLC
134.25	128.175 317.8	120.9 251.1	121.9	128.75 251.1	



EC-2, 17 APR 2025 to 15 MAY 2025

EC-2, 17 APR 2025 to 15 MAY 2025

ELEV 796	D	TDZE 791
----------	----------	----------



CATEGORY	A	B	C	D
RNP 0.11 DA		1174/45	383 (400-7/8)	
RNP 0.30 DA		1271/60	480 (500-1 1/4)	

AUTHORIZATION REQUIRED

