

LOC/DME I-LRD <b>111.9</b> Chan 56	APP CRS <b>358°</b>	Rwy Idg <b>8623</b> TDZE <b>497</b> Apt Elev <b>508</b>
--	------------------------	--

# LOC BC RWY 36L

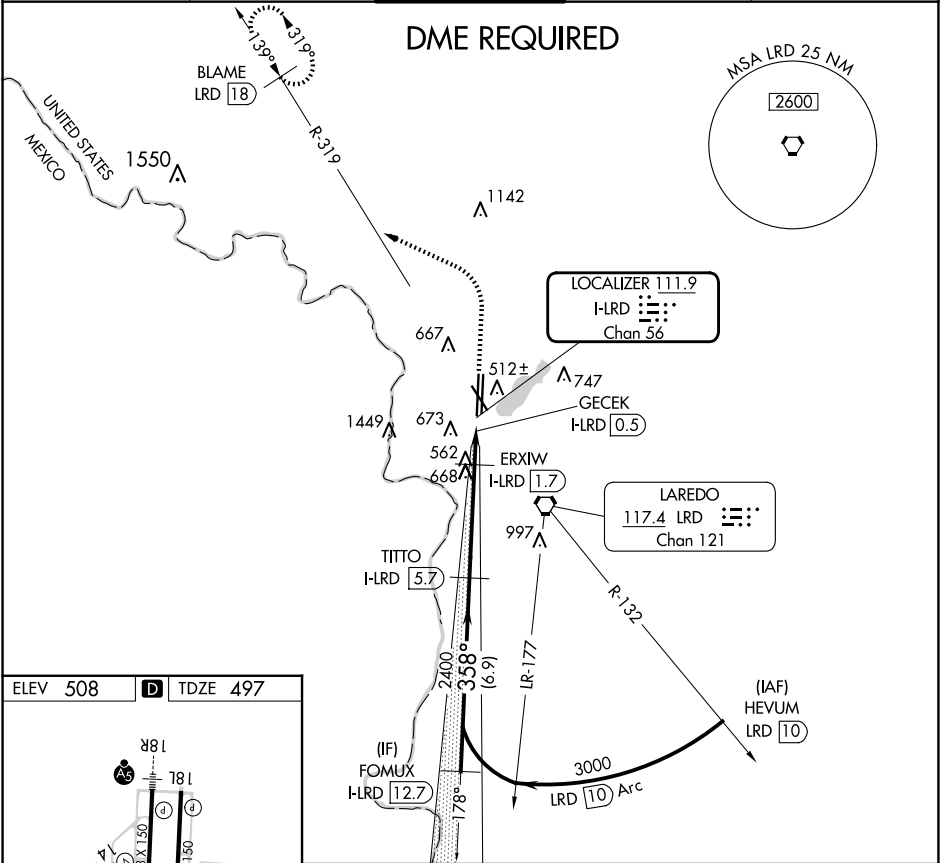
LAREDO INTL (L.R.D)

**▼** Circling NA west of Rwys 14 and 36L.  
**▲** DME required.

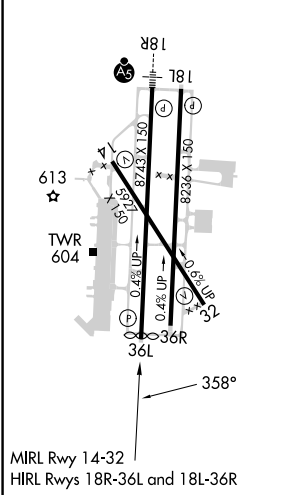
MISSED APPROACH: Climb to 1100 then climbing left turn to 2600 on heading 290° and on LRD VORTAC R-319 to BLAME/LRD 18 DME and hold.

ATIS <b>125.775</b>	HOUSTON CENTER <b>127.8 307.2</b>	LAREDO TOWER ★ <b>120.1(CTAF) 0 257.9</b>	GND CON <b>121.8</b>	UNICOM <b>122.95</b>
------------------------	--------------------------------------	--	-------------------------	-------------------------

## DME REQUIRED



ELEV 508	<b>D</b>	TDZE 497
----------	----------	----------



MIRL Rwy 14-32  
HIRL Rwys 18R-36L and 18L-36R

FOMUX I-LRD 12.7	Use I-LRD DME when on the localizer course.	1100	2600	LRD R-319	BLAME LRD 18
3000	358°	TITTO I-LRD 5.7	3.00° TCH 50	ERXIW I-LRD 1.7	GECEK I-LRD 0.5
Disregard glide slope indications.		2400	1100		
← 6.9 NM		← 4.1 NM		← 1.2 NM	
← 0.6					
CATEGORY	A	B	C	D	E
S-LOC 36L	820-1 323 (400-1)				
<b>C</b> CIRCLING	940-1 432 (500-1)	980-1 472 (500-1)	1100-1½ 592 (600-1½)	1200-2¼ 692 (700-2¼)	1200-2½ 692 (700-2½)