

WAAS Ch 77899 W18B	APP CRS 178°	Rwy Idg TDZE Apt Elev	8236 499 508
--	------------------------	-----------------------------	---

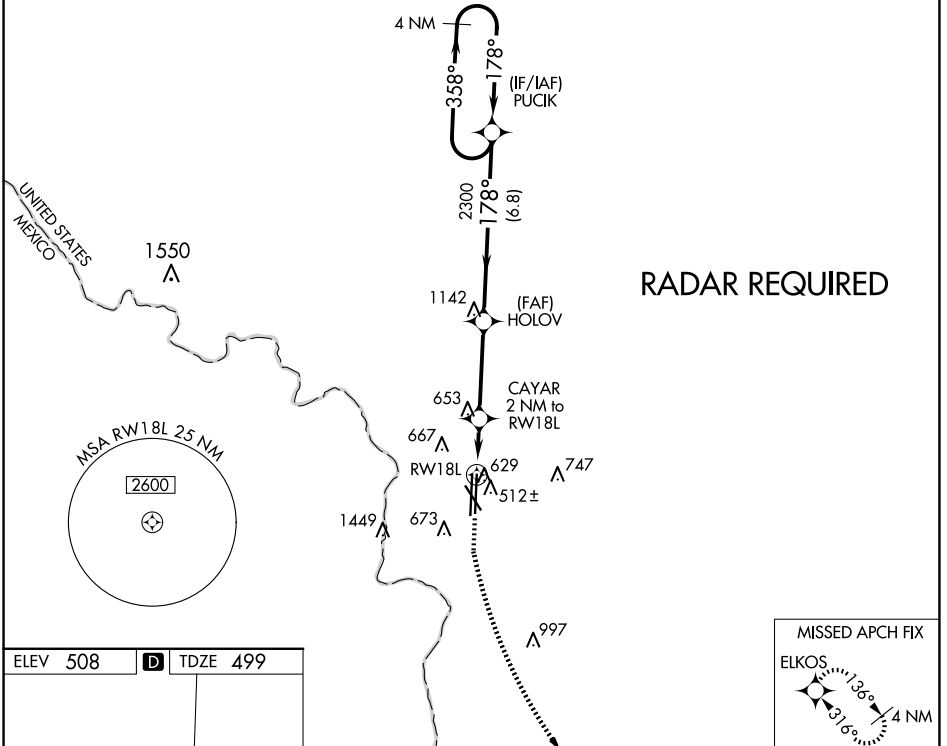
RNAV (GPS) RWY 18L

LAREDO INTL (L.R.D)

⚠ For uncompensated Baro-VNAV systems, LNAV/VNAV NA below 1°C (34°F) or above 54°C (130°F).
 Circling NA west of Rwy 14 and 36L. DME/DME RNP-0.3 NA.

MISSED APPROACH: Climb to 2500 then climbing left turn to 2500 direct ELKOS and hold.

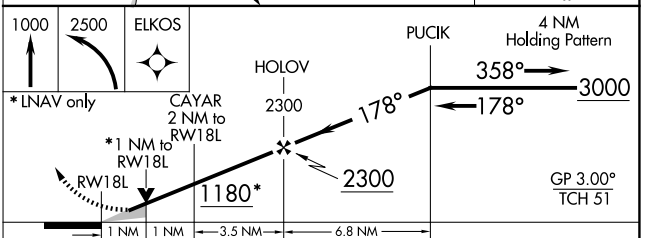
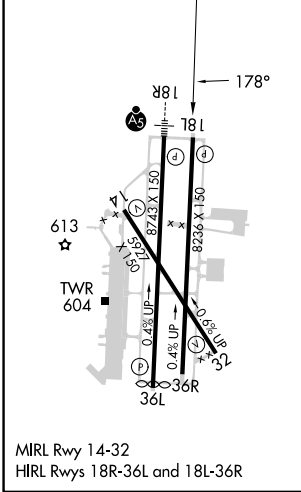
ATIS 125.775	HOUSTON CENTER 127.8 307.2	LAREDO TOWER * 120.1(CTAF) 257.9	GND CON 121.8	UNICOM 122.95
------------------------	--------------------------------------	--	-------------------------	-------------------------



SC-3, 17 APR 2025 to 15 MAY 2025

SC-3, 17 APR 2025 to 15 MAY 2025

ELEV 508	D	TDZE 499
----------	----------	----------



CATEGORY	A	B	C	D	E
LPV DA	699- ³ / ₈		200 (200- ³ / ₈)		
LNAV/VNAV DA	810- ⁷ / ₈		311 (400- ⁷ / ₈)		
LNAV MDA	880-1	381 (400-1)	880- ¹ / ₈	381 (400- ¹ / ₈)	
C CIRCLING	940-1 432 (500-1)	980-1 472 (500-1)	1100- ¹ / ₂ 592 (600- ¹ / ₂)	1200- ² / ₄ 692 (700- ² / ₄)	1200- ² / ₂ 692 (700- ² / ₂)