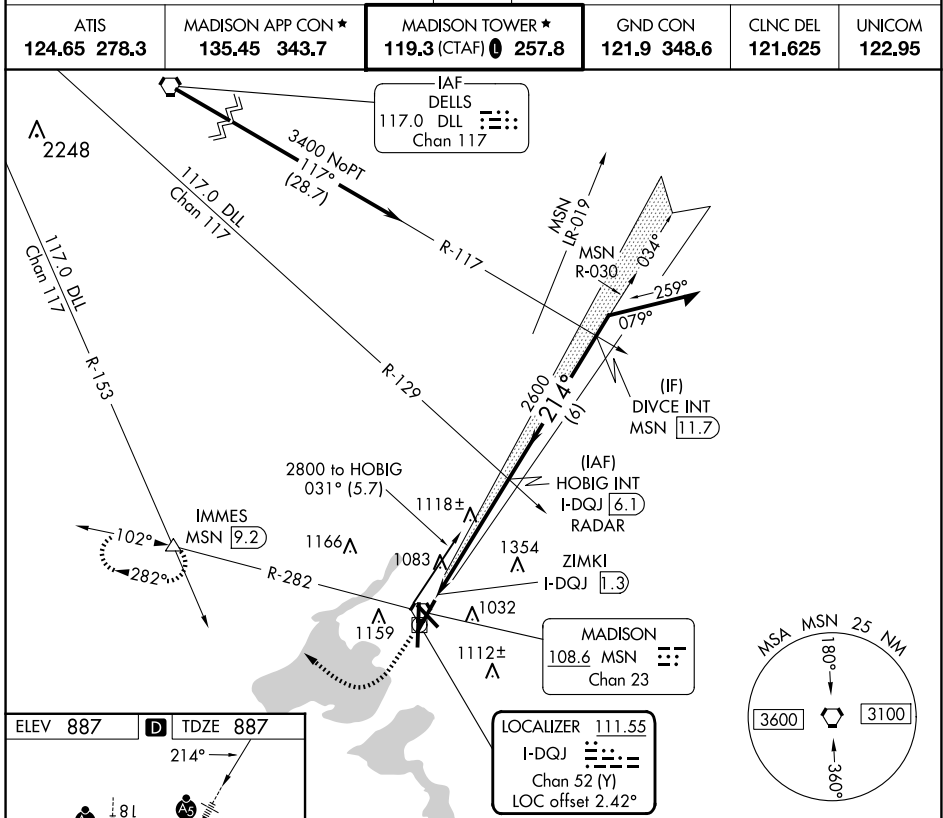


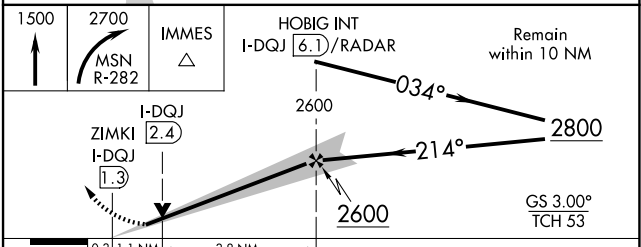
LOC/DME I-DQJ 111.55 Chan 52 (Y)	APP CRS 214°	Rwy Idg TDZE Apt Elev	7015 887 887
--	------------------------	-----------------------------	---

ILS or LOC RWY 21
DANE COUNTY RGNL/TRUAX FLD (MSN)

<p>For inop ALS, increase S-LOC 21 Cat C/D visibility to 1/8 mile.</p>	<p>MALS R</p>	<p>MISSED APPROACH: Climb to 1500 then climbing right turn to 2700 on MSN VORTAC R-282 to IMMES INT/MSN VORTAC 9.2 DME and hold.</p>			
			<p>ATIS 124.65 278.3</p>	<p>MADISON APP CON * 135.45 343.7</p>	<p>MADISON TOWER * 119.3 (CTAF) 257.8</p>



ELEV 887	D	TDZE 887			
<p>TWR 964</p> <p>REIL Rwy 3, 14 and 32 HIRL all Rwys</p> <p>FAF to MAP 4.8 NM</p>					
Knots	60	90	120	150	180
Min:Sec	4:48	3:12	2:24	1:55	1:36



CATEGORY	A	B	C	D
S-ILS 21	1137-1/2 250 (300-1/2)			
S-LOC 21	1380-1/2	493 (500-1/2)	1380-1	493 (500-1)
CIRCLING	1420-1 533 (600-1)	1460-1 573 (600-1)	1460-1 1/2 573 (600-1 1/2)	1700-2 3/4 813 (900-2 3/4)

EC-3, 17 APR 2025 to 15 MAY 2025

EC-3, 17 APR 2025 to 15 MAY 2025