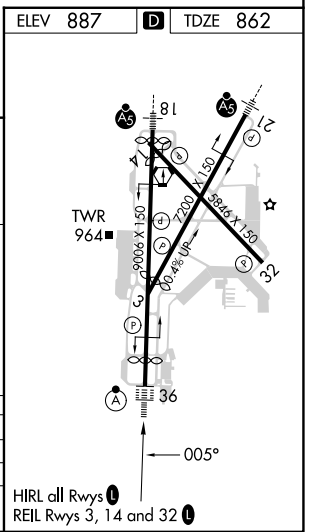
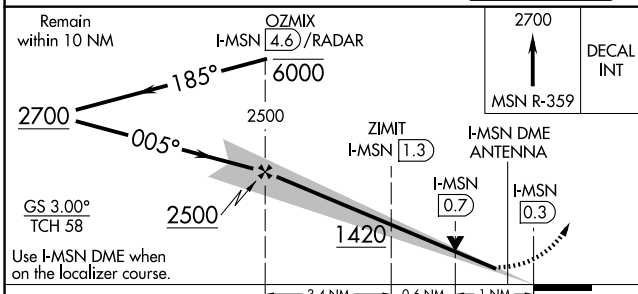
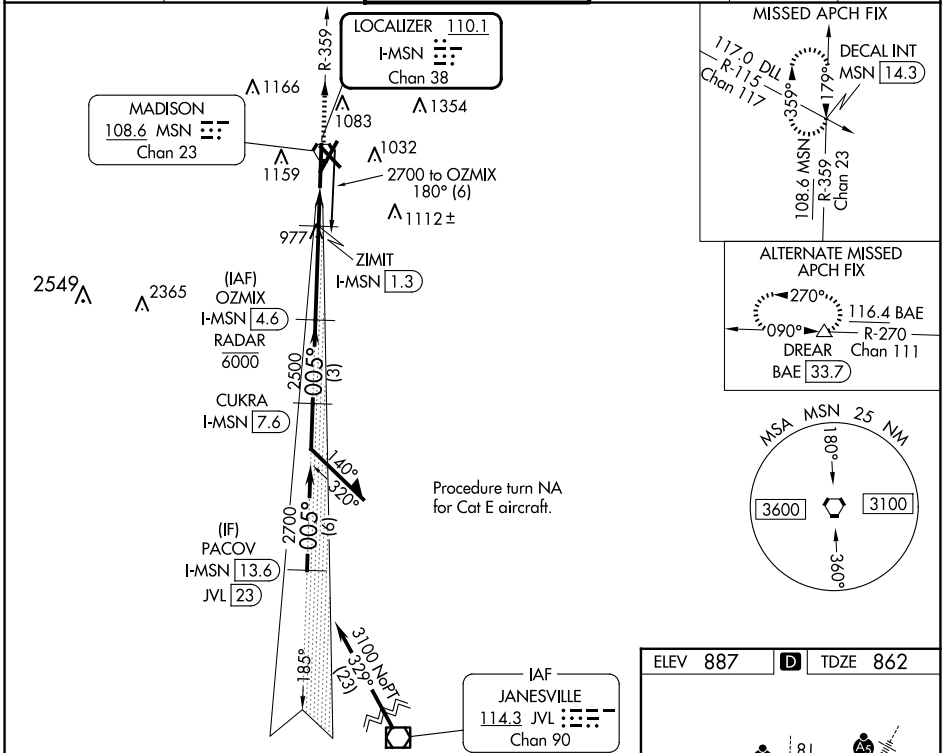


LOC/DME I-MSN 110.1 Chan 38	APP CRS 005°	Rwy Idg TDZE 862 Apt Elev 887
---	------------------------	---

ILS or LOC/DME RWY 36

DANE COUNTY RGNL/TRUAX FLD (MSN)

DME or RADAR required.		ALSIF-2		MISSED APPROACH: Climb to 2700 on MSN VORTAC R-359 to DECAL INT/MSN 14.3 DME and hold.	
⚠ For inop ALS, increase S-ILS 36 Cat E visibility to RVR 4000 and S-LOC 36 Cat C/D/E visibility to RVR 5500. **RVR 1800 authorized with use of FD or AP or HUD to DA.		ATIS 124.65 278.3		MADISON APP CON * 135.45 343.7	
MADISON TOWER * 119.3 (CTAF) 0 257.8		GND CON 121.9 348.6		CLNC DEL 121.625	
				UNICOM 122.95	



CATEGORY	A	B	C	D	E
S-ILS 36 **	1062/24 200 (200-½)				
S-LOC 36	1240/24	378 (400-½)	1240/35	378 (400-¾)	
CIRCLING	1420-1 533 (600-1)	1460-1 573 (600-1)	1460-1½ 573 (600-1½)	1700-2¾ 813 (900-¾)	1700-3 813 (900-3)

EC-3, 17 APR 2025 to 15 MAY 2025

EC-3, 17 APR 2025 to 15 MAY 2025