

WAAS CH <b>42829</b> <b>W21A</b>	APP CRS <b>212°</b>	Rwy Idg TDZE Apt Elev	<b>7015</b> <b>887</b> <b>887</b>
--	------------------------	-----------------------------	---

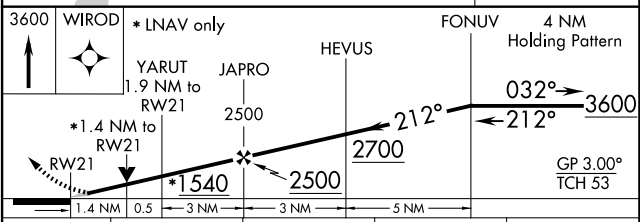
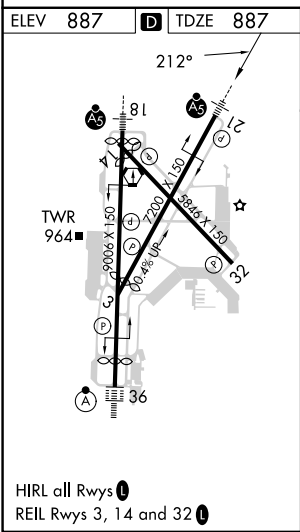
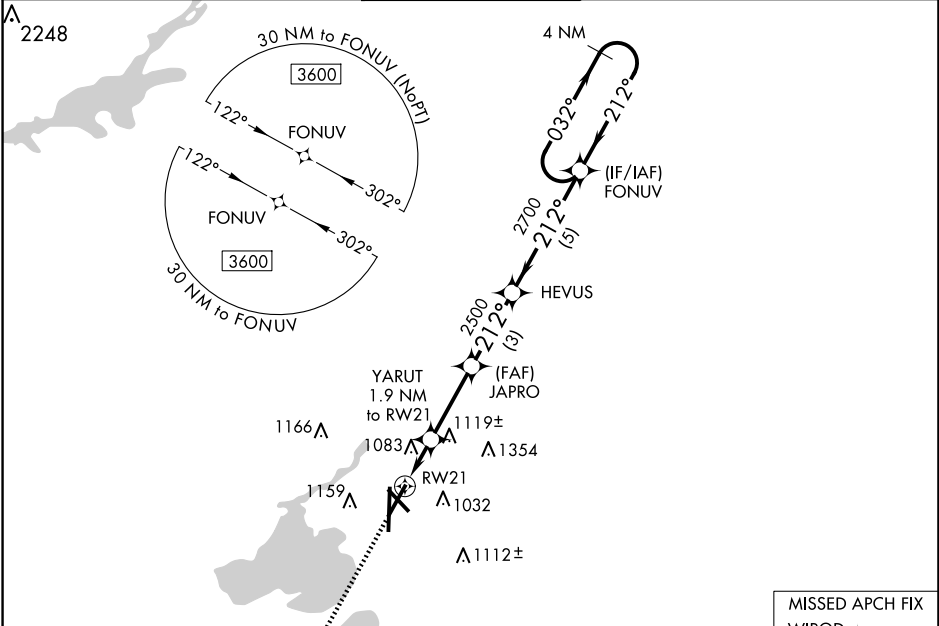
# RNAV (GPS) RWY 21

DANE COUNTY RGNL/TRUAX FLD (MSN)

**⚠** For uncompensated Baro-VNAV systems, LNAV/VNAV NA below -20°C (-4°F) or above 54°C (130°F). DME/DME RNP-0.3 NA. For inop MALS, increase LNAV/VNAV all Cats visibility to 1½ mile and LNAV Cat C/D visibility to 1⅓ mile.

**MALS**  
 MISSED APPROACH: Climb to 3600 direct WIROD and hold.

ATIS <b>124.65 278.3</b>	MADISON APP CON * <b>135.45 343.7</b>	MADISON TOWER * <b>119.3 (CTAF) 0 257.8</b>	GND CON <b>121.9 348.6</b>	CLNC DEL <b>121.625</b>	UNICOM <b>122.95</b>
-----------------------------	--	--	-------------------------------	----------------------------	-------------------------



CATEGORY	A	B	C	D
LPV DA	1087-½		200 (200-½)	
LNAV/VNAV DA	1412-1⅓		525 (600-1⅓)	
LNAV MDA	1380-½ 493 (500-½)		1380-1 493 (500-1)	
<b>C</b> CIRCLING	1420-1 533 (600-1)	1460-1 573 (600-1)	1460-1½ 573 (600-1½)	1700-2¾ 813 (900-2¾)

EC-3, 17 APR 2025 to 15 MAY 2025

EC-3, 17 APR 2025 to 15 MAY 2025