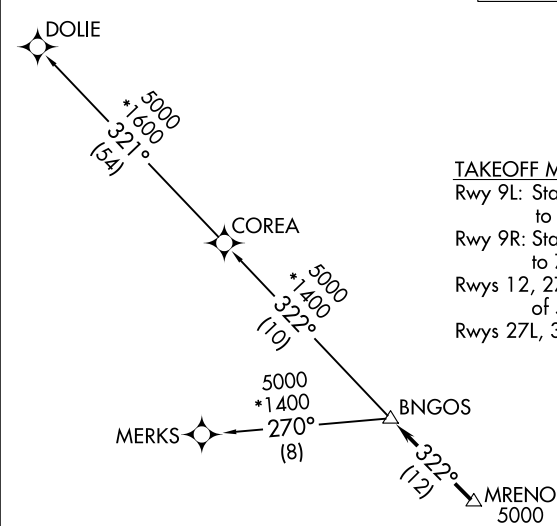


| | | |
|----------------------------|----------------------------------|--|
| RNAV-1 DME/DME/IRU or GPS. | TOP ALTITUDE: ASSIGNED BY ATC | MIAMI DEP CON 119.45 290.325 |
| RADAR required. | | ATIS 125.9 CLNC DEL 119.2 GND CON 120.025 OPA LOCKA TOWER* 134.675 (CTAF) |



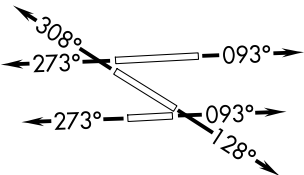
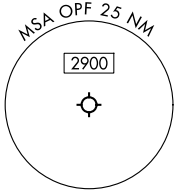
TAKEOFF MINIMUMS

Rwy 9L: Standard with minimum climb of 500’/NM to 1000.

Rwy 9R: Standard with minimum climb of 500’/NM to 700.

Rwys 12, 27R: Standard with minimum climb of 500’/NM to 600.

Rwys 27L, 30: Standard.



NOTE: Jet aircraft only.

NOTE: Accelerate to 250K until leaving 10000, if unable, advise ATC.

NOTE: MERKS Transition ATC assigned only except aircraft landing: MKY, RSW, APF, PGD and FMY.

NOTE: Chart not to scale.

| |
|---|
| DEPARTURE ROUTE DESCRIPTION |
| <p>TAKEOFF RUNWAYS 9L/R: Climb on heading 093° or as assigned by ATC for RADAR vectors to cross MRENO at or above 5000, thence. . .</p> <p>TAKEOFF RUNWAY 12: Climb on heading 128° or as assigned by ATC for RADAR vectors to cross MRENO at or above 5000, thence. . .</p> <p>TAKEOFF RUNWAYS 27L/R: Climb on heading 273° or as assigned by ATC for RADAR vectors to cross MRENO at or above 5000, thence. . .</p> <p>TAKEOFF RUNWAY 30: Climb on heading 308° or as assigned by ATC for RADAR vectors to cross MRENO at or above 5000, thence. . .</p> <p>. . .on track 322° to BNGOS, then on assigned transition, maintain ATC assigned altitude, expect filed altitude within 10 minutes after departure.</p> <p>COREA TRANSITION (BNGOS4.COREA)</p> <p>DOLIE TRANSITION (BNGOS4.DOLIE)</p> <p>MERKS TRANSITION (BNGOS4.MERKS)</p> |