

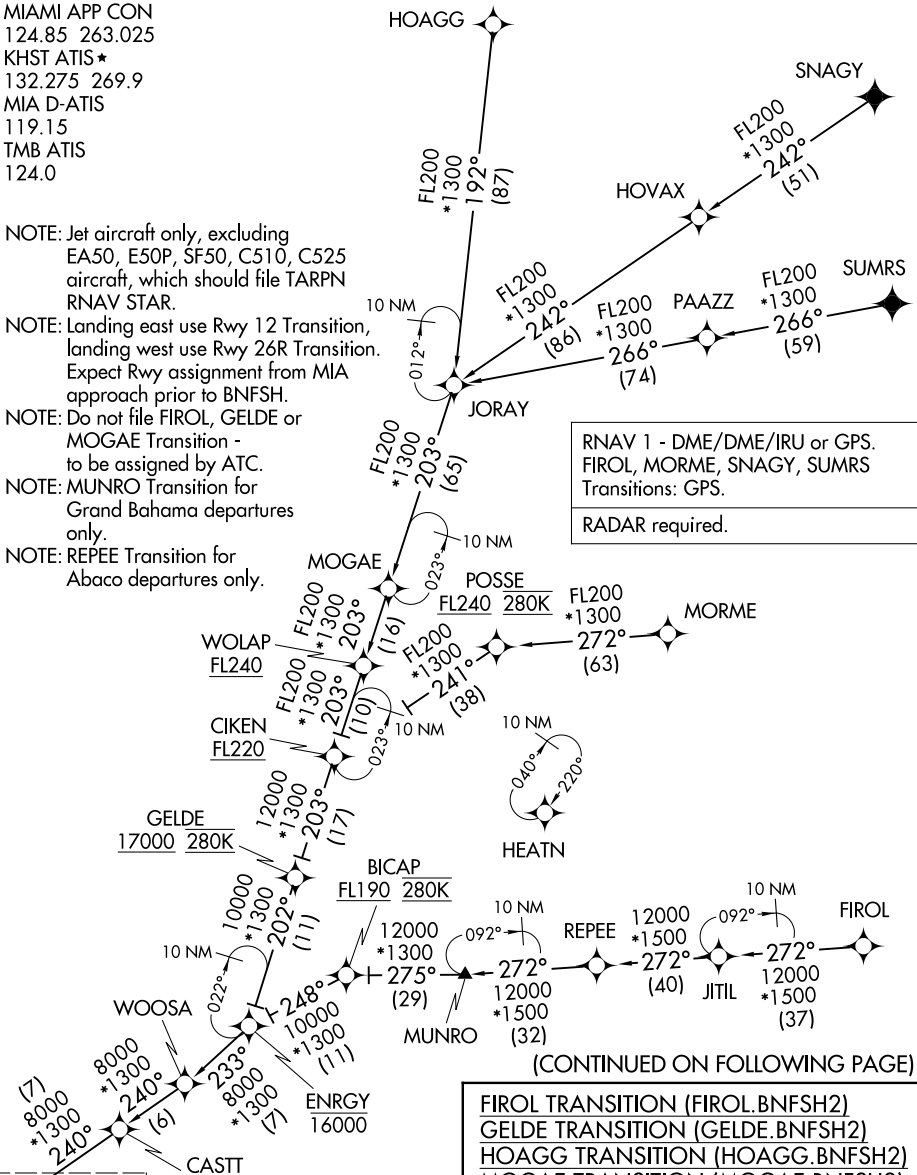
BNFSH TWO ARRIVAL(RNAV) Transition Routes

MIAMI, FLORIDA

MIAMI APP CON
 124.85 263.025
 KHST ATIS*
 132.275 269.9
 MIA D-ATIS
 119.15
 TMB ATIS
 124.0

- NOTE: Jet aircraft only, excluding EA50, E50P, SF50, C510, C525 aircraft, which should file TARPN RNAV STAR.
- NOTE: Landing east use Rwy 12 Transition, landing west use Rwy 26R Transition. Expect Rwy assignment from MIA approach prior to BNFSH.
- NOTE: Do not file FIROL, GELDE or MOGAE Transition - to be assigned by ATC.
- NOTE: MUNRO Transition for Grand Bahama departures only.
- NOTE: REPEE Transition for Abaco departures only.

RNAV 1 - DME/DME/IRU or GPS.
 FIROL, MORME, SNAGY, SUMRS
 Transitions: GPS.
 RADAR required.



(CONTINUED ON FOLLOWING PAGE)

- FIROL TRANSITION (FIROL.BNFSH2)
- GELDE TRANSITION (GELDE.BNFSH2)
- HOAGG TRANSITION (HOAGG.BNFSH2)
- MOGAE TRANSITION (MOGAE.BNFSH2)
- MORME TRANSITION (MORME.BNFSH2)
- MUNRO TRANSITION (MUNRO.BNFSH2)
- REPEE TRANSITION (REPEE.BNFSH2)
- SNAGY TRANSITION (SNAGY.BNFSH2)
- SUMRS TRANSITION (SUMRS.BNFSH2)

BNFSH
 11000
 See following page
 for arrival routes.

NOTE: Chart not to scale.

SE-3, 17 APR 2025 to 15 MAY 2025

SE-3, 17 APR 2025 to 15 MAY 2025

BNFSH TWO ARRIVAL(RNAV) Transition Routes

MIAMI, FLORIDA