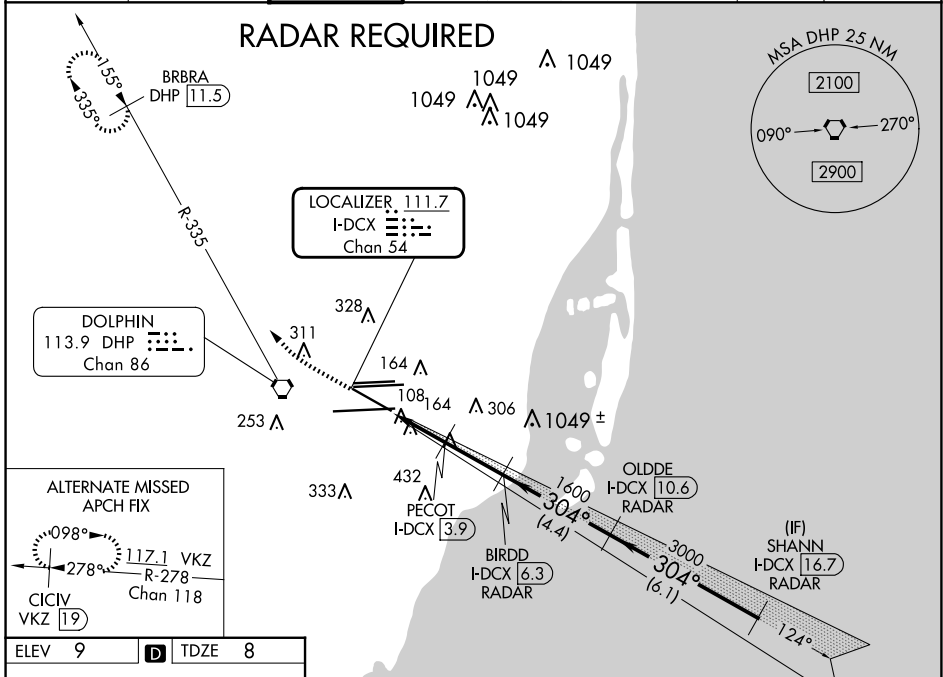


LOC/DME I-DCX 111.7 Chan 54	APP CRS 304°	Rwy ldg TDZE Apt Elev	7913 8 9
---	------------------------	-----------------------------	-------------------------------------

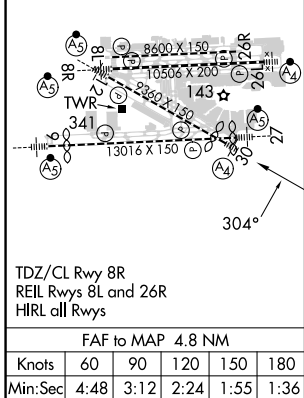
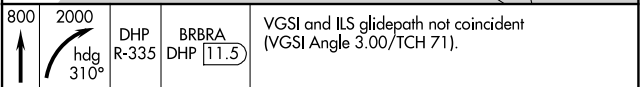
ILS or LOC RWY 30

MIAMI INTL (MIA)

D-ATIS ARR 119.15 DEP 133.675	MIAMI APP CON 124.85 322.3	MIAMI TOWER 118.3 256.9	GND CON 121.8 (8L/8R/12/26L/26R) 127.5 (9/27/30)	MALS 	MISSED APPROACH: Climb to 800 then climbing right turn to 2000 on heading 310° and DHP VORTAC R-335 to BRBRA/11.5 DME and hold.	CLNC DEL 135.35	CPDLC



ELEV 9	D	TDZE 8
--------	----------	--------



*LOC only.

I-DCX 1.5	*I-DCX 2.7	PECOT I-DCX 3.9	BIRDD I-DCX 6.3	OLDDE I-DCX 10.6	SHANN I-DCX 16.7
1.2 NM	1.2 NM	2.4 NM	4.4 NM	6.1 NM	
CATEGORY A		CATEGORY B		CATEGORY C	
S-ILS 30		258/40		250 (300-¾)	
S-LOC 30		460/40		452 (500-¾)	
		460/60		452 (500-1¼)	
		460-1½		452 (500-1½)	

GS 3.00° TCH 51

SE-3, 17 APR 2025 to 15 MAY 2025

SE-3, 17 APR 2025 to 15 MAY 2025