

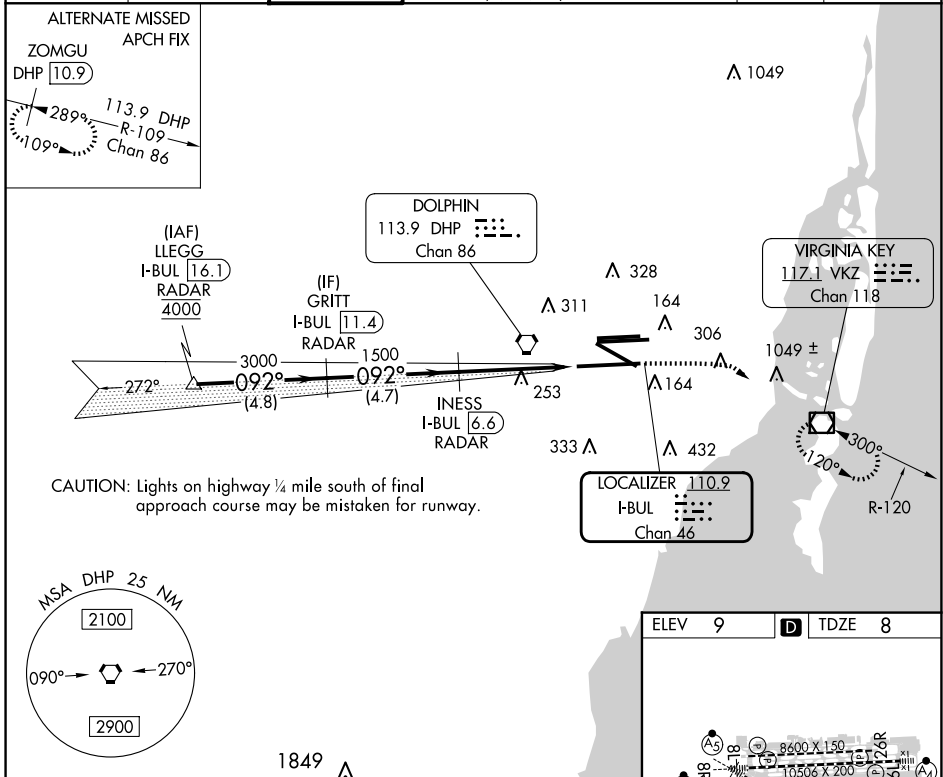
LOC/DME I-BUL 110.9 Chan 46	APP CRS 092°	Rwy Idg 11397 TDZE 8 Apt Elev 9
---	------------------------	--

ILS or LOC RWY 9

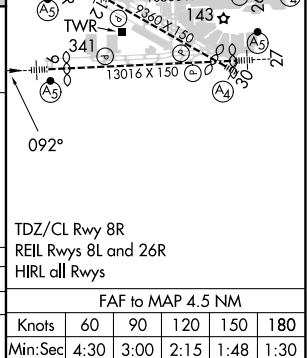
MIAMI INTL (MIA)

RADAR required for procedure entry. DME required for LOC only.		MALSR 	MISSED APPROACH: Climb to 800 then climbing right turn to 3000 direct VKZ VOR/DME and hold, continue climb-in-hold to 3000.
Autopilot coupled approach NA. Simultaneous approach authorized. For inop ALS, increase S-ILS 9 Cat E visibility to RVR 4000 and S-LOC 9 Cat C/D visibility to 1 3/8 SM. *RVR 1800 authorized with use of FD or HUD to DA.			

D-ATIS ARR 119.15 DEP 133.675	MIAMI APP CON 124.85 322.3	MIAMI TOWER 118.3 256.9	GND CON 121.8 (8L/8R/12/26L/26R) 127.5 (9/27/30)	348.6	CLNC DEL 135.35	CPDLC
---	--------------------------------------	-----------------------------------	--	--------------	---------------------------	-------



LLEGG I-BUL 16.1 RADAR		GRITT I-BUL 11.4 RADAR		INESS I-BUL 6.6 RADAR		I-BUL 3.4		I-BUL 2.1		
4000		3000		1500		1500		1500		
092°		092°		092°		092°		092°		
4.8 NM		4.7 NM		3.3 NM		1.3 NM				
CATEGORY	A	B	C	D	E					
S-ILS 9*	208/24				200 (200-1/2)					
S-LOC 9	480/24	472 (500-1/2)		480/50	472 (500-1)		NA			



SE-3, 17 APR 2025 to 15 MAY 2025

SE-3, 17 APR 2025 to 15 MAY 2025