

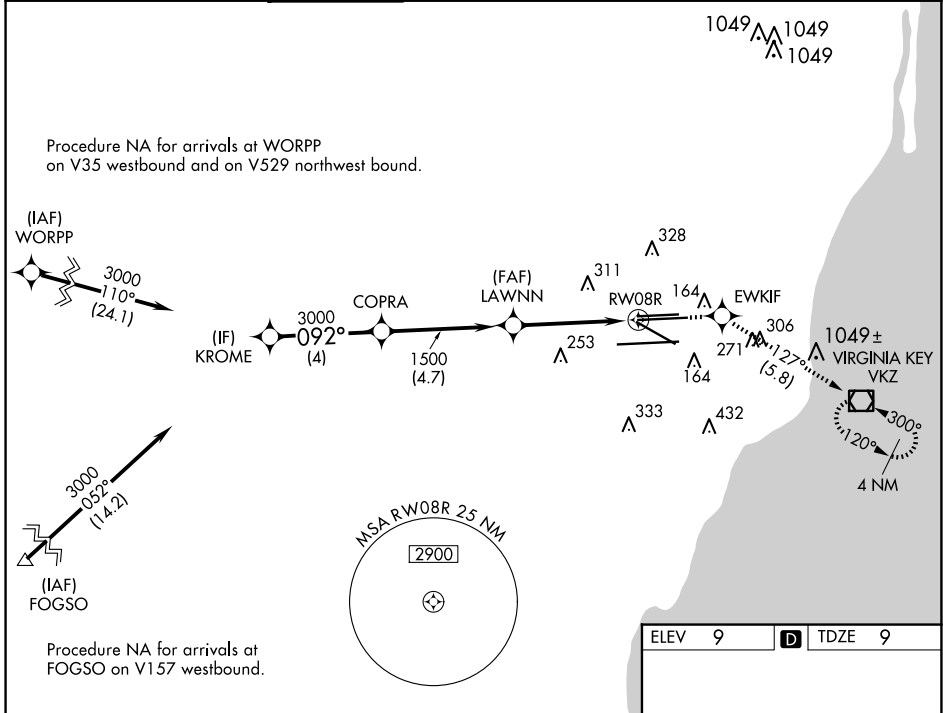
WAAS CH 97404 W08B	APP CRS 092°	Rwy Idg 10506 TDZE 9 Apt Elev 9
--	------------------------	--

RNAV (GPS) Z RWY 8R

MIAMI INTL (MIA)

RNP APCH-GPS.	MALSR	MISSED APPROACH: Climb to 3000 direct EWKIF and on track 127° to VKZ VOR/DME and hold, continue climb in-hold to 3000.
<p>▼ Rwy 8R helicopter visibility reduction below RVR 4000 NA. For uncompensated Baro-VNAV systems, LNAV/VNAV NA below 8°C or above 54°C. For inop ALS, increase LPV all Cats visibility to RVR 4500 and LNAV Cats A and B visibility to RVR 5500.</p>		

D-ATIS	MIAMI APP CON	MIAMI TOWER	GND CON	CLNC DEL	CPDLC
ARR 119.15 DEP 133.675	124.85 322.3	118.3 256.9	121.8 (8L/8R/12/26L/26R) 127.5 (9/27/30)	348.6	



SE-3, 17 APR 2025 to 15 MAY 2025

SE-3, 17 APR 2025 to 15 MAY 2025

ELEV 9	TDZE 9
--------	--------

VGSI and RNAV glidepath not coincident (VGSI Angle 3.00/TCH 77).

KROME	COPRA	LAWNN	RW08R
3000	3000	1500	1.6 NM to RW08R
GP 3.00° TCH 51	092°	092°	127°
4 NM	4.7 NM	2.9 NM	1.6 NM
CATEGORY A	B	C	D
LPV DA	277/40 268 (300-¾)		
LNAV/VNAV DA	531/55 522 (600-1)		
LNAV MDA	600/40 591 (600-¾)		600-1¼ 591 (600-1¼)

