

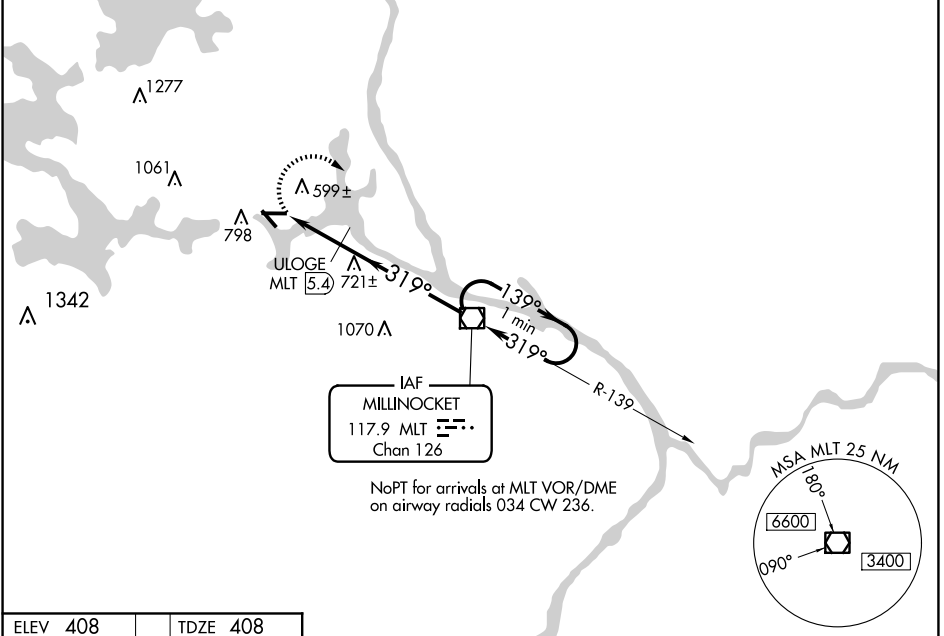
| | | | |
|-----------------|-------------|----------|-------------|
| VOR/DME MLT | APP CRS | Rwy Idg | 4713 |
| 117.9 | 319° | TDZE | 408 |
| Chan 126 | | Apt Elev | 408 |

VOR RWY 29
MILLINOCKET MUNI (MLT)

▼ Helicopter visibility reduction below 1 SM NA. When local altimeter setting not received, use Houlton altimeter setting and increase all MDA 120 feet, increase S-29 and Circling Cat A/B visibility ¼ SM, Cat C visibility ½ SM; increase S-29 Cat D visibility ½ SM; ULOGE fix minimums: increase S-29 Cat C/D and Circling Cat A/B visibility ¼ SM, and Circling Cat C visibility ½ SM. Procedure NA at night.

MISSED APPROACH: Climbing right turn to 3000 direct MLT VOR/DME and hold, continue climb-in-hold to 3000.

| | | |
|------------------------|--------------------------------------|--|
| ASOS 135.225 | BOSTON CENTER 120.25 346.4 | UNICOM 122.8 (CTAF) 📞 |
|------------------------|--------------------------------------|--|

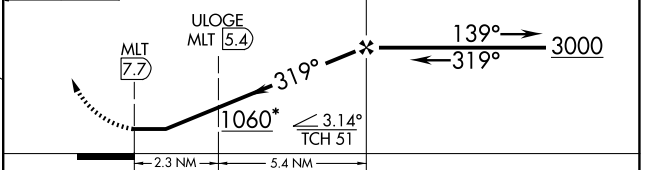
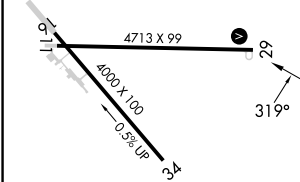


NoPT for arrivals at MLT VOR/DME on airway radials 034 CW 236.

NE-1, 17 APR 2025 to 15 MAY 2025

NE-1, 17 APR 2025 to 15 MAY 2025

| | |
|-----------------|-----------------|
| ELEV 408 | TDZE 408 |
|-----------------|-----------------|



| CATEGORY | A | B | C | D |
|--------------------|--------|-------------|-------------------------|------------------------|
| S-29 | 1060-1 | 652 (700-1) | 1060-1¾ 652 (700-1¾) | 1060-2 652 (700-2) |
| CIRCLING | 1100-1 | 692 (700-1) | 1100-2 692 (700-2) | 1380-3 972 (1000-3) |
| ULOGE FIX MINIMUMS | | | | |
| S-29 | 880-1 | 472 (500-1) | 880-1¼ 472 (500-1¼) | 880-1½ 472 (500-1½) |
| CIRCLING | 1100-1 | 692 (700-1) | 1100-2 692 (700-2) | 1380-3 972 (1000-3) |

REIL Rwy 29 **📞**
MIRL Rwy 11-29 **📞**

| | | | | | |
|-------------------|------|------|------|------|------|
| FAF to MAP 7.7 NM | | | | | |
| Knots | 60 | 90 | 120 | 150 | 180 |
| Min:Sec | 7:42 | 5:08 | 3:51 | 3:05 | 2:34 |