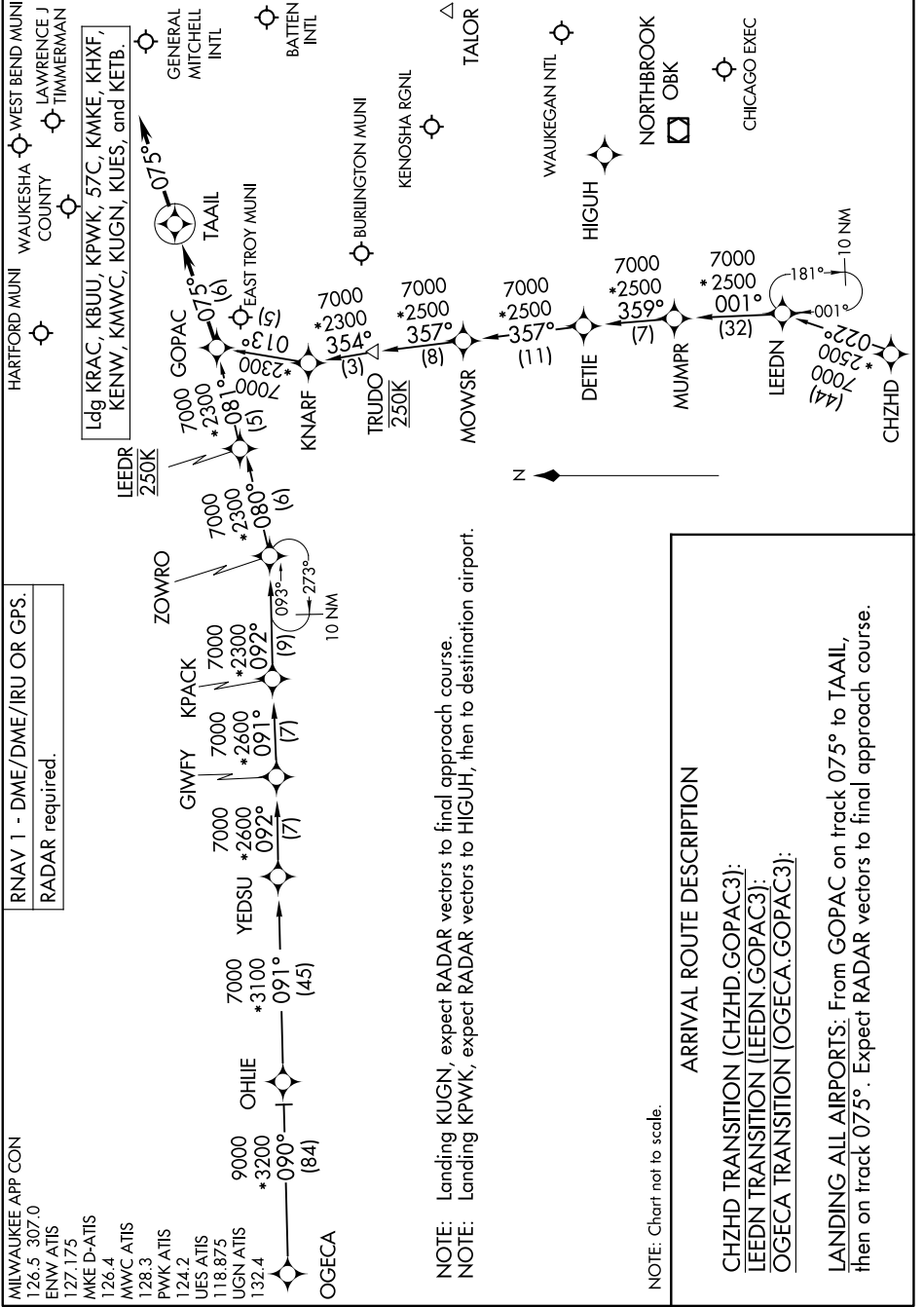


# GOPAC THREE ARRIVAL(RNAV)

AL-262 (FAA)

MILWAUKEE, WISCONSIN

EC-3, 17 APR 2025 to 15 MAY 2025



# GOPAC THREE ARRIVAL(RNAV)

MILWAUKEE, WISCONSIN

EC-3, 17 APR 2025 to 15 MAY 2025

MILWAUKEE APP CON  
126.5 307.0  
ENW ATIS  
127.175  
MKE D-ATIS  
126.4  
MWC ATIS  
128.3  
PWK ATIS  
124.2  
UES ATIS  
118.875  
UGN ATIS  
132.4

RNAV 1 - DME/DME/IRU OR GPS.  
RADAR required.

**ARRIVAL ROUTE DESCRIPTION**

CHZHD TRANSITION (CHZHD.GOPAC3):  
LEEDN TRANSITION (LEEDN.GOPAC3):  
OGECA TRANSITION (OGECA.GOPAC3):

LANDING ALL AIRPORTS: From GOPAC on track 075° to TAAIL, then on track 075°. Expect RADAR vectors to final approach course.

NOTE: Chart not to scale.

NOTE: Landing KUGN, expect RADAR vectors to final approach course.  
NOTE: Landing KPWK, expect RADAR vectors to destination airport.