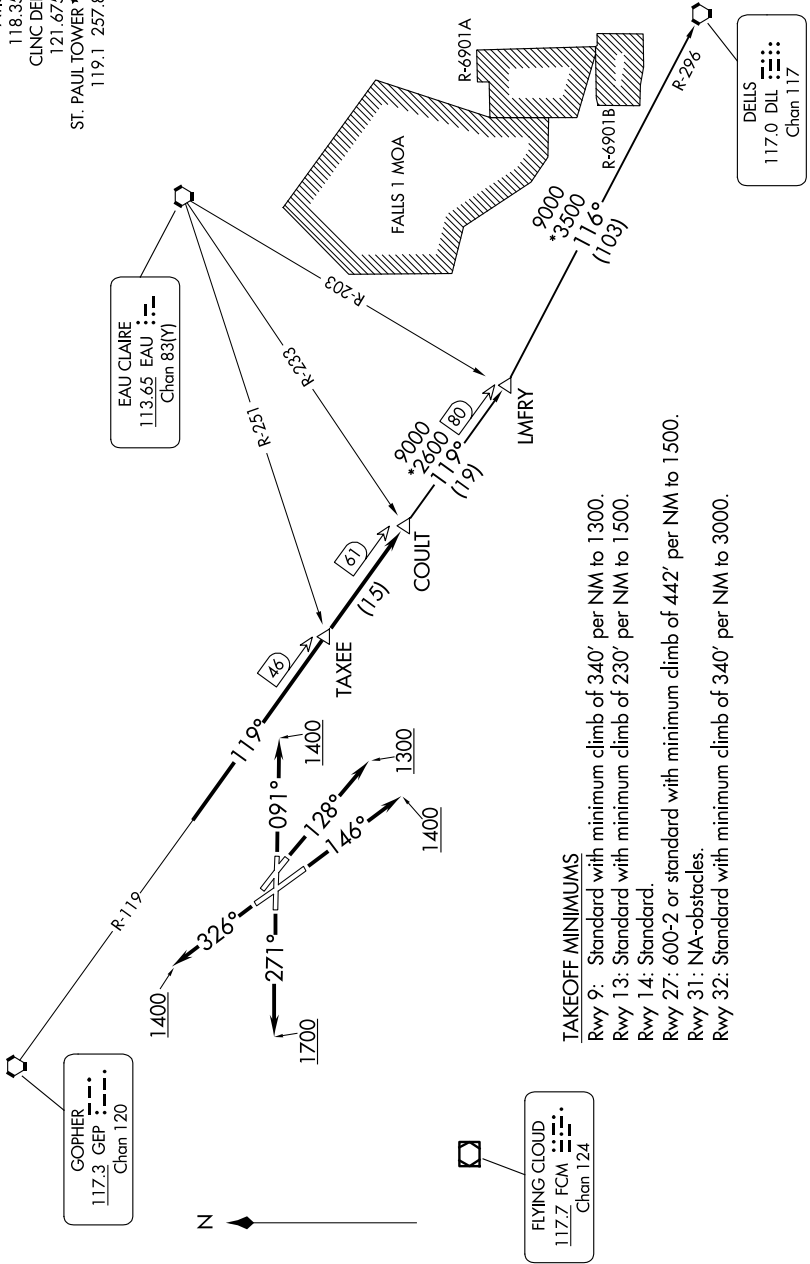


COULT SEVEN DEPARTURE

NC-1, 17 APR 2025 to 15 MAY 2025

MINNEAPOLIS DEP CON
 121.2 335.65
 ATIS
 118.35
 CLNC DEL
 121.675
 ST. PAUL TOWER *
 119.1 257.8



TAKEOFF MINIMUMS
 Rwy 9: Standard with minimum climb of 340' per NM to 1300.
 Rwy 13: Standard with minimum climb of 230' per NM to 1500.
 Rwy 14: Standard.
 Rwy 27: 600-2 or standard with minimum climb of 442' per NM to 1500.
 Rwy 31: NA-obstacles.
 Rwy 32: Standard with minimum climb of 340' per NM to 3000.

NOTE: RADAR required.
 NOTE: Chart not to scale.

(CONTINUED ON FOLLOWING PAGE)

NC-1, 17 APR 2025 to 15 MAY 2025

COULT SEVEN DEPARTURE