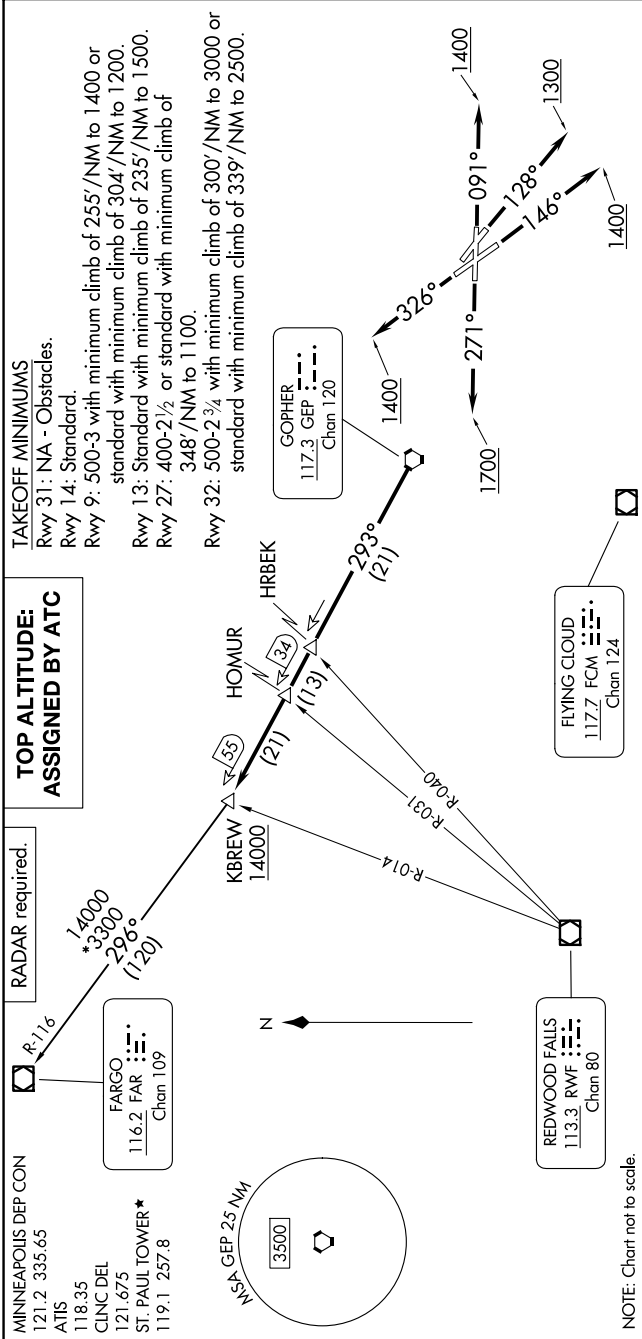


NC-1, 17 APR 2025 to 15 MAY 2025



**TOP ALTITUDE:
ASSIGNED BY ATC**

TAKEOFF MINIMUMS
 Rwy 31: NA - Obstacles.
 Rwy 14: Standard.
 Rwy 9: 500-3 with minimum climb of 255'/NM to 1400 or standard with minimum climb of 304'/NM to 1200.
 Rwy 13: Standard with minimum climb of 235'/NM to 1500.
 Rwy 27: 400-2½ or standard with minimum climb of 348'/NM to 1100.
 Rwy 32: 500-2¾ with minimum climb of 300'/NM to 3000 or standard with minimum climb of 339'/NM to 2500.

MINNEAPOLIS DEP CON
 121.2 335.65
 ATIS 118.35
 CLNC DEL 121.675
 ST. PAUL TOWER* 119.1 257.8

RADAR required.
 R-116
 *14000
 *13000
 *2900
 (120)

FARGO
 116.2 FAR
 Chan 109

REDWOOD FALLS
 113.3 RW
 Chan 80

FLYING CLOUD
 117.7 FCM
 Chan 124

**TOP ALTITUDE:
ASSIGNED BY ATC**

TAKEOFF MINIMUMS
 Rwy 31: NA - Obstacles.
 Rwy 14: Standard.
 Rwy 9: 500-3 with minimum climb of 255'/NM to 1400 or standard with minimum climb of 304'/NM to 1200.
 Rwy 13: Standard with minimum climb of 235'/NM to 1500.
 Rwy 27: 400-2½ or standard with minimum climb of 348'/NM to 1100.
 Rwy 32: 500-2¾ with minimum climb of 300'/NM to 3000 or standard with minimum climb of 339'/NM to 2500.

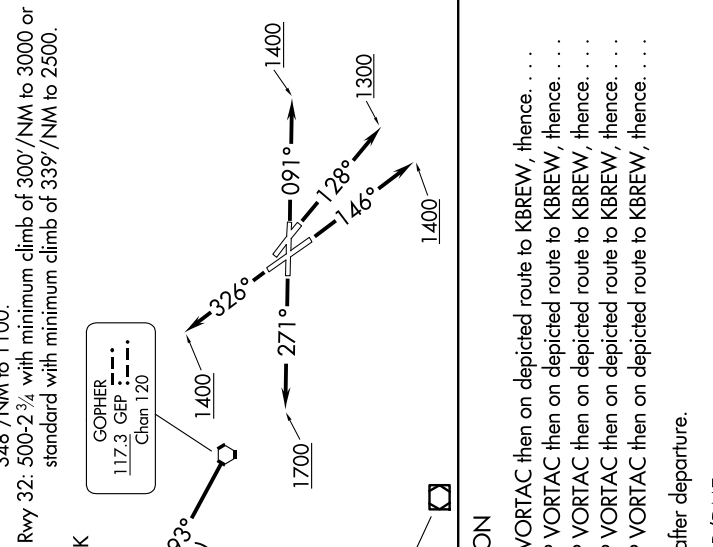
MINNEAPOLIS DEP CON
 121.2 335.65
 ATIS 118.35
 CLNC DEL 121.675
 ST. PAUL TOWER* 119.1 257.8

RADAR required.
 R-116
 *14000
 *13000
 *2900
 (120)

FARGO
 116.2 FAR
 Chan 109

REDWOOD FALLS
 113.3 RW
 Chan 80

FLYING CLOUD
 117.7 FCM
 Chan 124



MINNEAPOLIS DEP CON
 121.2 335.65
 ATIS 118.35
 CLNC DEL 121.675
 ST. PAUL TOWER* 119.1 257.8

RADAR required.
 R-116
 *14000
 *13000
 *2900
 (120)

FARGO
 116.2 FAR
 Chan 109

REDWOOD FALLS
 113.3 RW
 Chan 80

FLYING CLOUD
 117.7 FCM
 Chan 124

DEPARTURE ROUTE DESCRIPTION

TAKEOFF RUNWAY 9: Climb on heading 091° to 1400 for RADAR vectors to GEP VORTAC then on depicted route to KBREW, thence. . . .

TAKEOFF RUNWAY 13: Climb on heading 128° to 1300 for RADAR vectors to GEP VORTAC then on depicted route to KBREW, thence. . . .

TAKEOFF RUNWAY 14: Climb on heading 146° to 1400 for RADAR vectors to GEP VORTAC then on depicted route to KBREW, thence. . . .

TAKEOFF RUNWAY 27: Climb on heading 271° to 1700 for RADAR vectors to GEP VORTAC then on depicted route to KBREW, thence. . . .

TAKEOFF RUNWAY 32: Climb on heading 326° to 1400 for RADAR vectors to GEP VORTAC then on depicted route to KBREW, thence. . . .

. . . on transition. Maintain ATC assigned altitude. Expect filed altitude 10 minutes after departure.

FARGO TRANSITION (KBREW2.FAR): From over KBREW on FAR R-116 to FAR VOR/DME.

NC-1, 17 APR 2025 to 15 MAY 2025