

(ORSKY3.ORSKY) 23334
ORSKY THREE DEPARTURE

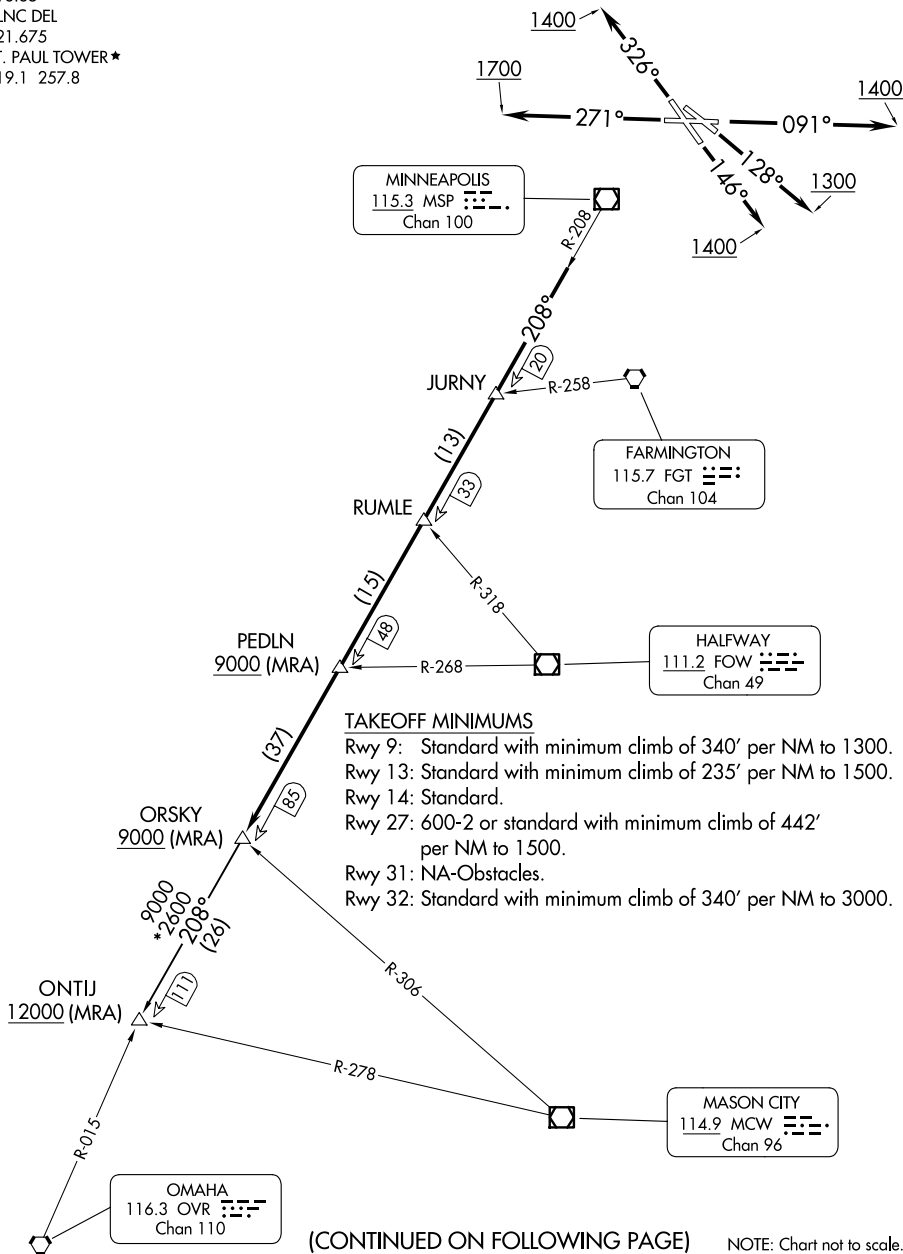
AL-263 (FAA)

ST PAUL DOWNTOWN HOLMAN FLD (STP)
 ST PAUL, MINNESOTA

MINNEAPOLIS DEP CON
 121.2 335.65
 ATIS
 118.35
 CLNC DEL
 121.675
 ST. PAUL TOWER★
 119.1 257.8

RADAR required.

**TOP ALTITUDE:
 ASSIGNED BY ATC**



TAKEOFF MINIMUMS

- Rwy 9: Standard with minimum climb of 340' per NM to 1300.
- Rwy 13: Standard with minimum climb of 235' per NM to 1500.
- Rwy 14: Standard.
- Rwy 27: 600-2 or standard with minimum climb of 442' per NM to 1500.
- Rwy 31: NA-Obstacles.
- Rwy 32: Standard with minimum climb of 340' per NM to 3000.

(CONTINUED ON FOLLOWING PAGE)

NOTE: Chart not to scale.

(ORSKY3.ORSKY) 08SEP22
ORSKY THREE DEPARTURE

ST PAUL, MINNESOTA
 ST PAUL DOWNTOWN HOLMAN FLD (STP)

NC-1, 17 APR 2025 to 15 MAY 2025

NC-1, 17 APR 2025 to 15 MAY 2025