

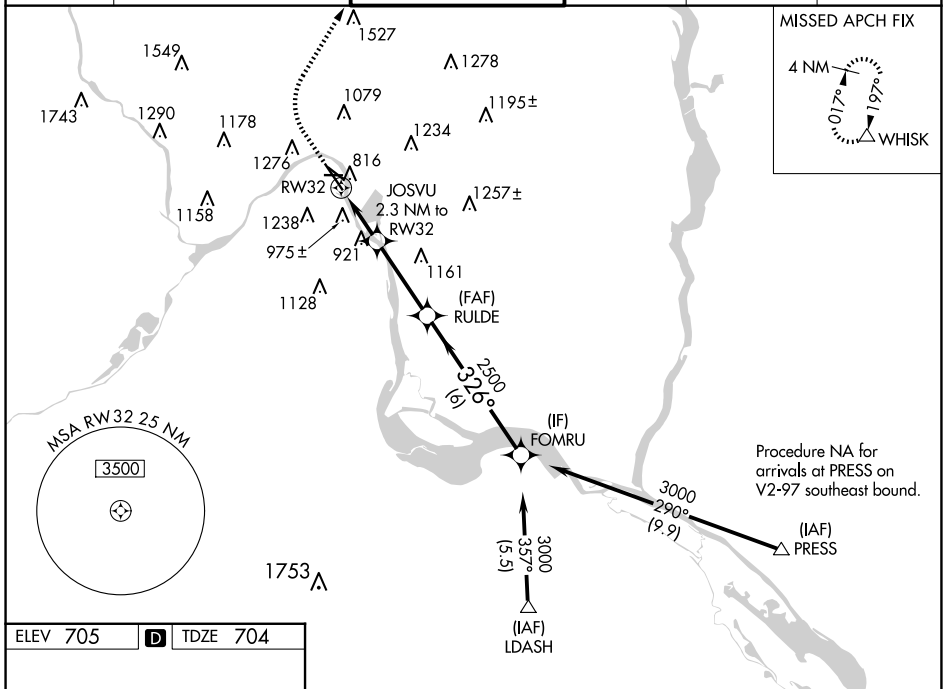
WAAS CH 50123 W32A	APP CRS 326°	Rwy Idg TDZE Apt Elev	6109 704 705
--	------------------------	-----------------------------	---

RNAV (GPS) RWY 32

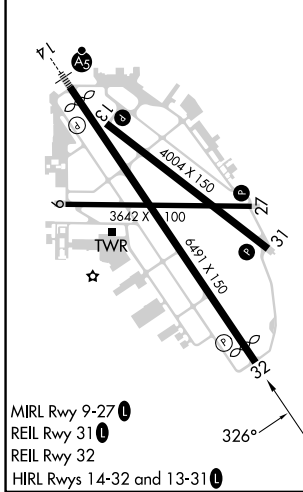
ST PAUL DOWNTOWN HOLMAN FLD (STP)

RNP APCH - GPS.		<p>▼ Rwy 32 helicopter visibility reduction below $\frac{3}{4}$ SM NA. ▲ For uncompensated Baro-VNAV systems, LNAV/VNAV NA below -30°C ❄️ -30°C below -21°C or above 54°C.</p>		<p>MISSED APPROACH: Climb to 1400 then climbing right turn to 3000 direct WHISK and hold.</p>	
-----------------	--	---	--	---	--

ATIS 118.35	MINNEAPOLIS APP CON 121.2 335.65	ST. PAUL TOWER ★ 119.1(CTAF) 257.8	GND CON 121.675	CLNC DEL 121.675	UNICOM 122.95
-----------------------	--	--	---------------------------	----------------------------	-------------------------



ELEV 705	D	TDZE 704
----------	----------	----------



1400	3000	WHISK			
			JOSVU 2.3 NM to RW32	RULDE 2500	FOMRU 3000
			1.6 NM to RW32	1460	326°
			1.6 NM	0.7 NM	3.2 NM
					6 NM
					GP 3.00° TCH 40
CATEGORY	A	B	C	D	
LPV DA		1031/50	327 (400-1)		
LNAV/VNAV DA		1258-1 $\frac{5}{8}$	554 (600-1 $\frac{5}{8}$)		
LNAV MDA	1240/55	536 (600-1)	1240-1 $\frac{1}{2}$	536 (600-1 $\frac{1}{2}$)	
CIRCLING	1580-1 $\frac{1}{4}$	875 (900-1 $\frac{1}{4}$)	1580-2 $\frac{1}{2}$	875 (900-2 $\frac{1}{2}$)	1580-2 $\frac{3}{4}$ 875 (900-2 $\frac{3}{4}$)

NC-1, 17 APR 2025 to 15 MAY 2025

NC-1, 17 APR 2025 to 15 MAY 2025