

(ZMBRO7.ZMBRO) 23334

ZMBRO SEVEN DEPARTURE

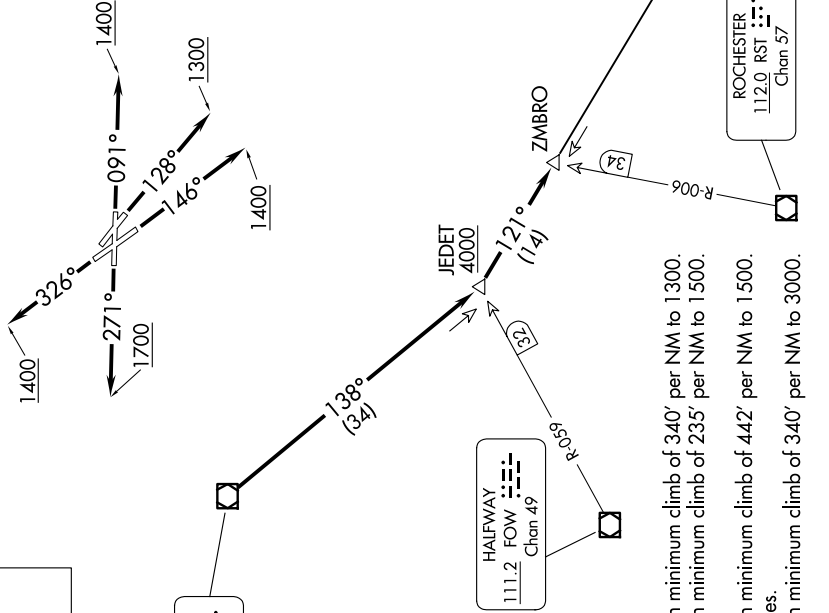
AL-263 (FAA)

ST PAUL DOWNTOWN HOLMAN FLD (STP)

ST. PAUL, MINNESOTA

NC-1, 17 APR 2025 to 15 MAY 2025

MINNEAPOLIS DEP CON
121.2 284.7
ATIS
118.35
CLNC DEL
121.675
ST. PAUL TOWER ★
119.1 257.8



TOP ALTITUDE:
(JETS) 7000/
(PROPS) 5000

MINNEAPOLIS
115.3 MSP
Chan 100

HALFWAY
111.2 FOW
Chan 49

TAKEOFF MINIMUMS
Rwy 9: Standard with minimum climb of 340' per NM to 1300.
Rwy 13: Standard with minimum climb of 235' per NM to 1500.
Rwy 14: Standard.
Rwy 27: Standard with minimum climb of 442' per NM to 1500.
Rwy 31: NA - Obstacles.
Rwy 32: Standard with minimum climb of 340' per NM to 3000.

NODINE
117.9 ODI
Chan 126

ROCHESTER
112.0 RST
Chan 57

NOTE: RADAR required.
NOTE: Chart not to scale.

(CONTINUED ON FOLLOWING PAGE)

NC-1, 17 APR 2025 to 15 MAY 2025

ZMBRO SEVEN DEPARTURE
(ZMBRO7.ZMBRO) 17AUG17

ST. PAUL, MINNESOTA
ST PAUL DOWNTOWN HOLMAN FLD (STP)