


LOC/DME I-RUJ <b>108.5</b> Chan 22	APP CRS <b>320°</b>	Rwy Idg <b>9618</b> TDZE <b>25</b> Apt Elev <b>26</b>
--	------------------------	---

# ILS or LOC RWY 32

MOBILE INTL (BFM)

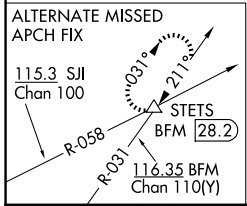
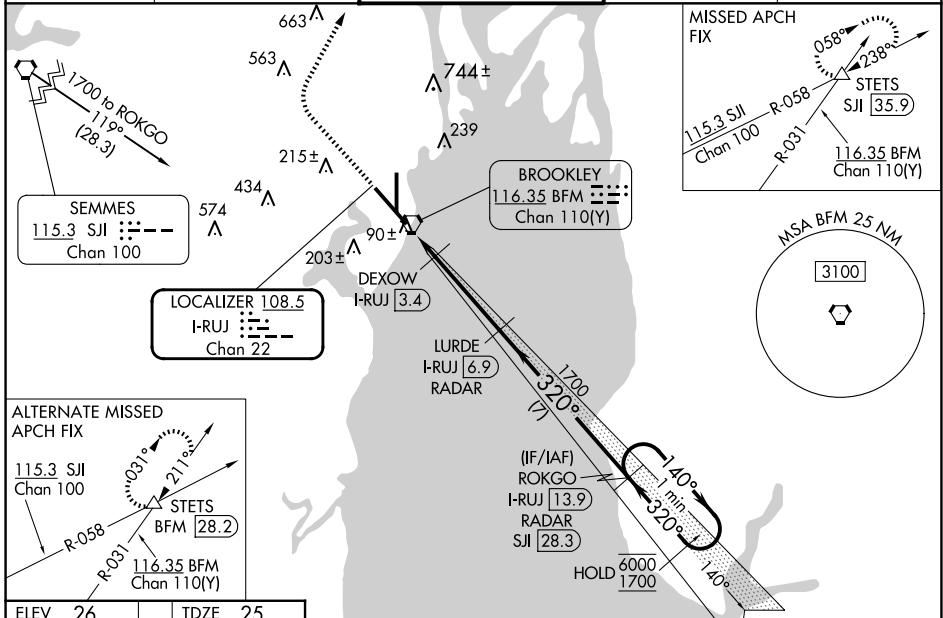
DME or RADAR required.

**⚠** For inop ALS, increase S-LOC 32 Cat C/D visibility to 1¾ and DEXOW S-LOC 32 Cat C/D visibility to RVR 4500.

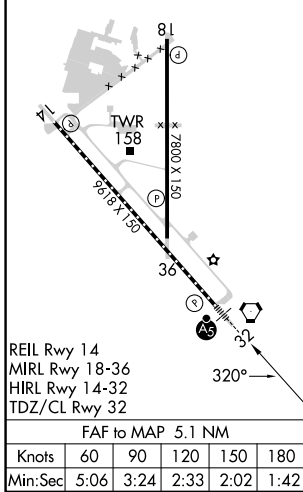
MALSRS 

MISSED APPROACH: Climb to 800 then climbing right turn to 2000 on heading 030° and on SJJ R-058 to STETS INT/SJJ 35.9 DME and hold.

ATIS <b>135.575</b>	MOBILE APP CON ★ <b>118.5 269.3</b>	INTERNATIONAL TOWER ★ <b>118.8 (CTAF) 251.1</b>	GND CON <b>121.7 239.3</b>	UNICOM <b>122.95</b>
------------------------	--	--	-------------------------------	-------------------------



ELEV 26	TDZE 25
---------	---------



800	2000	SJJ R-058	STETS	VGSI and ILS glidepath not coincident (VGSI Angle 3.00/TCH 71).	LURDE I-RUJ 6.9 RADAR	ROKGO I-RUJ 13.9 RADAR	One Minute Holding Pattern
hdg 030°					DEXOW I-RUJ 3.4	1700	
					I-RUJ 1.8	I-RUJ 2.6	
					580	1700	
					0.9 NM	0.8 NM	3.5 NM
							7 NM
							140° → 6000
							← 320° 1700
							GS 3.00° TCH 55
CATEGORY	A	B	C	D			
S-ILS 32		225/18	200 (200-½)				
S-LOC 32	580/24	555 (600-½)	580/60	555 (600-1¼)			
CIRCLING	680-1	654 (700-1)	680-1¾ 654 (700-1¾)	1100-3 1074 (1100-3)			
DEXOW FIX MINIMUMS							
S-LOC 32		340/24	315 (400-½)				
CIRCLING	680-1	654 (700-1)	680-1¾ 654 (700-1¾)	1100-3 1074 (1100-3)			

SE-4, 17 APR 2025 to 15 MAY 2025

SE-4, 17 APR 2025 to 15 MAY 2025